



MAK03026 - PORTABLE EDGE BANDER

INSTRUCTION MANUAL



ATTENTION: READ THIS MANUAL BEFORE USING YOUR MACHINE.

INSTRUCTION MANUAL

Important information you should know:

- The images in this manual are illustrative and are meant to demonstrate the correct operation of your product, there may be small changes in relation to the images.

On-Line Support: On our YouTube Channel you will find several videos that will help you with MAKSIWA' s machines. Use the QR CODE.



READ ALL INSTRUCTIONS

CAUTION:

WHEN PERFORMING MAINTENANCE/REPAIRING, REPLACE ONLY WITH IDENTICAL/OEM PARTS. Repair or replace any damaged wiring.

GROUNDING INSTRUCTIONS

• THIS EDGEBANDER MUST BE CONNECTED TO A GROUNDED WIRE or to a system with an equipment-grounding conductor. In the event of a malfunction, a ground provides a path of least resistance for electrical current to reduce the risk of electric shock. This edgebander is equipped with an electrical cord with grounding conductor and a grounding plug. The plug must be connected into a matching outlet provided - if it will not fit the outlet; have the proper outlet installed by a qualified electrician. Improper connection of the equipment-grounding conductor can result in a risk of electrical shock and/or malfunction. If repair or replacement of the electrical cord or plug is necessary, unplug your machine. Check with qualified electrician or service personnel if the grounding instructions are not completely understood or if in doubt as to whether the edgebander is properly grounded. Use only 3-wire extension cords that have a ground and 3-pole receptacles that accept the edgebander' s plug.

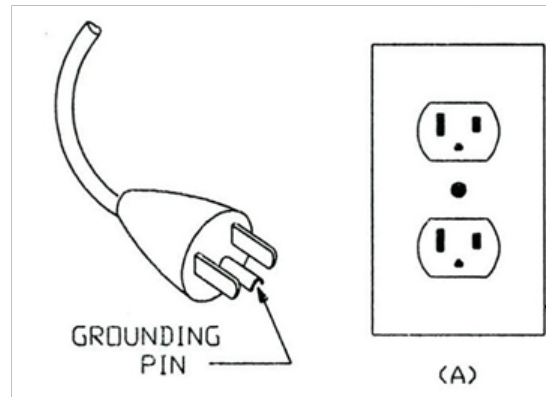
• REPAIR OR REPLACE A DAMAGE OR WORN CORD IMMEDIATELY. When servicing use only identical/OEM replacement parts.

• USE PROPER EXTENSION CORD. Make sure your extension cord is in good condition. When using an extension cord, be sure the appropriate gauge that can carry the current your edgebander will draw.

An undersized cord will cause a drop in line voltage resulting in loss of power and overheating. For cord length of up to 50 feet, use a 14-gauge extension cord. An Extension cord over 50 feet is not recommended.

- This edgebander is intended for use on a circuit that has an outlet similar to the one illustrated in Sketch (A).

The edgebander has a grounding plug similar to the plug illustrated in Sketch (A). Make sure the edgebander is connected to an outlet having the same configuration as the plug. No adapter is available or should be used with this edgebander. If the machine must be rewired for use on a different type of electric circuit, the rewiring should be made by qualified service personnel; and after reconnection, the edgebander should comply with all local codes and ordinances.



SAFETY INSTRUCTIONS FOR ALL EQUIPMENTS

WARNINGS

- Keep a clean work surface. Cluttered areas and work surfaces can cause accidents.
- Do not use the Edgebander in hazardous environments. Do not use machine in damp or wet locations. Keep a well-lit work area.
- Keep children away and unauthorized personnel should be kept safe distance from work area.
- Make the workplace safe making use of padlocks, master keys or removing the ignition key.
- Do not force tool. It will perform the job better and safer if used as intended.

- Use appropriate safety equipment. Do not wear loose fitting clothing, gloves, chains, rings, bracelets or other accessories that could become caught in moving parts. Regulations require employers to ensure that workers cover and protect long hair to prevent it from getting caught in machine parts such as belts and chains.

- It is recommended to wear safety shoes with non-slip soles, this can help prevent injuries by protecting workers from hazards such as falling or rolling objects, sharp objects, wet and slippery surfaces, molten metals, hot surfaces, and electrical hazards.

- Always wear safety glasses. Also use hearing protection.

- Do not overreach on the equipment. Maintain balance and feet in comfortable position at all times.

- Keep all tools in order. Keep tools sharp and clean for better and safer performance. Follow the instructions for lubricating and changing accessories.

- Unplug the machine before servicing or changing accessories such as blades, components etc..

- Reduce the risk of unintentional starting. Ensure that the Main power switch is in the "OFF" position before plugging in the machine.

- Use recommended accessories. See the instruction manual to check recommended accessories. Improper use of accessories may cause risk of injury to persons.

- Never step on the machine. serious accident may occur if the machine is dropped or if internal components are damaged.

- Check for damaged parts, before continuing to use the Edgebander. If a guard or any other part is damaged, it should be examined carefully to determine its proper operation and performance has been affected. Check alignment in moving parts, broken parts, mounting and any other condition that may affect its operation. Any part that is damaged should be repaired or replaced immediately. Do not use the tool if the Main power switch does not turn on or off.

- Never leave a running tool unattended. Turn off the machine at the Main power switch.

- The motor of this machine can emit sparks, and ignite flammable gases.

- Make sure your extension cord is in good condition. When using an extension, make sure it is capable of carrying the electrical current required by your product. An undersized cord will cause drops in voltage resulting in loss of power and overheating. The following table shows the correct size to be used depending on the cable diameter and amperage rate. If in doubt, use a cable with a higher level of capacity. **IMPORTANT:** Do not use an extension cord with length above 50 feet

Cable 2 wires		Cable 3 wires	
Ø (mm ²)	Amperage	Ø (mm ²)	Amperage
0,5	9	0,5	8
1,0	13	1,0	12
1,5	16,5	1,5	15
2,5	23	2,5	20

Additional safety rules for the Edgebander:

CAUTION: FAILURE TO OBSERVE THESE WARNINGS MAY RESULT IN PERSONAL INJURY AND SERIOUS DAMAGE TO THE MACHINE.



ALWAYS USE PROPER PROTECTIVE EQUIPMENTS TO OPERATE THIS MACHINE.

- Always use safety glasses. Everyday eyeglasses only have impact resistant lenses, they are NOT safety glasses.

- Keep guards in place and working order.

- Protect the electric power supply line with at least a 20-amp fuse or a circuit breaker switch.

- Make sure that the motor is turning in the right direction.

- Make sure that all knobs and screws are properly tightened before starting any operation.

- Keep blades sharp.

- Keep vents free of dust.

- Keep hands away from moving or sharp parts.

- Turn off the machine and unplug the power cord before performing maintenance or adjustments to the tool.

- Support long pieces with a clamping device for wood or table extensions.

- Do not attempt to operate the machine in another voltage beyond for which it was designed.
- Do not use larger or smaller tools than recommended.
- Do not apply lubricant to the tools during use.
- Do not operate if safety guard are missing.
- Glue shaft is hot and can cause burns. Keep hands at a safe distance.
- Do not put your hands in enclosed area of the machine unless it is turned off and unplugged.
- Do not use lubricants or cleaners (sprays and aerosols) in the vicinity of the plastic guard. The polycarbonate material used in the guard is sensitive to certain chemicals.

WARNING: Some dust created by the act of sanding, cutting, grinding, drilling and other construction-related activities contains chemicals that can cause cancer, birth defects or other reproductive harm. Some examples of these products are: Lead-based paint; crystal silica bricks, concrete and other masonry products; and arsenic and chromium from chemically treated wood.

CAUTION: Do not connect the unit to the power outlet until all instructions have been read and understood. Always tighten the adjustment tabs before using the machine. Think: "I can prevent accidents".

Do not operate the machine unless the guards are in their proper places. Always use protective goggles.

Electrical connection

The MAK03026 requires 110V 10A power supply. To avoid a burn risk, check the voltage of your outlet before starting the machine. If necessary, make the changes to your supply power with the help of an Electrician. Ensure that your power supply is in accordance with machine requirements. A 10% decrease in voltage or more will cause loss of power and overheating. All equipment MAKSIWA are tested at the factory. If this machine does not work, check the electrical supply. Check the compatibility of your outlet and the machines plug. Do not do patch or make adaptations to the plug. To avoid electrical shock and damage to the equipment always ground the machine.

Familiarization

Put the machine on a smooth and flat surface. Check the pictures and read the descriptions to familiarize yourself with its components. The next section will deal with the necessary adjustments for the proper functioning of the machine.

You should know these parts and their locations.

Especifications

Glue Type: Low Temperature Granulated Hot-Melt
 Power: 1.300 W
 Tape Thickness: 0.3 - 2 mm
 Max. Tape Width: 80 mm (3")
 Min. Workpiece Length: 120 mm (4 3/4")
 Feeder Speed: 5.5 m/min (18 ft/min)
 Glue Temperature: 130°C to 180°C (266°F to 356°F)
 Voltage: 110V 10A
 Net Weight: 52 Kg (115 pounds)

Transport and Installation

This equipment must be carried by at least two people, holding by the handles located on the sides of the box. For packaging purposes, the machine is not fully assembled. If you notice any damage caused by transportation, while you open the package, notify your supplier immediately. Do not operate the machine.



Dispose the packaging in a friendly way with the environment.

The Edgebander is designed to operate indoors and should be placed on a firm, stable and level surface.

CAUTION: To prevent the machine from moving and tipping over, ensure that the base place in a stable place.

UNPACKING AND ASSEMBLY

Due to modern mass production techniques, it is unlikely that the MAK03026 Edgebender is faulty or is missing part. If you find anything wrong, do not use the machine until the parts are replaced or the fault is corrected. By doing this you are avoiding serious injury.

Step 01: Open box and tip on to its back.

Step 02: Slide machine out using plastic wrap and remove inner plastic wrap.

Step 03: Flip legs down and install cross bars - Note the tapered ends of the crossbars.

Step 04: Add leveling feet.

Step 05: Lift machine onto feet, install the plate extension arm on rear corner.

Step 06: Plug machine in to test power.





NOTE: The brand and quality of the glue is fundamental. MAKSIWA recommends glues that work in the range of 130°C to 180°C. Do Not use high temperature glues as these can damage the machine.

CHANGING GLUES: If you change the color of your tape or the color of the wood panel, you may want to change the glue in your Edgebander. To change the glue, follow these steps, but first read the rest of this manual to be familiar with all operations:

- Turn on the machine and set the temperature controller to 70°C (158°F) (see this manual to program the controller).
- At this temperature, the glue is not too hot (soft) or too cold (hard). This will allow you to remove the chunks of glue without much difficulty.
- Use a trowel or piece of wood to scrape out the glue, avoiding using sharp tool that can scratch the wall of the glue pot.
- After removing all the glue in the pot, refill with the desired color glue.
- Set the temperature controller according to the specification of the glue Manufacturer.

GLUE RECOMMENDATION: With this machine we recommend using low temperature granulated Hot Melt glue.

The following glue brands are suggested but are not require to use. Make sure that you use glues within the working Temperature range of 130°C to 180°C:

- Jowat White color (ref. 282.21)
- Jowat Natural color (ref. 282.20)
- Kleiberit Ivory color (ref. 788.3/20)
- Kleiberit White color (ref.788.3/10)

2. Edgebanding Tape

MAKSIWA's Edgebander is designed to work with PVC tape, ABS, paper and wood that are not pre-glued, only straight panels. Use tapes approximately 4mm wider than the wood panel. It is necessary to adjust the MAK03026 infeed fence according to the thickness of the tape. That is, when changing the thickness of the tape, you need to adjust again when changing the thickness of tape. To Adjust, follow these steps:

- Cut a piece of tape
- Loosen (without removing) the two hex screws shown in the following figure, using a 13mm wrench
- Insert a piece of edgebanding tape behind aluminum infeed fence, between the fence and the Allen screws, as shown in figure above.
- Pin the tape between the fence and Allen bolts, without bending the tape.

WARNING: Plug the machine into a 110V 20A outlet. If an extension cord is needed, utilize a 3-wire 12-Gauge cord.

ADJUSTMENTS

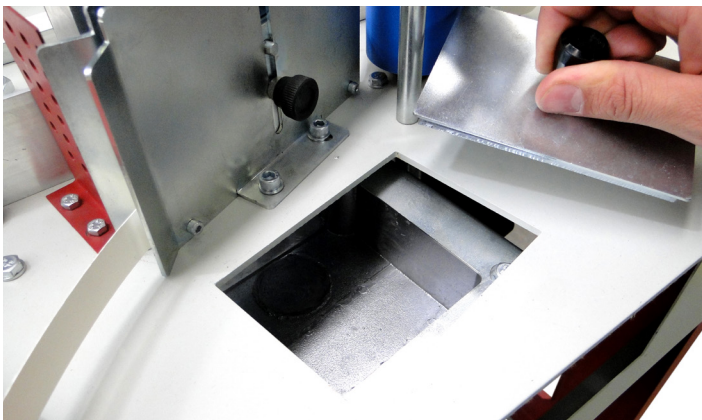
ADJUSTMENTS

The following section shows adjustments that must be made before using your Edgebander for the first time or when changing is the thickness tape or wood panel height.

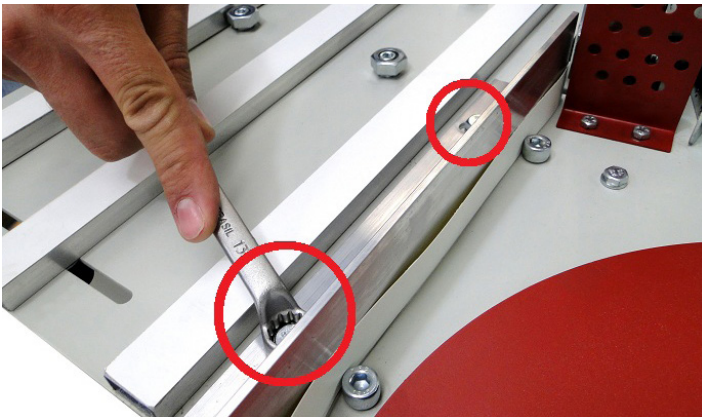
CAUTION: ANY ADJUSTMENT NEEDS TO BE MADE WITH THE MACHINE OFF AND DE-ENERGIZED (unplugged).

1. GLUE

The glue that should be used in your MAK03026 is a low temperature granulated Hot Melt glue. Always check the amount of glue on your machine before each job. Due to test performed at the factory, your MAK03026 ships with glue in the pot.



If necessary, add glue to match the color of wood panel and edgebanding tape you are using. Do not put too much glue at one time, as the glue melts in the pot, it may overflow. Keep in mind that if the glue level drops too much, you have issue with adhesions to your panel. Check level before every new job.



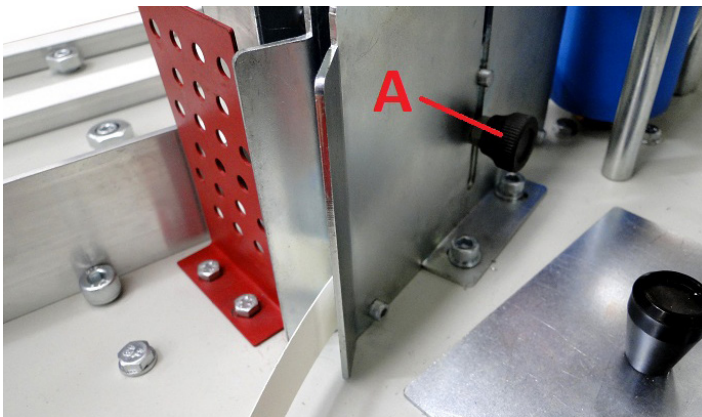
- Leave the tape in place and tighten the hex screws. The distance of the fence will be adjusted according to the thickness of the tape.

- With a piece of wood, make sure the fence is aligned with the glue axis. To verify this, push the panel against the aluminum fence and slide to make contact the glue Roller. The glue roller must move slightly back about 0.5 to 1 mm. During operating, pass the panel should touch lightly on the roller, passing the glue onto the panel.

TAPE PLACEMENT: To place your tape correctly, follow these steps:

- Place the roll of Edgbanding on the tape support plate previously installed

- Insert the tape into the tape guide as shown in the figure below. Adjust knob (A) so that the top guide only stops the tape from riding up on as it exits the tape guide, without pin it. Make sure the tape slides freely through the tape guide.



- Slide the tape to the point where the Panel touches the tape Infront of the blue roller.

- Your tape is now in the start position.

OPERATIONS

Normal operation of your Edgbander, as well as any other machine, can pose risks to the operator if the instructions in this section are not taken into account.

These instructions are written with the understanding that the operator has the knowledge and skills necessary to operate this machine. If at any time you have difficulty performing any operation, stop using the machine. If you are an inexperienced operator, we recommend that you read books, technical papers, or seeks training from an experienced operator before performing any unknown task. The machine must operate with all the protections and security systems that comes standard.

Above all, your safety must come first.

1. STARTING AND CONTROL

To turn on your MAK03026 proceed as follows:

- Connect the previously installed outlet at 110V supply.

- On the control panel you will find different commands. Get to know each of them and their functions:



1. Main Power Switch (1): This Switch energizes the machine's control panel, without turning on the function.

2. Emergency Button (2): When triggered, instantly shuts down all machine controls. To release it, just rotate clockwise.

3. On Button (3): When pressed, the machine activates other commands and starts the process of heating the glue. If the machine does not turn on and Temperature controller does not light up, make sure the main switch has been turned on and the emergency button is not triggered.

4. Off Button (4) (red): This button turns off the machine by turning off all the functions, including heating the glue.

5. Feeder Switch (5): This button activates the feeding system (rubber and glue axis). But this button will only be active after the glue reaches the set temperature.

6. Temperature controller (6): It has two set of numbers - the upper one indicates the actual temperature of the glue (red numbers) and the lower one shows the set temperature (green in numbers) - and the following keys: SET - LEFT ARROW - DOWN ARROW - UP ARROW.

Follow the instructions below to change the set temperature on the controller.

Turn on the power button (3).

Select the temperature according to the specification of the glue. To change the working temperature, press the LEFT ARROW key, until the desired digit is flashing. Then press the DOWN ARROW or UP ARROW keys to change the temperature. At the end, press the SET button, which will save the change.

NOTE: The feeder process is activated only when the temperature is below 10°C or 10°C above the set temperature. Outside this range, the process is disabled.

NOTE: The MAK03026 temperature controller is programmable to a maximum temperature of 220°C (428°F), but MAKSIWA does not recommend working with glues of high temperature because they can melt the tape and cause damage to the internal component of the machine.

- Once connected and you have set the desired temperature, will take some 20 to 30 minutes to reach operational temperature, starting from room temperature.

- Upon reaching the set temperature, the feeder switch (5) is ready to be turned on, activating the roller. Your Edgebander is ready to start the first tests piece. At this point it is important to use test pieces for testing, until you are familiar with all functions of the machine.

FIRST TESTS

Proceed to this point if you read the entire manual and can safely operate the equipment, if necessary, contact the manufacturer. With all adjustments made, the correct temperature is set and the machine has reach working temperature, you can start the first working tests. To do this, use scrap panels that will not be used, to ensure the full confidence operator in the machine.

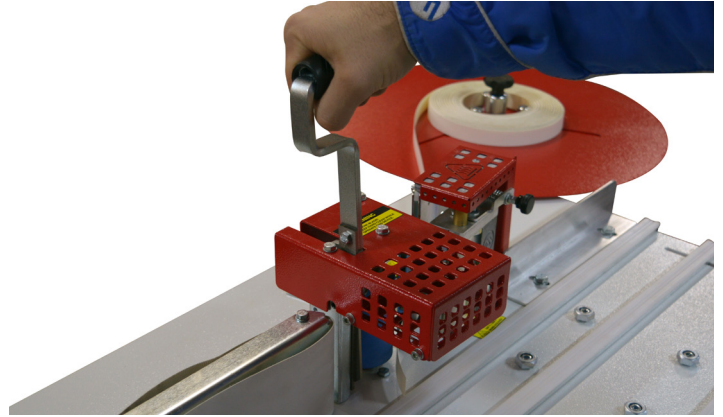
- To start, hold the wood panel pushing against the aluminum fence and slide it towards the Rubber roller. See figure below:



CAUTION: Crushing and cutting risk. Avoid bring your hands within 10cm (4”) manual cutter. Do not wear loose clothing or gloves when operating this equipment.

In case the panel is too long, meaning it over hangs pass the MAK03026, Make sure to support it on both ends.

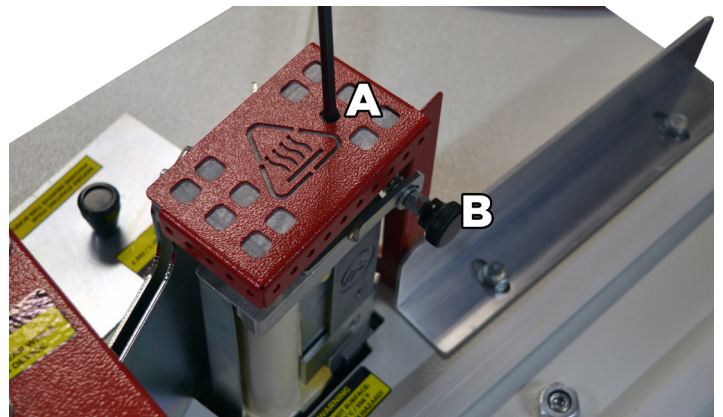
NOTE: You will notice that the edgebander can cut the tape close to the wood panel, allowing a better finish edge.



GLUE THICKNESS

According to the first couple tests you will find an ideal amount of glue that must pass onto the panel. In case you notice that the tape is easily peeled off from the panel, try increasing the amount of glue or there may be an excess of glue, you'll notice an excess on the sides of the tape. To adjust the glue thickness, do the following:

- On the glue axis, locate and loosen the (A) screw on the glue axis, as the following figure:



- If you want to decrease the glue thickness, slightly rotate the (B) knob counter-clockwise. If you want to increase the thickness of glue, turn the (B) knob clockwise. Note that small changes (approximately 1/4 turn) have already cause a considerable change in thickness of the glue. Find the optimum amount, which can vary according to the type and brand tape, Panel material, glue and the temperature. It is normal after the end of the process small quantities of glue are left around the tape. If this happens, remove this glue excess with a cloth with paint thinner, kerosene or even with a blade, being careful not to scratch the Panel or Tape.

MAINTENANCE

IMPORTANT:

All maintenance or cleaning on the machine should be done with the edgebander **OFF** and unplugged from the outlet to prevent accidental shock.

GENERAL

Periodic maintenance on your MAKSIWA Edgebander will ensure optimum performance. Make it a habit to inspect your edgebander every time you use it.

This section covers the service adjustments or common procedures that may need to be made during the life of your machine.

Check if the following conditions below for repairs or replacement may be needed:

- Loose screws.
- Damaged/Loose Switches or buttons.
- Worn or damaged Cables, plugs or sockets.
- Damaged or Dirty chain.
- Dirty/Burn Glue roller or glue pot. The dust coming from saw machines can lock the Roller. Keep your edgebander at a distantly from saw machines.
- Any other condition that could adversely affect the safe operation of the equipment.

CLEANING

Cleaning your Edgebander is relatively easy. Use a vacuum cleaner, Air or a dry cloth, to remove the tape remains, and saw dust. If there is any glue residue use a resin remover and a clean cloth to remove it. Keep the table clean after each use. Periodically (and always with the machine off) it is important to do all the cleaning of the machine, removing glue residue that could affect the proper functioning of the equipment. Clean the guides, the rollers and the main cutter carefully.

To maintain quality of the cutter, it is very important to keep the blades free of glue residue or tape. To clean it, use a cloth with thinner or kerosene, gently wipe the cutter, removing all the glue residue.

LUBRIFICATION

All bearings are sealed and have permanent lubrication, do not lubricate them. For the other items on this machine, an occasional application of micro-electric machine oil is needed in the hinge that moves the glue pot and manual cutter.

Before lubricating, try cleaning the areas to be lubricated, eliminating the accumulation of dirt.

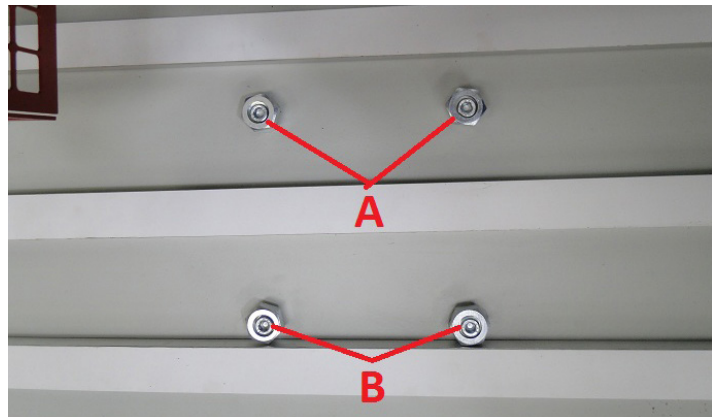
BRACKET

During to transport and even during use, it may be possible that the glue roller might come out of alignment.

When the glue roller is out of alignment it will cause incorrect application of glue onto the wood panel, applying uneven glue or not applying any glue onto the panel.

If the glue roller of your Edgebander is out of the alignment, you can readjust it easily by following these steps:

- Clean the glue axis, removing excess glue. For this heat the machine until melt point of the glue, facilitating the glue roller cleaning. Once the glue is melted, turn off the machine, stopping the roller in order to clean it.
- Support the side of a bracket on the table tabs, leaning against the glue axis.
- If any point of the bracket face is not touching the glue axis, you must do the following setting:
 - If the top of the axis is tilted to the back of the machine, loosen the Allen screws 5mm at point B (see figure below) and press (about 1/4 turn) the hex bolts also from the point B. Check the bracket again. If it is corrected, tighten the Allen screws.
 - If the top of the axis is tilted to the front of the machine, loosen the Allen screws at point A and tighten (about 1/4 turn) the hex screws. Check out the bracket again. If it is corrected, tighten the Allen screws; if not, repeat the procedure.



MAINTENANCE SCHEDULE

Daily:

- Spray Air to clean all dust on top and around the machine.
- Clean the guides, rubberized roller and manual cutter, remove all glue residue.
- Check the level of glue in the glue pot.

Weekly:

- Clean dust accumulation inside the back cover, around the glue roller and glue pot of the machine.
- Check for wear or damage to the buttons and cord.

- Check wear on the manual cutter..

ELECTRIC PANEL

NEVER MOVE OR DO MAINTENANCE ON THE ELECTRIC PANEL WITH MACHINE ON OR CONNECTED TO THE POWER SUPPLY. FOR SERVICE SPEAK AUTHORIZED MAKSIWA TECHNIAN WHEN YOU NEED TO HANDLE THE ELECTRIC PANEL.

Attached follows the wiring diagram of Edgebander for possible maintenance.

TECHNICAL ASSISTENCE

MAKSIWA assures the owner that their equipment, identify ed by the Serial number issued on the Warranty Terms.

The equipment under warranty, for two (2) years, is as followed:

1. The warranty period begins on the date of the Warranty Terms below.
2. Within the warranty period, the manual labor and the components replaced by manufacturing defect will beprovided for free if duly proved by Maksiwa Service.
3. Third-party manufacturing equipment that makes up the MAKSIWA equipment (such as motors, electrical equipment, belts etc.) are subject to the terms and conditions of warranty of their respective manufacturers.
4. In case an exchange of machine is needed, please return the defective part or machine to MAKSIWA.
5. All workplace adaptations for the equipment are under the responsibility of the machine owner.
6. If you notice any defect or malfunction when receiving the equipment, get in touch immediately with the manufacturer or Dealer. Do not turn it on.
7. Not included in this warranty is any technical visits aimed at cleaning or adjustments caused by wear, resulting from normal use of the equipment.
8. The warranty does not cover problems caused by mistreatment, carelessness, misuse or inappropriate use of the functions designed for this equipment in this manual, as well as poorly executed operations by untrained operators to operate it.
9. MAKSIWA is not responsible for lost productivity, direct or indirect damages caused to the owner of theequipment or to third parties, or any other expense, including lost profits.

10. This equipment requires the use of a dust collection system with a minimum of 2 hp.

11. Even under warranty, you may lose its validity as follows:

- a) Application of non-original components;
- b) Alteration of its original features;
- c) Lack of proper maintenance;
- d) Improper use of the equipment;
- e) Change in equipment or electronic connections;
- f) Damage caused by mechanical shock or exposure to unsuitable conditions (humidity, salt spray, corrosive agents, etc.);
- g) Damage caused by bad weather (floods, flooding, lightning, power outages etc.);
- h) Maksiwa is not responsible for damages to electrical components cause by power variation in your area.

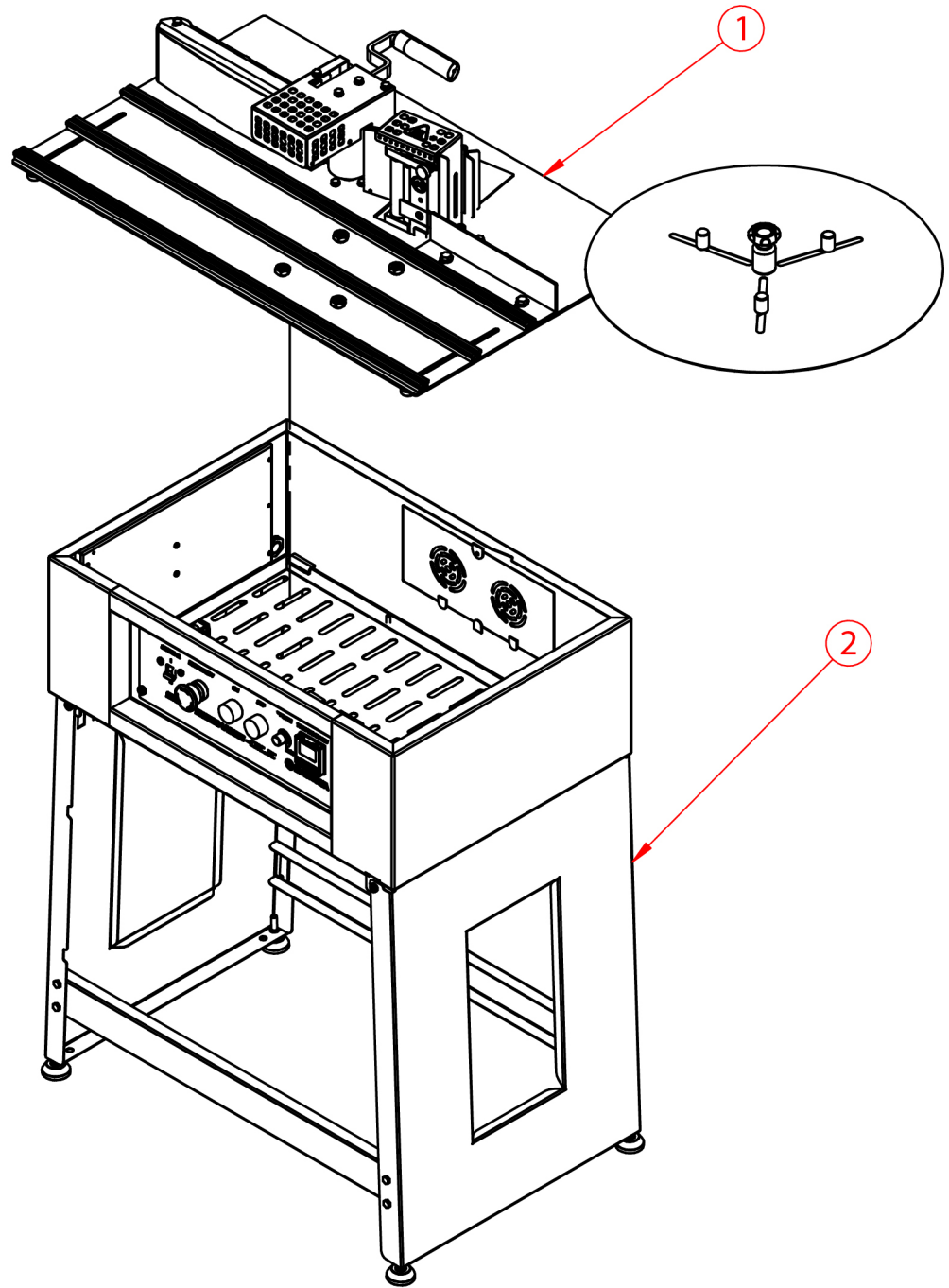
For your safety, trust the repairs, maintenance and adjustments (including inspection and replacement) for technical assistance recommended by MAKSIWA, always use genuine spare parts and accessories, reassembling to its original machine the same way.

Maksiwa International Inc.
4100 N Powerline Rd, Suite D3
Pompano Beach, Florida
ZIP Code: 33073
Telephone: +1 (754) 205-6717
Call us free: +1 (844) 319-6594
E-mail: tech@maksiwa.com
www.maksiwa.com

SOLUTION GUIDE

PROBLEM	CAUSE	SOLUTION
Machine is not turn on	Plug disconnected or connected improperly.	Check the connection and the voltage of your power supply.
	Main switch off.	Turn on the Main switch.
	ON switch off.	Turn on the ON switch (green).
	Emergency switch activated.	Rotate clockwise to release.
	Circuit breaker off.	Check the voltage of your Power supply (110V) and turn on the breaker inside of panel.
The glue is not heating	Temperature Controller not adjusted properly.	Adjust the temperature settings.
	Burned heat rod.	Contact the Maksiwa Service to change the resistance.
The tape is not gluing	The glue is not at the correct temperature.	Check the glue temperature specification.
	Missing glue at the glue axis.	Check level in glue pot.
	The glue is not compatible with this equipment.	Check the directions of the glue Manufacturer and compare with manual.
	The thickness of the glue is incorrect.	Adjust the thickness of the glue (check this manual).
	The glue Roller is out of alignment (square).	Adjust the bracket of the glue axis (check this manual).
	The edge of the panel is out of square.	Check the square of your panel and of your saw.

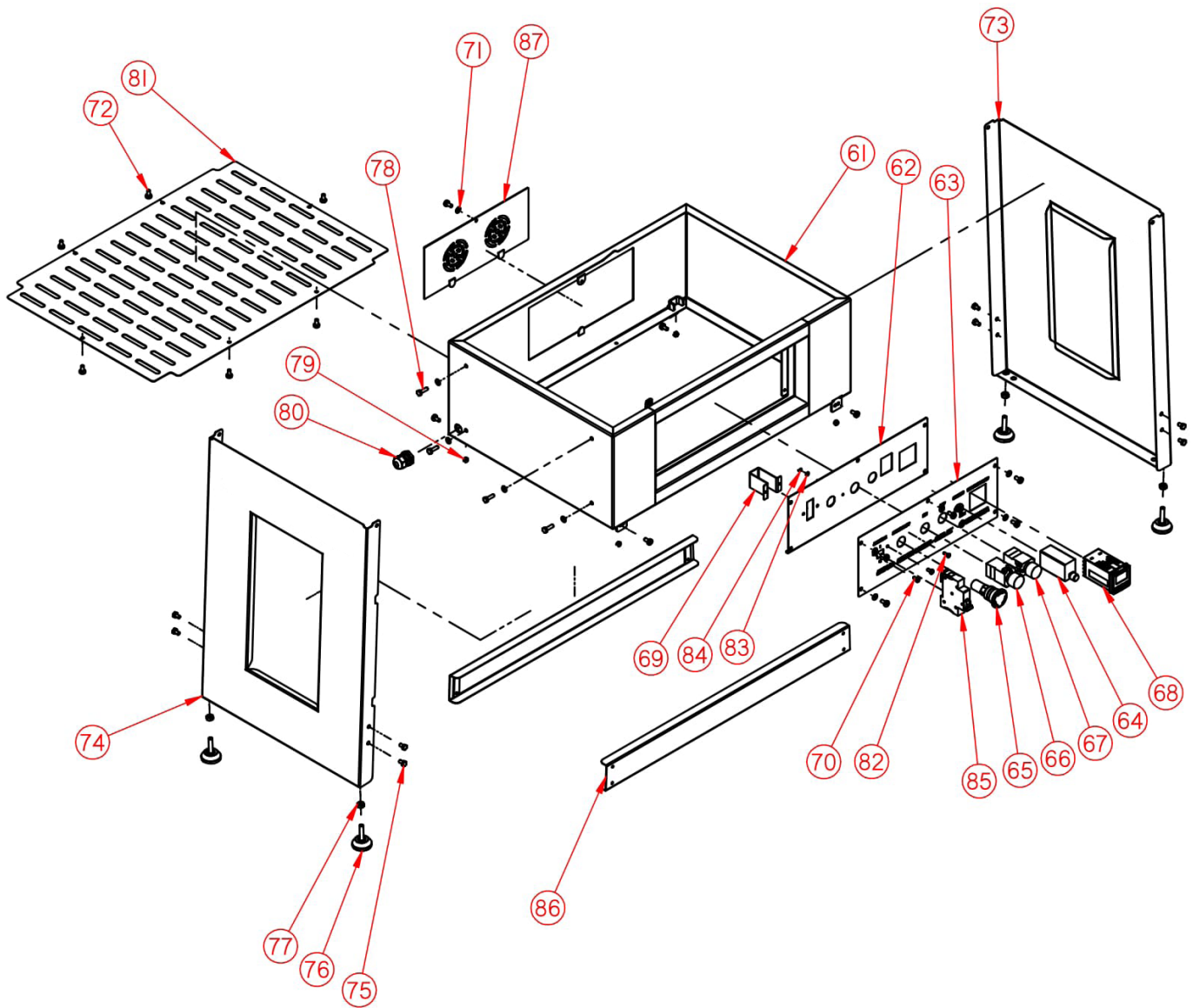
EDGE BANDER EXPLODED VIEW MAK03026



EDGEBANDER PART LIST CBC.EC

NO.	DESCRIPTION	QTY.
1	EDGEBANDER TABLE	1
2	EDGEBANDER BODY	1

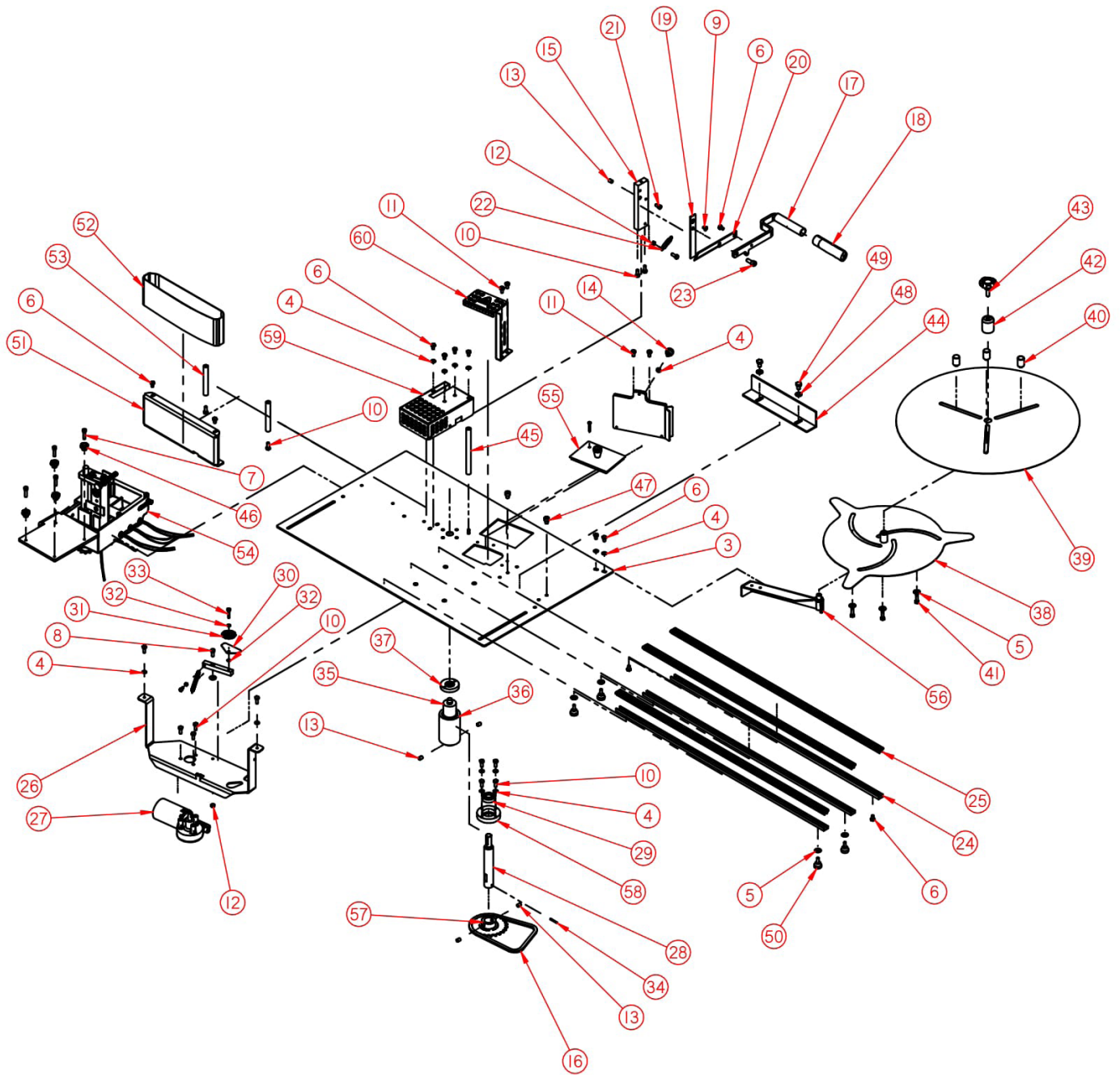
EDGE BANDER BODY CBC.EC EXPLODED VIEW



EDGE BANDER BODY PART LIST CBC.EC

NO.	DESCRIPTION	QTY.
61	TABLE BASE	1
62	CONTROL PANEL PLATE	1
63	PANEL CONTROL BOARD	1
64	POTENTIOMETER	1
65	EMERGENCY PUSH BUTTON	1
66	SWITCH PUSH BUTTON (NO) ON	1
67	SWITCH PUSH BUTTON (NC) OFF	1
68	DIGITAL TEMPERATURE CONTROLLER	1
69	FIXER KEY	1
70	PHILLIPS HEAD PAN SCREW M5X10 ZINC PLATED PICTH 1,0	2
71	FLAT WASHER M6 ZINC PLATED STEEL	10
72	PHILLIPS HEAD PAN SCREW M6X12 ZINC PLATED PITCH 1,0	16
73	RIGHT FOOT RETRACTABLE	1
74	LEFT FEET RETRACTABLE	1
75	TAP BOLT M6X10 ZINC PLATED STEEL PITCH 1,0	8
76	FOOT LEVEL 4013 M8X30	4
77	HEX NUT M8 ZINC PLATED STEEL PITCH 1,25	4
78	TAP BOLT M6X20 ZINC PLATED STEEL PITCH 1,0	4
79	HEX NUT M6 PARLOCK	4
80	CABLE GLANDS PVC 1/2 INCH	1
81	UNDER CABINET COVER	1
82	PHILLIPS HEAD PAN SCREW M4X12 PICTH 0,7	1
83	FLAT WASHER M4 STEEL	1
84	HEX NUT M4 ZINC PLATED STEEL PITCH 0,5	1
85	CIRCUIT BRAKER	1
86	CROSSPIECE	2
87	CLOSING REAR	1

EDGEBANDER TABLE EXPLODED VIEW CBC.EC



EDGE BANDER TABLE PART LIST CBC.EC

NO.	DESCRIPTION	QTY.
3	EDGE BANDER TABLE	1
4	FLAT WASHER M6 ZINC PLATED STEEL	13
5	FLAT WASHER 1/4 ZINC PLATED STEEL	8
6	TAP BOLT M6X10 ZINC PLATED PITCH 1,0	11
7	SOCKET HEAD CAP SCREW M6X25 ZINC PLATED STEEL PITCH 1,0	4
8	SOCKET HEAD CAP SCREW M6X16 ZINC PLATED STEEL PITCH 1,0	1
9	SOCKET HEAD FLAT SCREW M6X10 ZINC PLATED STEEL PITCH 1,0	1
10	TAP BOLT M6X16 ZINC PLATED STEEL PITCH 1,0	15
11	PHILLIPS HEAD PAN SCREW M6X12 ZINC PLATED STEEL PITCH 1,0	4
12	HEX NUT M6 ZINC PLATED STEEL PITCH 1,0	2
13	SET SCREW KNURLED CUP M8X10 PITCH 1,25	5
14	HANDLE BUTTON M6X8 PITCH 1,0	1
15	BLADE FIXED SUPPORT	1
15	TRANSMISSION CHAIN 1/2 410-1RX5M	1
16	ARTICULABLE ARM OF THE KNIFE	1
17	HANDLE OF KNIFE	1
18	STRAIGHT KNIFE	1
19	SHARP KNIFE	1
20	SOCKET HEAD CAP SCREW M6X12 ZINC PLATED STEEL PITCH 1,0	1
21	TRACTION SPRING . E-1 DE-10 DI-8 C-30 29 TURNS GALV	1
22	SOCKET HEAD CAP SCREW M8X20 ZINC PLATED STEEL PITCH 1,25	1
23	SLID SUPPORT	3
24	HOPE SECTION GUIDE PLS 800MM	3
25	MOTOR SUPPORT	1
26	MOTO REDUCER COMPACT 24V DC	1
27	ROLL DRIVE SHAFT PROTRACTOR	1
28	BEARING 6202 2RS/LLU/DDU/NSE WITHOUT CLEARANCE	1
29	CHAIN STRETCHER GUIDE OF THE GLUEING DEVICE	1
30	PULLEY RED MOD SX-50 SIDE 38X24X16	1
31	FLAT WASHER M5 ZINC PLATED	2
32	TAP BOLT M5X25 ZINC PLATED STEEL PITCH 0,8	1
33	ELASTIC SHAFT 3MMX25MM	1
34	DRIVING ROLL	1
35	RUBBER ROLL	1
36	TOP BEARING HOUSING OF THE ROLL DRIVING	1
37	TAP BASE SET	1
38	ASSIST. BASE TAPE	1
39	STOPPER BASE TAPE	3
40	TAP BOLT M6X20 ZINC PLATED PITCH 1,0	3
41	LOCKER TAPE SUPPORT	1
42	HANDLE D35 M8 X 25 SCREW 1,25	1
43	INNER GUIDE	1
44	ROD TAP CUT PROTECTION	1
46	TAP BOLT ADJUSTMENT GLUEING DEVICE	4
47	SOCKET HEAD CAP SCREW M8X10 ZINC PLATED STEEL PITCH 1,25	2
48	FLAT WASHER M8 ZINC PLATED STEEL	2
49	TAP BOLT M8X12 ZINC PLATED STEEL PITCH 1,25	2
50	HANDLE BUTTON M6X14 PITCH 1,0	4
51	OUTTER BASE	1
52	OUTTER BASE BELT	1
53	OUTPUT SHAFT ROLL	2
54	GLUE APPLICATION SYSTEM SET	1
55	COVER SET OF THE GLUE POT	1
56	SUPPORT ARM OF TAPE SUPPORT	1
57	PINION Z4 TEETH WITH FIT FOR BICYCLE	1
58	BEARING HOUSING OF DRIVING ROLL	1
59	TAP CUT PROTECTION	1
60	GLUE AXIS COVER	1

**ELECTRIC DIAGRAM
EDGE BANDER
MAK03026**

CODE ON PROJECT	DESCRIPTION	APPLICATION	BRAND	MODEL	CERTIFICATIONS	
					UL/ CUL	CSA
FT1	POWER SUPPLY SWITCHED	POWER 24 VDC	SCHNEIDER	MABLIEM24025	E164867	-
Q1	BREAKER SINGLE PHASE CURVE B - 16 A	OVER CURRENT PROTECTION	SCHNEIDER	MULTI 9 - B60 - 16A	E 90509	-
K1	CONTACTOR 24 VCA	ENABLE CONTROL	SCHNEIDER	LPIK06-10BD	E164862	-
K2	CONTACTOR 24 VCA	ENABLE MOTOR	SCHNEIDER	LPIK06-10BD	E164863	-
SSR1	STATE SOLID RELAY 25 AMPS	TEMPERATURE CONTROL	SCHNEIDER	SSP1A125BDT	E359576	-
B0	EMERGENCY BUTTON	EMERGENCY STOP	SCHNEIDER	XB7E5542P	E164353	2582845
B0.1	PUSH BUTTON NC	TURN OFF	SCHNEIDER	XB7NA42	E39281	2465317
B1 + L1	PUSH BUTTON NO + SIGNAL LED 24VCC	TURN ON + INDICATION MOTOR ON	SCHNEIDER	XB7NW33B1	E39282	2465318
PWM1	SWITCH ON - OFF MOTOR + PWM	FEEDER MOTOR ROLL GLUE	MAKSIWA	MAK-08	-	-
CT1	TEMPERATURE CONTROLLER	TEMPERATURE CONTROL	NOVIUS	N1040-PR	E300526	-
TP1	THERMOCOUPLE TYPE J - 4,2 X 50mm	TEMPERATURE CONTROL	LEOPAR	4,2 X 50 mm	-	-
M1	MOTO REDUCER CC	APPLICATOR ROLL OF GLUE	BOSCH	F006WM0310	-	-
R1 - R4	CARTRIDGE RESISTANCE 360 W X 140 V	HEATING TANK OF GLUE	DONGGUAN DETAI	360 W X 140 V	E336037	-
XC1	CONNECTOR BAR	CONNECTION MAIN POWER	CONNECTWELL	CT52.5UN (8X) EP2.5/4UN (1X)	E220513	-
XC2	CONNECTOR BAR	CONNECTION RESISTANCES AND THERMOCOUPLE	CONNECTWELL	CMB4 (10X) CMBEP (2X)	E220514	-
-			YUYAO FANGHUA	3X14 AWG	ELBZ.E351351	-
			NIGBO XUANHUA	3X14 AWG	ELBZ.E257089	-
CB2	GLUE TANK CABLE	CONNECTION RESISTANCES AND THERMOCOUPLE	LAPP GROUP	5 X 1,5 MM²	E63634	1185170
L1 / L2 / L4 / N	FLEXIBLE CABLE 1,5 MM² - WHITE	WIRING 110 VCA	FORT-FIO	1 x 1,5 mm²	E243582	-
L3	FLEXIBLE CABLE 0,5 MM² - WHITE	WIRING 110 VCA - FONT 24VDC	FORT-FIO	1 x 0,5 mm²	E243583	-
24+ / 24+A / 24+B	FLEXIBLE CABLE 0,5 MM² - RED	WIRING 24 VDC	FORT-FIO	1 x 0,5 mm²	E243584	-
24- / 24-A / 24-B	FLEXIBLE CABLE 0,5 MM² - BLUE	WIRING 24 VDC	FORT-FIO	2 x 0,5 mm²	E243585	-
1, 2, 3, 4, 5	FLEXIBLE CABLE 0,5 MM² - GRAY	WIRING 24 VDC	FORT-FIO	1 x 0,5 mm²	E243586	-
	CABLE DUCT	ORGANIZATION OF WIRING	PHOENIX CONTACT	CD-HF 25X40	E328576	2482769
	PRESS CABLES	PROTECTION CABLES	LAPP GROUP	SKINTOP 5-TM	E79903	-

DRESCRIPTION ENABLE HEATING AND CONTROL

PROJECT NIVALDO DA MATA

DRAWING NIVALDO DA MATA

ESCALE DATE HARD FILE

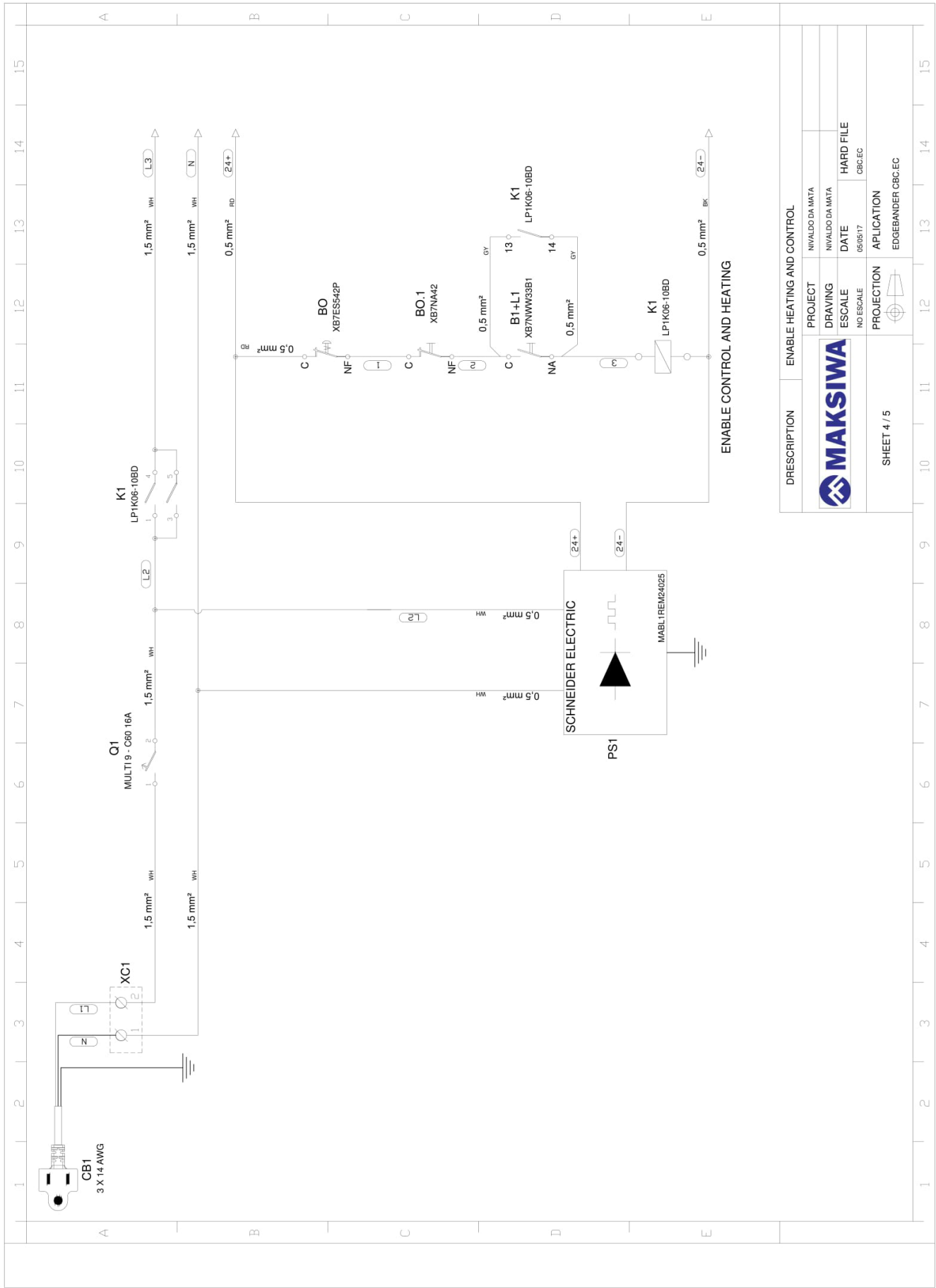
NO ESCALE 05/05/17 CBC.EC

PROJECTION APPLICATION

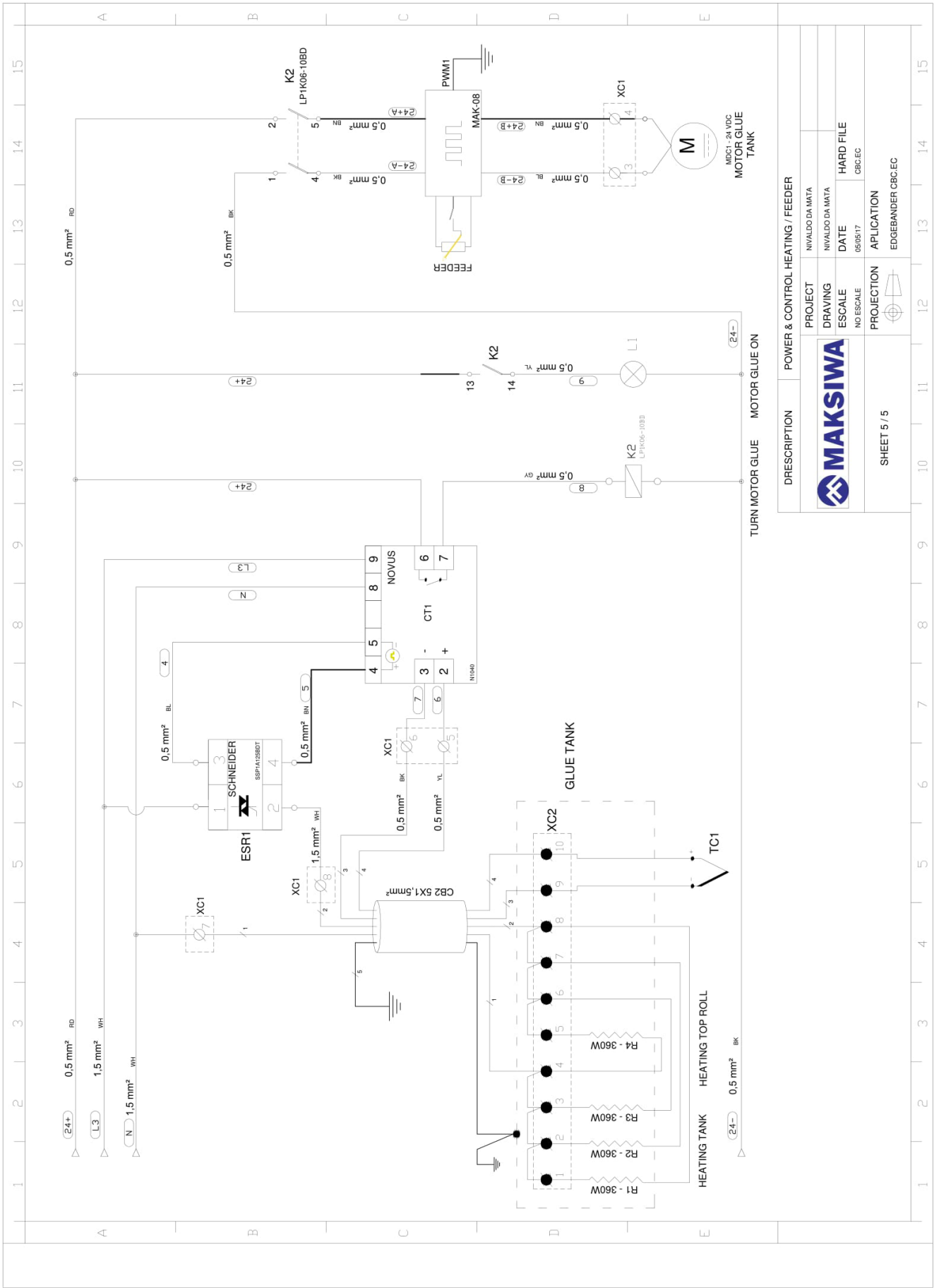
EDGE BANDER CBC.EC



SHEET 2 / 5



DESCRIPTION		ENABLE HEATING AND CONTROL	
PROJECT	INIVALDO DA MATA	DRAWING	INIVALDO DA MATA
ESCALE	NO ESCALE	DATE	05/05/17
PROJECTION	EDGE BANDER	APPLICATION	CBC/LEC
SHEET 4 / 5		HARD FILE	
		CBC/LEC	



DESCRIPTION		POWER & CONTROL HEATING / FEEDER	
	PROJECT	NIVALDO DA MATA	
	DRAWING	NIVALDO DA MATA	
	ESCALE	DATE	HARD FILE
	NO ESCALE	05/05/17	CBC/EC
	PROJECTION	APPLICATION	
		EDGE BANDER CBC/EC	
SHEET 5 / 5			