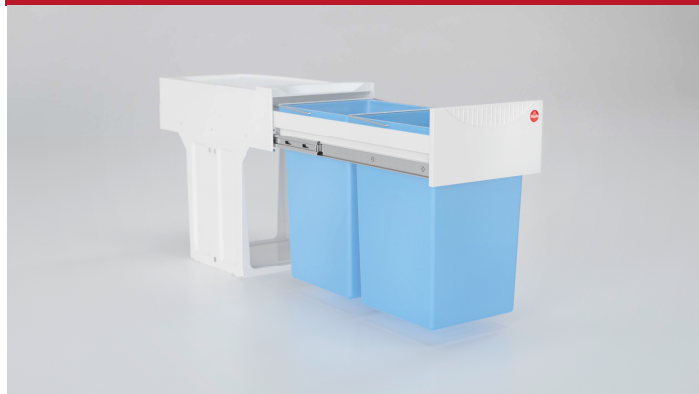




Pull-Out Waste bins Tandem Anti-Bacterial



The antibacterial built-in waste-separation system with 2 x 15 L bins for installation into kitchen cabinets with hinged doors.



Application

- Under sink cabinet of 300mm (11 13/16") external width in a kitchen



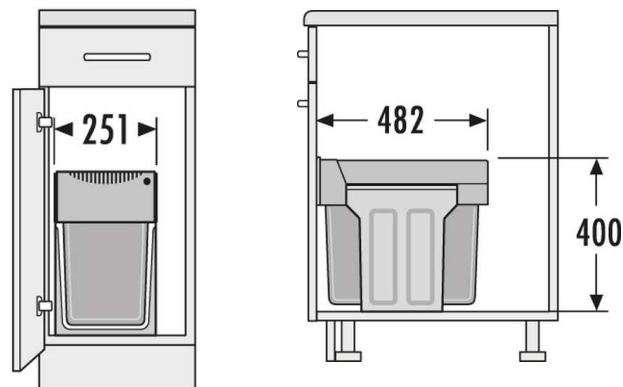
Advantages

- Lasting, permanent antibacterial protection
- Full antibacterial effect even after 15 years
- Material tested against more than 50 types of bacteria
- Tested in over 2,000 applications
- Unusually high speed of action
- FDA approval for use with foods
- Does not contain any nano silver
- Safe to use – for both, processors and end users
- Effectiveness tested according to ISO 22196
- 2 x 15 L blue bins with handles for easy removal
- White frame and front panel
- Easy bottom mounting with only few screws.



Description

The special surface structure of the plastics used prevents the germination of pathogens of any kind. All plastic surfaces, such as the system lid, handle panel, and inner bins have been given antibacterial protection through the addition of silver ions, reducing the reproduction of bacteria by up to 99.9 %. The active antibacterial agent is contained in the processed plastic, ensuring it remains active and offers lasting antimicrobial protection for many years.



No.	Description	Int. dimensions required W x D x H
3667030	TANDEM ANTIBACT.2X15L WHITE	260mm x 504mm x 420mm 10 1/4" x 19 7/8" x 16 1/2"