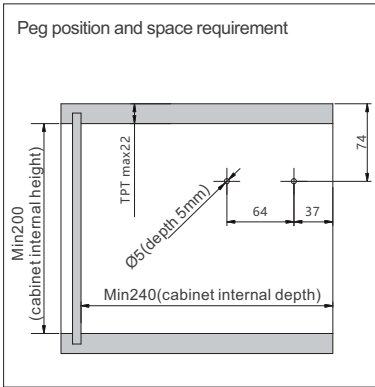
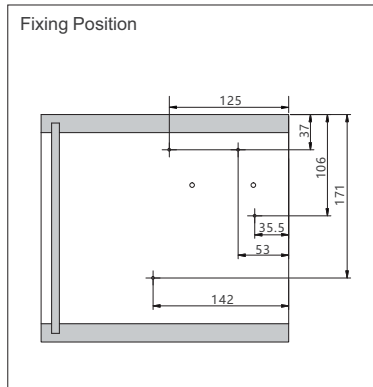


# Richelieu ai<sup>2</sup> Lift System- Atmos Series

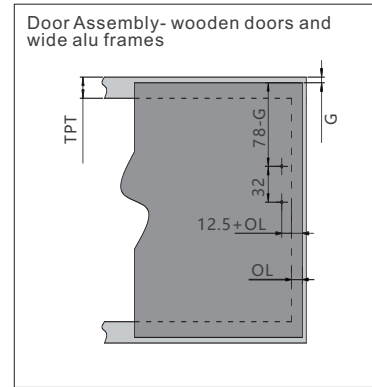
## Installation Dimensions(mm)



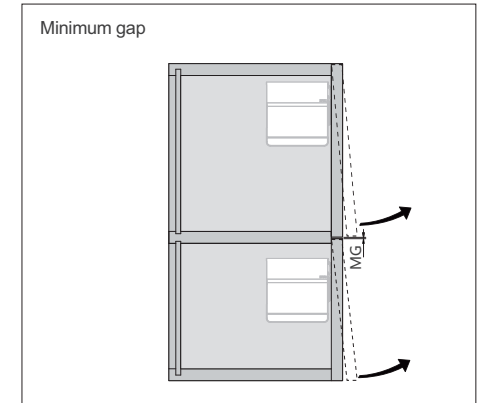
TPT: top panel thickness



4 pieces of #6 x 1-1/2" wood screw, flat head

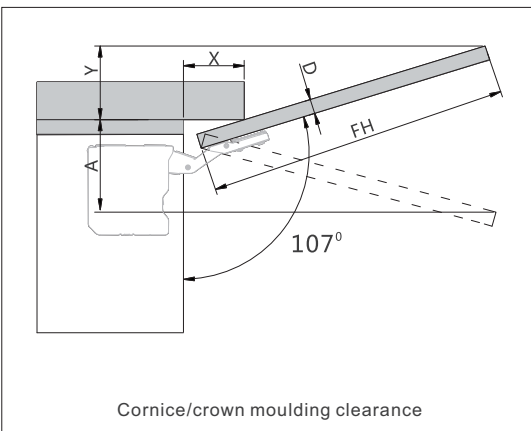


Wooden Door: 4 x flat-head #6 x 5/8" wooden screws  
Wide Alu Door: 4 x self-tapping screws (not provided)  
OL: door overlay of side panel  
G: gap



MG: Minimum gap 2mm

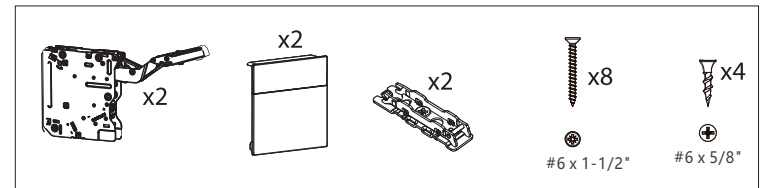
## Installation Dimensions(mm)



FH: front height

D(mm)	16	19	22	26	28
X(mm)	70	58	49	35	26
Opening angle restrictors		Space requirement (mm)			
Without		$Y = FH \times 0.29 - 15 + D$			
100° (#AT00ANGLE100)		$Y = FH \times 0.17 - 15 + D$			
75° (#AT00ANGLE75)		$A = FH \times 0.26 + 15 - D$			

## Included in Kit Pack

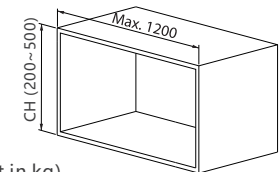


## Calculating power factor PF

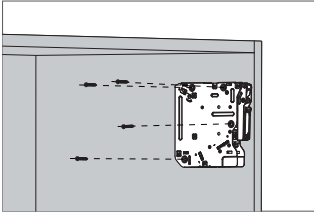
Model	Power factor PF
#AT00LD	580-1105
#AT00MD	1105-1920
#AT00HD	1920-3500

PF = CH x (door weight + 2 x handle weight in kg)

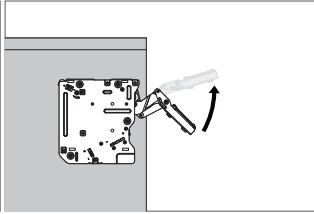
CH: cabinet height



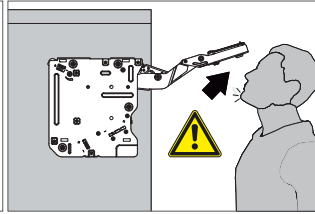
## Assembly



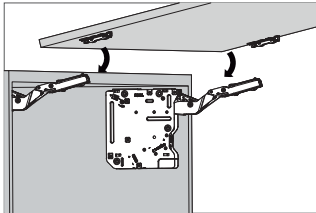
Assembly



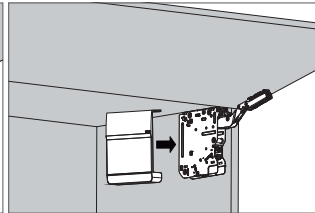
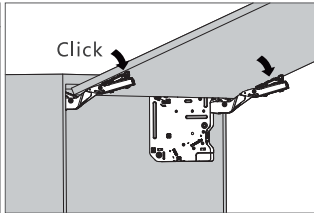
Caution when opening arm



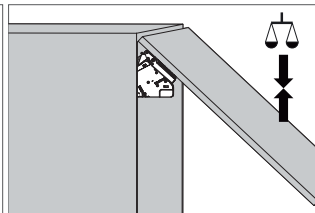
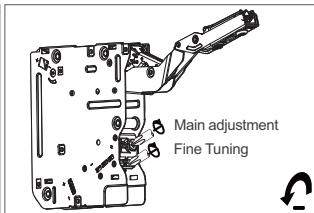
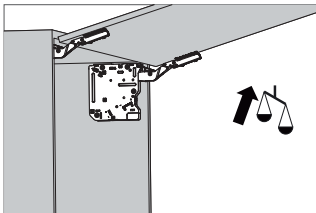
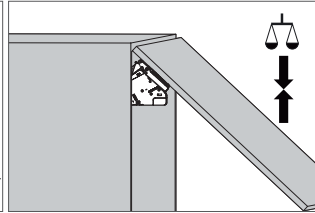
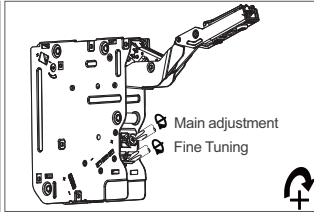
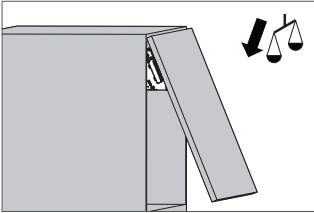
The arm of this device could spring up and cause injury. Do not push the arm down without door attached.



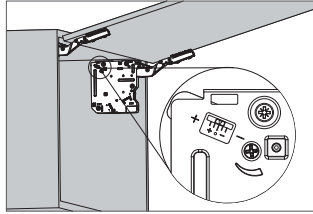
Door Assembly



## Lift Mechanism Adjustment

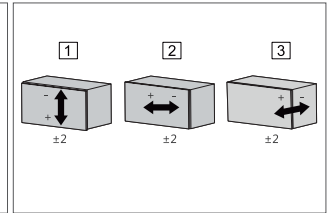
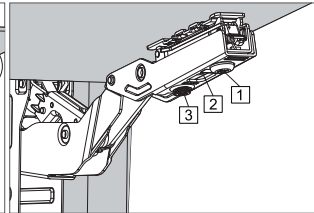
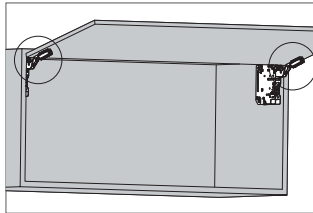


## Closing Speed Adjustment

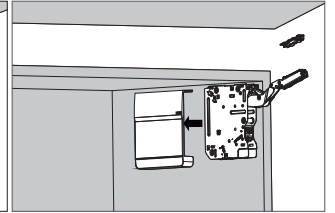
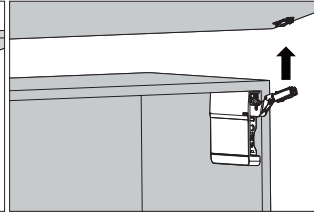
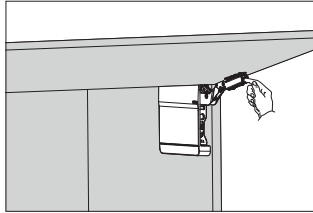


"+" increasing soft-closing time (turn adjustment screw counter-clockwise)  
 "-" reducing soft-closing time (turn adjustment screw clockwise)

## Door Position Adjustment

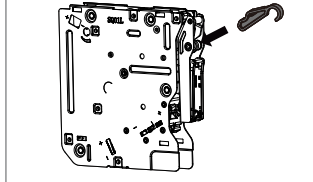


## Removal

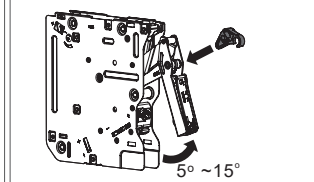


## Opening Angle Restrictor

100° (#AT00ANGLE100)



75° (#AT00ANGLE75)



Assembly