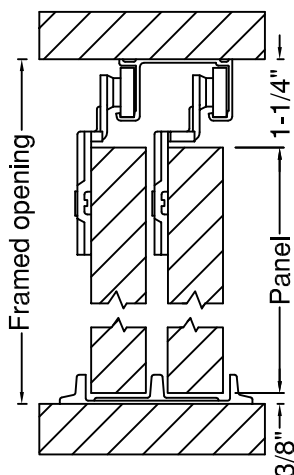


Framed opening = 1-1/4" + PANEL + 3/8"
 Vertical leveling adjustment (±1/8")
 (Dimensions apply to single, bi-parting, and bypassing installations.)



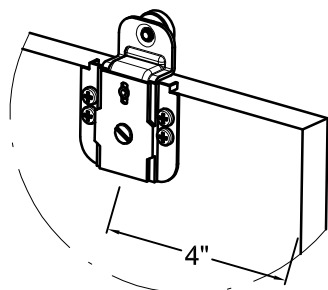
6000 Sliding Door
Hardware Sets

Set No.	Type Of Installation	Door Thickness	Type of Mounting	Wheels per carrier	Type of track	Weight capacity lbs per door
6023	single & bi-parting	3/4" to 1-3/4"	side	one	aluminum	50
6053	single & bi-parting	3/4" to 1-3/4"	side	two	aluminum	75
6034	bypassing	3/4" or 1-3/8"	side	one	aluminum	50
6064	bypassing	3/4" or 1-3/8"	side	two	aluminum	75
6065	bypassing	3/4"	side	two	aluminum, fascia	75

Note:

- For use only in framed installations, **do not use in an open ended application.**
- Since these instructions apply to 8 different styles, note your set number, and follow those steps pertaining to it.
- For bi-parting doors use an additional set of hardware.
- These instructions assume a properly framed rough opening with carefully leveled header.
- To assure door(s) do not unintentionally disengage from the track, a floor guide **must** be used.
- It is recommended to pre-drill all screws.

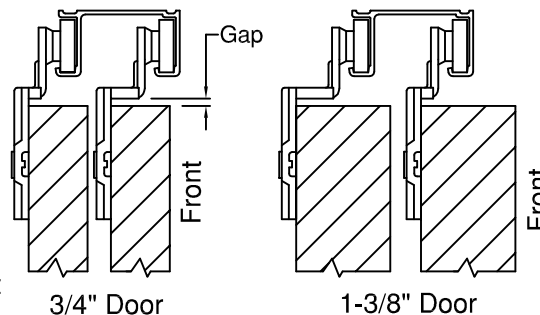
1 Mount Carriers to Door(s)



Mount carriers approximately 4" from edge of door using #8 x 3/4" pan head tapping screws provided.

Note:
 For 3/4" doors use wide offset carrier on front door.
 For 1-3/8" doors use wide offset carrier on rear door.

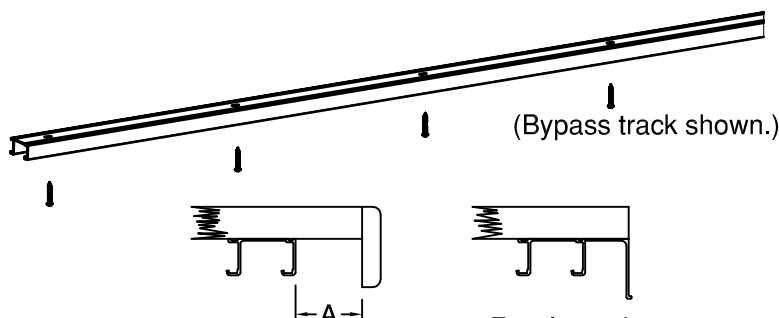
Note: Leave minimum 1/4" gap for adjustments.



2 Mounting Track

Mount track to header with face of track facing room, using #8 x 1-1/4" pan head tapping screws supplied.

To allow for placement of fascia strip on the sets listed at right, mount track back from front of header the dimension shown.



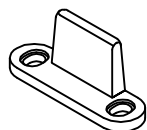
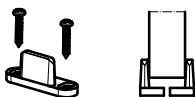
Set No	3/4" Door	1-3/8" Door
6023	1/8"	1"
6053		
6034		
6064		

071-11-0028-00-0, Rev. C [INSTRUC\071-11-0028-00-0]

3 Floor Guide

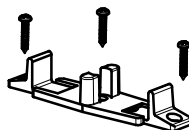
Mount floor guide as necessary, plumb with the track using the pan head tapping screws provided.
(Floor guide must be used and must be engaged with the door throughout the door travel.)

6023
6053

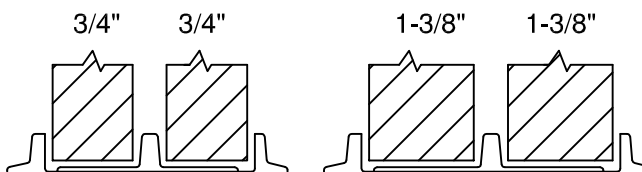


No. 110 Floor Guide: for single door installations.

6034
6064
6065



114 Floor Guide



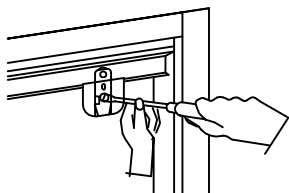
Instructions for installing No. 114 floor guide are printed on envelope containing the guide.

4 Mounting Door(s)

6023 Lift door and slip wheels of carriers
6053 into track. Tilt bottom of door outward to facilitate insertion.

6034 Hang rear door first. Lift door and slip
6064 wheels of carriers into track. Tilt bottom of
6065 door outward to facilitate insertion.

5 Vertical Adjustment



Slightly loosen mounting screws and turn back adjusting screw to raise or lower door. Then tighten mounting screws firmly. Confirm 3/8" dimension from floor to bottom of door.

071-11-0028-00-0, Rev. C [INSTRUC\071-11-0028-00-0]