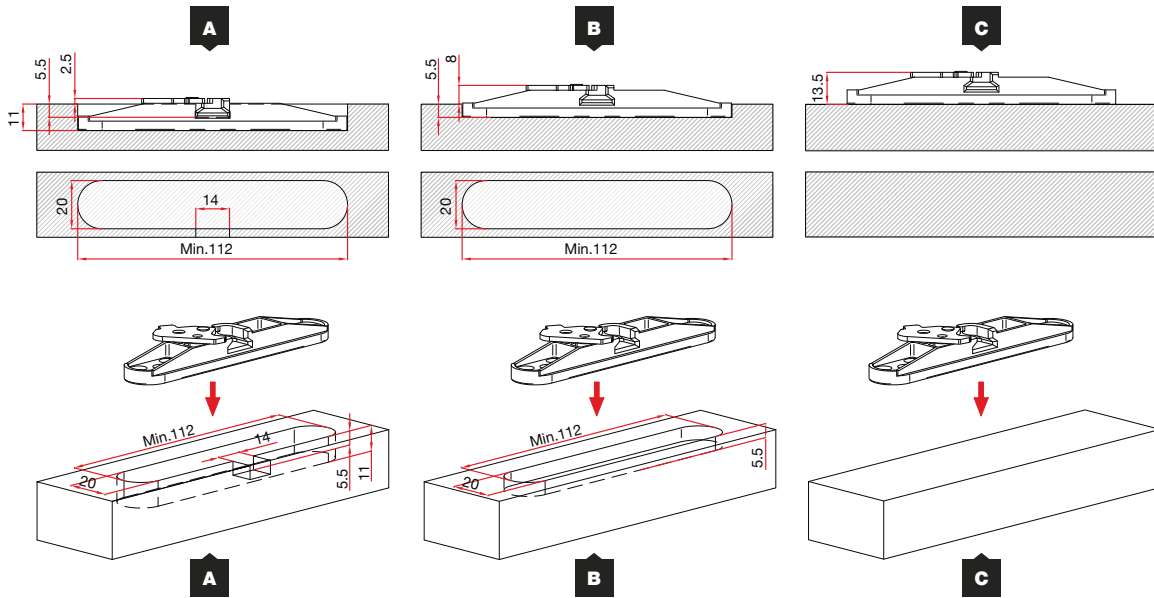


**BREVETÉ**

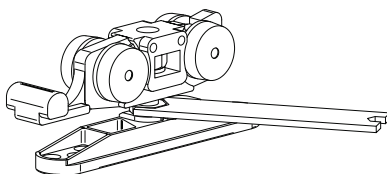
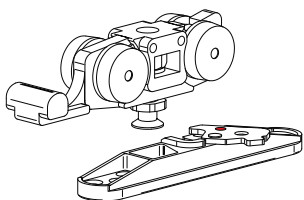
**PATENTED**

**Step**

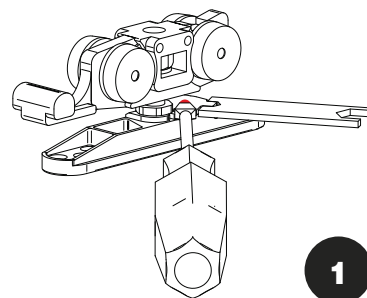
**QUINCAILLERIE AVEC SUPPORT AUTOMATIQUE AVANT / HARDWARE WITH FRONTAL AUTOMATIC CLAMP**



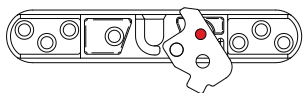
**FACILE À ASSEMBLER / EASY MOUNTING**



**Réglage / Adjustment**



**1**

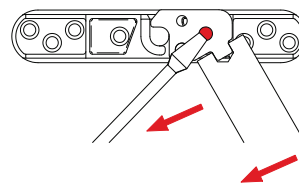


**Positionnement pour l'emboîtement  
Coupling positioning**



**Locket de sécurité  
Safety lock**

**Emboîté / Coupled**



**Désassemblage  
Disassembling**

**2**

