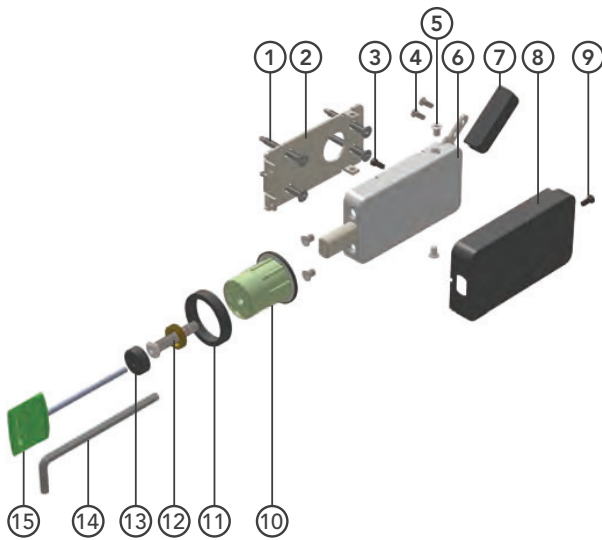


Installation based on barn door application where doors are hung on the OUTSIDE of the room.

- Install Lock on the jamb wall facing the opening
- Install trim plate on the jamb wall facing the opening
- Install strike with an emergency release on the barn door
- Adjustable strike for door thickness from 1-3/8" to 2-1/4"

NO.	DEADBOLT LENGTH	THUMB-LEVER LENGTH	LOCK CASE
171023	1"	1-9/16"	3-9/16" x 1-7/8" x 9/16"

Part List



ITEMS	NO.	DESCRIPTION	QTY
Lock	1	#8 x 1-1/2" Wood Combo Screw	4 EA
	2	Mounting Plate	1 EA
	3	M3 x 7 mm Handing Screw	1 EA
	4	M3 x 6mm Thumb Piece Screw	2 EA
	5	M4 x 6 mm Installation Screw	4 EA
	6	Barn Door Lock Body	1 EA
	7	Thumb Piece	1 EA
	8	Lock Body Cover	1 EA
	9	M3 x 6 mm Cover Screw	1 EA
Strike	10	Dust-proof strike	1 EA
	11	Washer	1 EA
	12	Hollow screw	1 EA
Others	13	Decorative cap	1 EA
	14	4 mm Allen Wrench	1 EA
	15	Emergency key	1 EA
	-	Door prep template	1 EA
	-	Installation instruction	1 EA

Tools Suggestion

DO NOT USE:
Spade Bit



Stud Finder



Hole Saw



Level



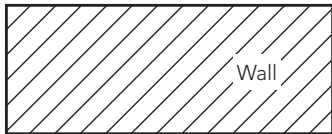
T-Square



Drill Bit

Step 1. Wall and Door Preparation

Lock Side for Left Hand Installation



Min 1" for Left Hand
Installation

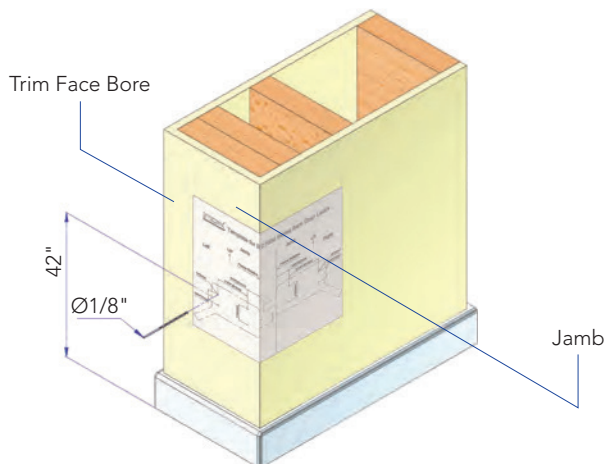
Lock Side for Right Hand Installation



Min 1" for Right Hand
Installation

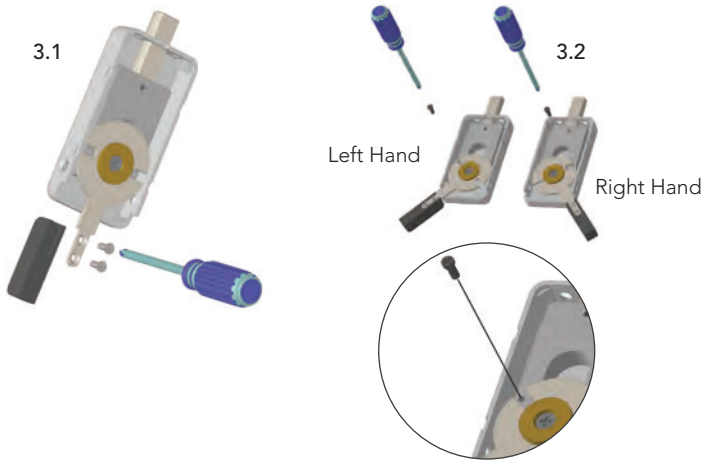
Ensure that you have a minimum 1" door overlap before installing BD1000 Privacy Lock.

Step 2. Prep on the Jamb



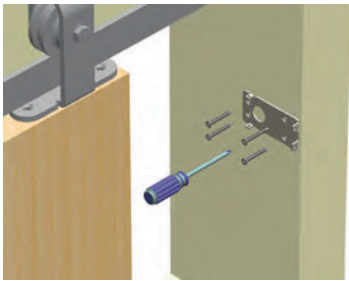
Remove Barn Door if it interferes with the lock installation. Use template to mark and drill pilot holes.

Step 3. Handing the Lock

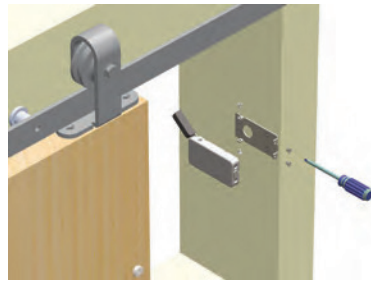


- A. Install thumb lever to the lock.
Observe following steps if you wish to flip lock orientation from left to right. Use a #1 Phillips screwdriver.
- B. Remove handing screw and discard.
- C. Flip lever position (Fig 3.2) to opposite orientation.
- D. Install new handing screw from fixing pack.

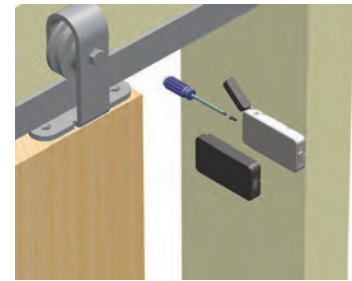
Step 4. Installation of the Lock



A. Attach mounting plate to door jamb using 4 combination screws.



B. Install lock body and secure with 4 installation screws.



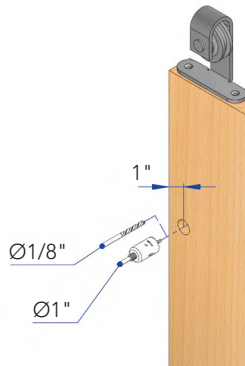
C. Install lock cover and screw.
NOTE: Slide front part of cover over body, hooking alignment tab onto body. Then push back of cover over body to snap into place.

Step 5. Prep and Install Dust-Proof Strike with Emergency Release on Barn Door

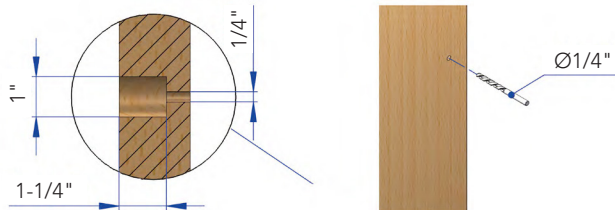
A. Move the barn door to the closed position; throw the lock bolt to mark the exact strike centre position. Make sure this location is minimum 1" to the edge of the door.



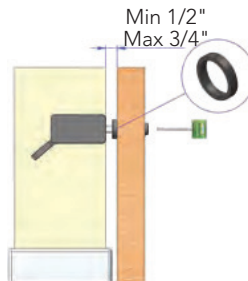
B. Using the strike centre position as a guide, drill a pilot hole through the door with a 1/8" bit from strike side. With the pilot hole as a guide, use a 1" diameter hole saw to drill a 1-1/4" deep hole. **Do not drill through the door.**



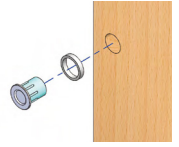
C. With the pilot hole as a guide, use a 1/4" bit to drill a hole from the outside to connect with the strike bore hole.



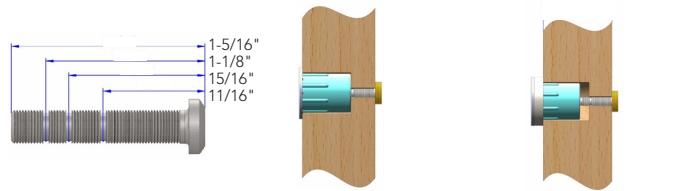
Note: Standard barn door to wall clearance is approximately 3/8" to 1/2". Install additional spacer as needed behind the strike faceplate if the door to wall clearance is over 1/2". Additional spacers can support maximum clearance of 3/4" between door and wall.



D. Install the 1" dust-proof strike with the 1/4" release screws on the outside.

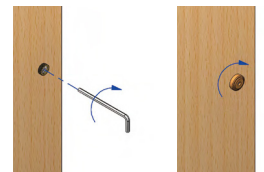


E. Cut break-away screw to appropriate door thickness.



DOOR THICKNESS	LENGTH WITHOUT SPACER	LENGTH WITH SPACER
1-3/8"	11/16"	15/16"
1-3/4"	1-1/8"	1-5/16"

F. Install break-away screw and tighten with Allen wrench. Do not over tighten. Screw on decorative cap by hand.



G. Use release key (provided with lock set) to push through centre hole on release to push lock bolt back and unlock door.

