



LA COULISSE DISSIMULÉE ÉCONOMIQUE IDÉALE!

No.	Description
718400	DISSIMULÉE 7/8 EXT S/C 400MM
718450	DISSIMULÉE 7/8 EXT S/C 450MM
718500	DISSIMULÉE 7/8 EXT S/C 500MM
718550	DISSIMULÉE 7/8 EXT S/C 550MM
718002	DISPOSITIF AVANT P/718 DROIT
718003	DISPOSITIF AVANT P/718 GAUCHE



Applications

- Armoire sans cadre
- Tiroir en bois
- Tiroirs de métal OPTIMIZ-R



Qu'offre-t-il? (Attributs)

- Fermeture amortie
- Extension 7/8 (Full Access)
- Compatible avec le perçage de Blum et Hettich
- Certification KCMA
- Capacité de 75lbs
- Exclusivité Richelieu



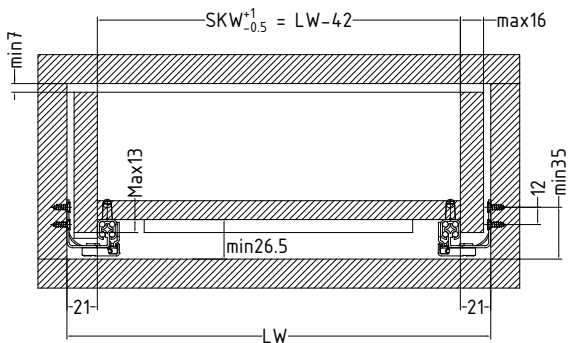
COULISSE DISSIMULÉE SÉRIE 718 "FULL ACCESS"



Largeur du tiroir

Épaisseur du matériel: 16mm max.

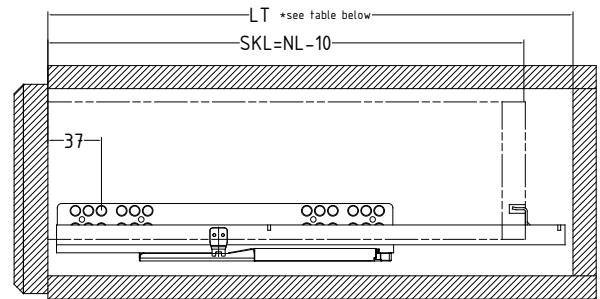
LW= Largeur interieur Cabinet SKW= Largeur intérieure du tiroir



Profondeur du cabinet

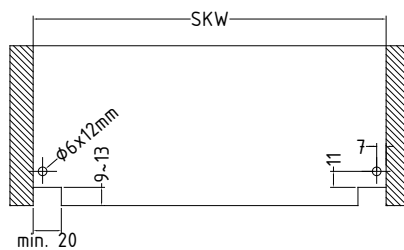
SKL= Profondeur du tiroir

LT= Profondeur intérieure du cabinet (min.)

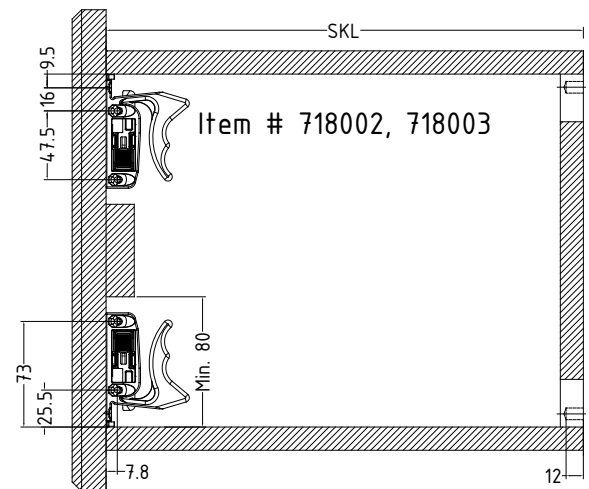


Perçage et encoches du dos du tiroir

SKW=Internal Drawer Width



Montage des dispositifs de verrouillage

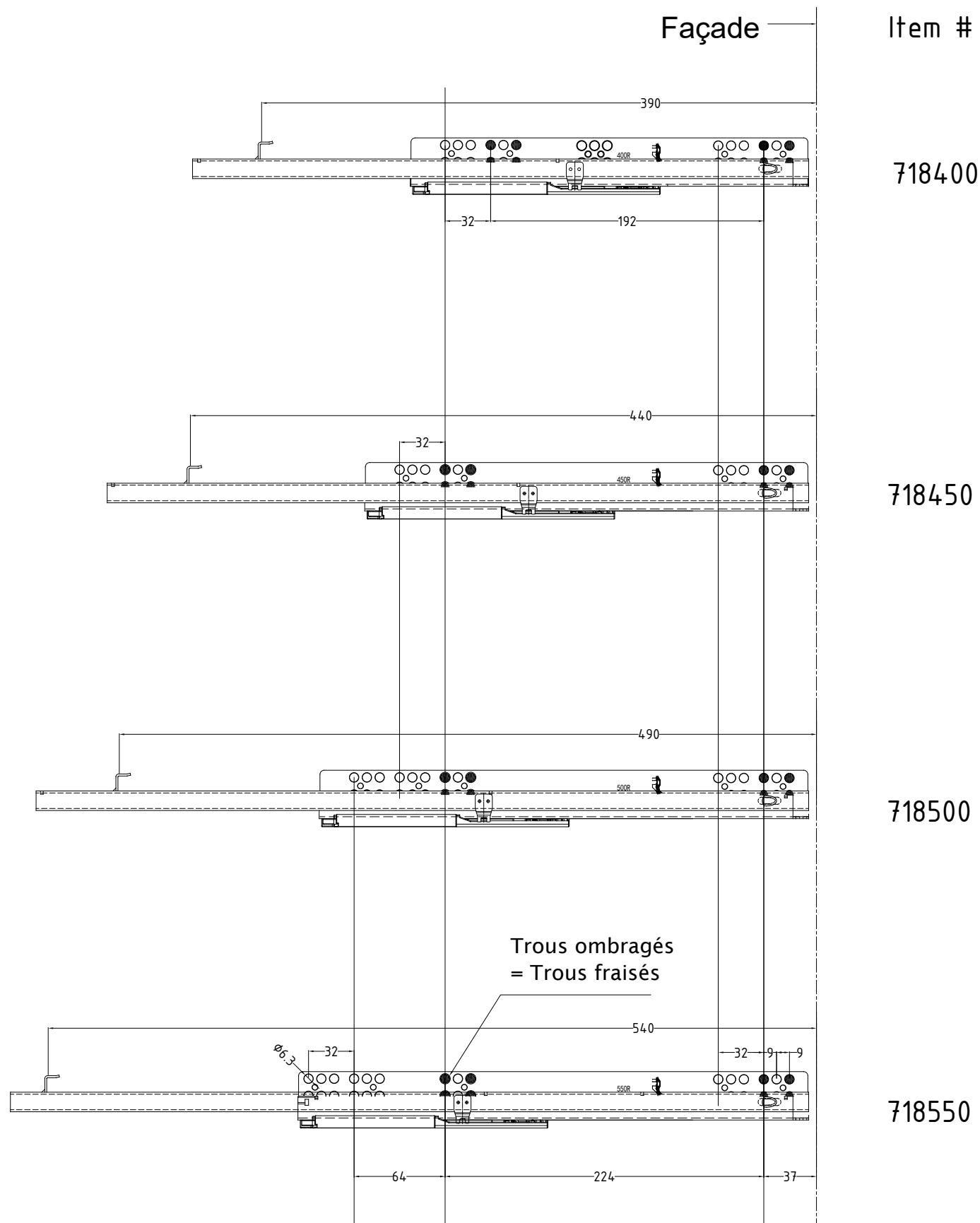


Item #	718550	718500	718450	718400		
Longeur nominale des coulisses (NL)	550	500	450	400		
Porfondeur du tiroir (SKL)	540	490	440	390		
Prodondeur intérieure du cabinet (min) (LT)	572	554	504	444		
Extension du tiroir	440	422	384	336		

COULISSE DISSIMULÉE SÉRIE 718



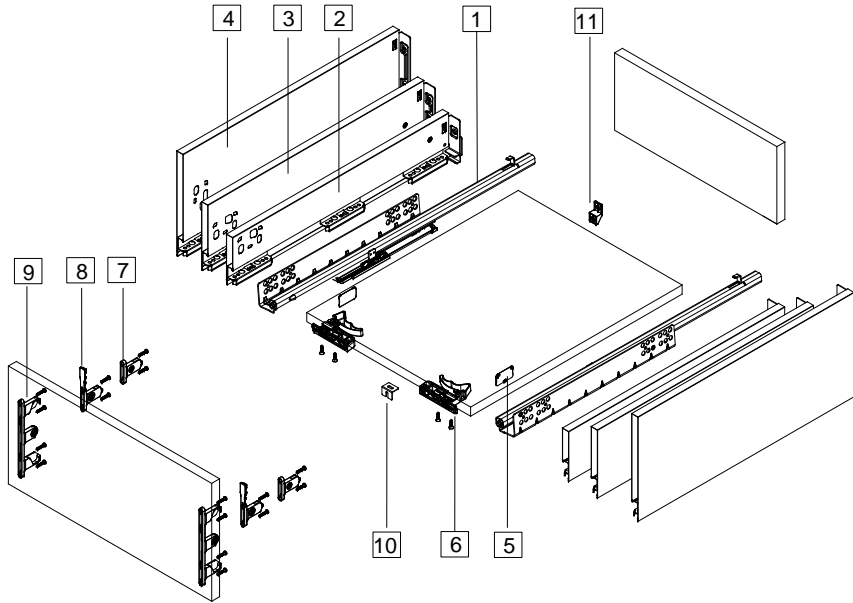
Montage des coulisses (mm)





Tiroir OPTIMIZ- R sur coulisse 718

Pièces



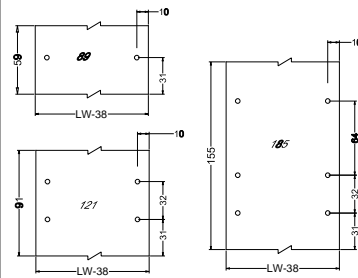
1. Coulisses 718	7. Attaches avant (89 mm)
2. Côté de tiroir 89 mm	8. Attaches avant (121mm)
3. Côté de tiroir 121 mm	9. Attaches avant (185 mm)
4. Côté de tiroir 185 mm	10. Support supplémentaire - Façade*
5. Caches	11. Support supplémentaire - Dos*
6. Dispositifs de verrouillage	(* Optionnel pour tiroir large)

Tiroir Longueur nominale (NL)	Profondeur intérieur du tiroir	Profondeur min. du cabinet (LT)
400mm	374mm	444mm
450mm	424mm	504mm
500mm	474mm	554mm
550mm	524mm	572mm

Dimension du dos et fond du tiroir - Matériel de 16mm

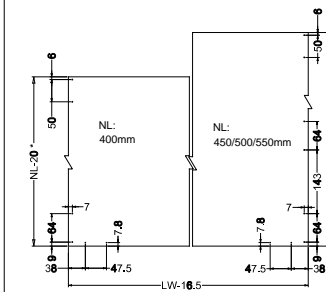
LW : Largeur intérieur du Cabinet
NL: Longueur nominale du tiroir

Dos du tiroir



Drawer Model	89	121	185
Back Height (mm)	59	91	155

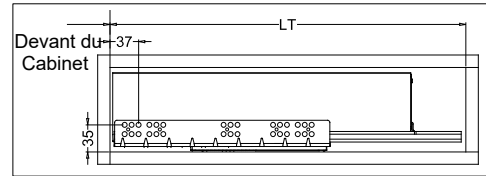
Fond du tiroir



* NL: Drawer Nominal Length

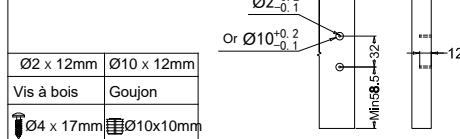
Dimensions d'installation (mm)

NL=Longueur nominale LT= Profondeur min. intérieur du cabinet LW=Largeur intérieur du cabinet

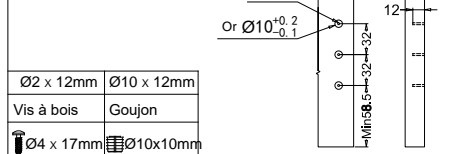


Perçage de la façade(mm)

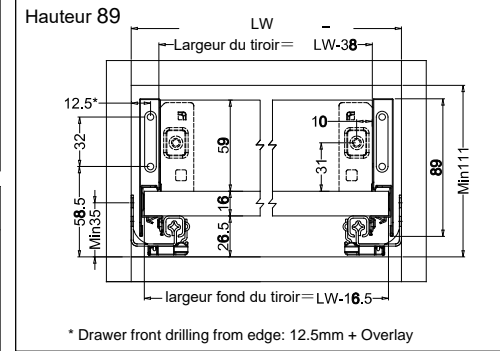
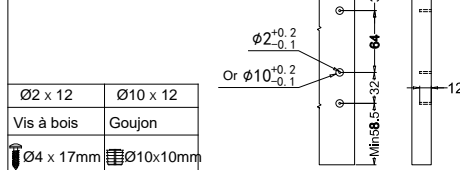
Hauteur 89



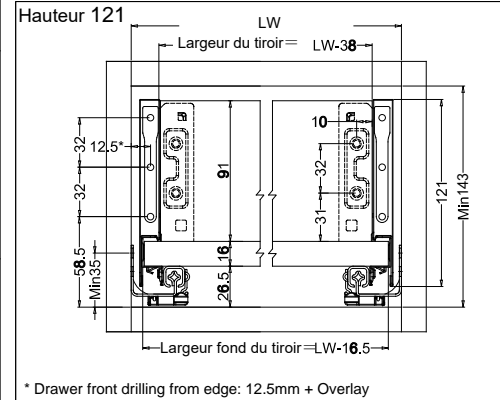
Hauteur 121



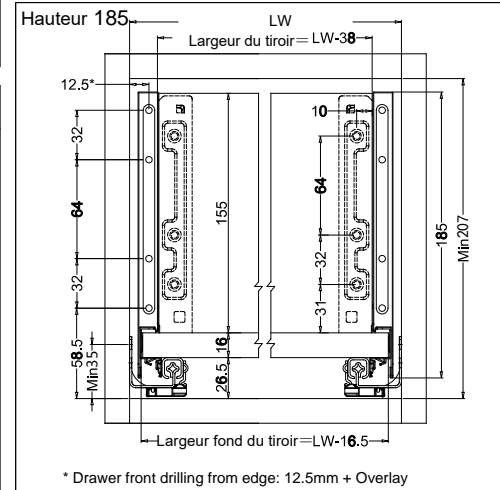
Hauteur 185



* Drawer front drilling from edge: 12.5mm + Overlay

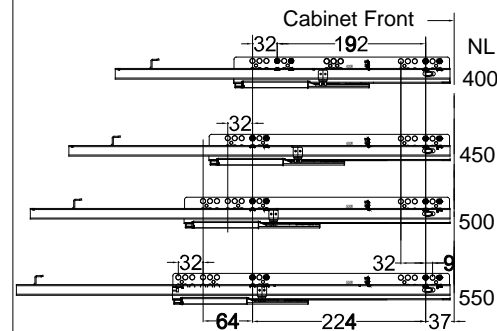


* Drawer front drilling from edge: 12.5mm + Overlay



* Drawer front drilling from edge: 12.5mm + Overlay

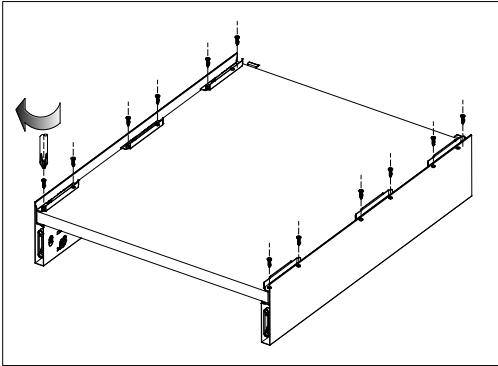
Trous de perçage sur coulisse



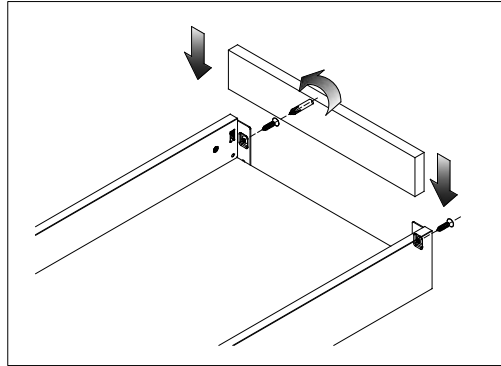


Tiroir OPTIMIZ-R - Assemblage

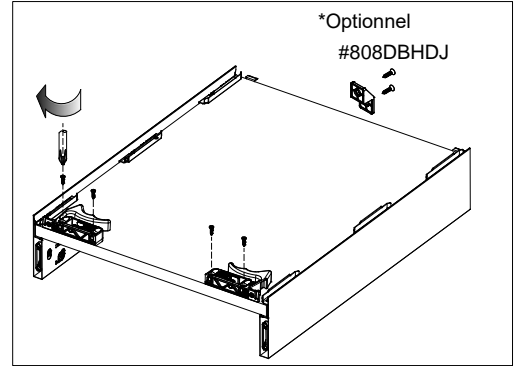
Assemblage du tiroir



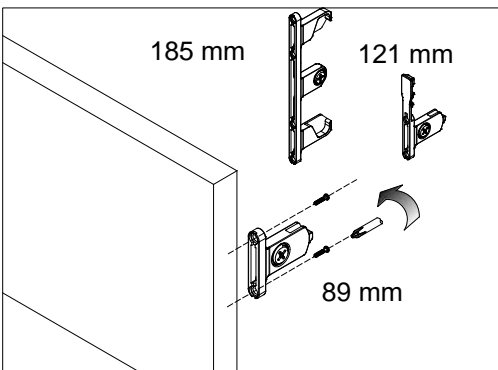
Assemblage du fond



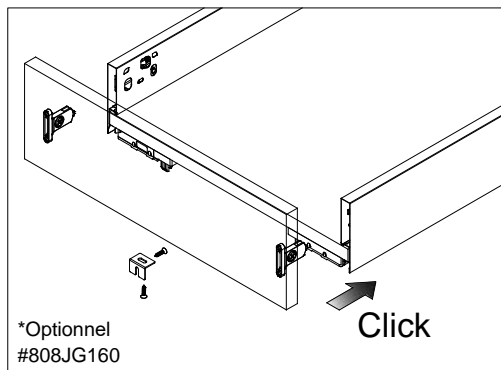
Assemblage du dos



Assemblage des dispositifs

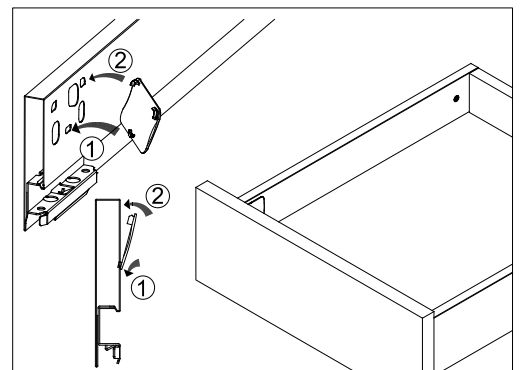


Assemblage de la façade

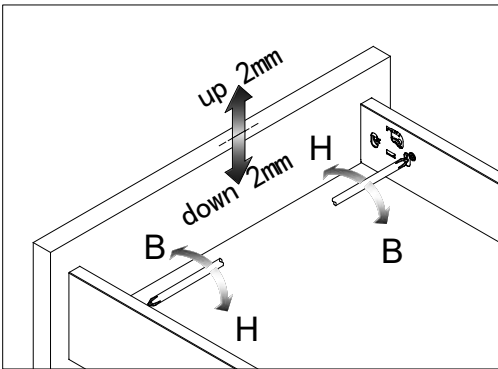


*Optionnel
#808JG160

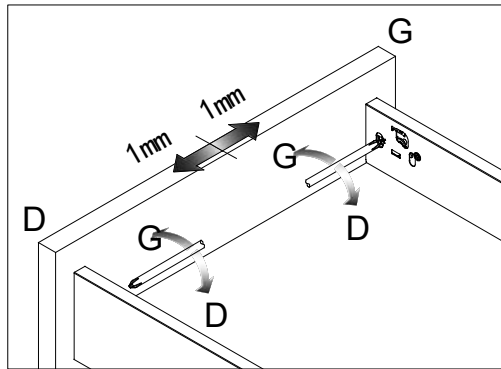
Click



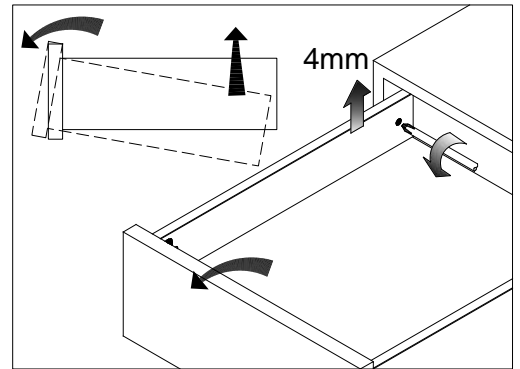
Ajustements de la façade



Ajustement haut / bas

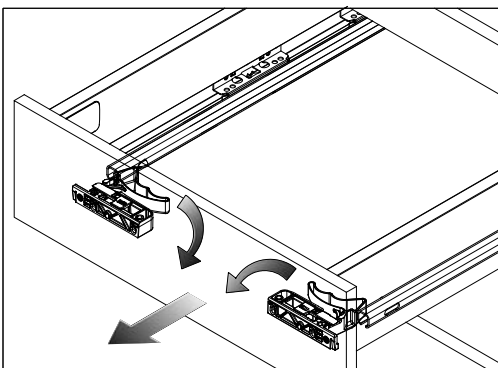


Ajustements Droite / Gauche

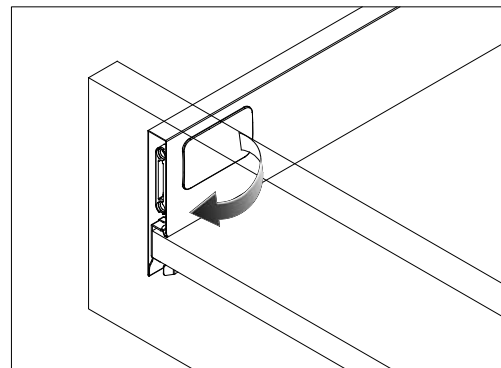


Ajustements en inclinaison

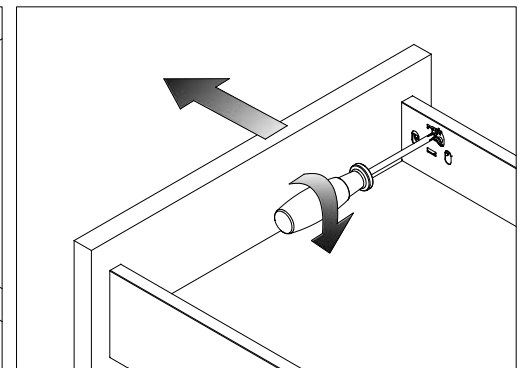
Démontage



Retirer le tiroir



Retirer le cache



Relâcher la façade