

Il prodotto deve essere smaltito separatamente dai rifiuti urbani consegnandolo ai centri di raccolta previsti dalla normativa in vigore. L'adeguata raccolta differenziata contribuisce ad evitare possibili effetti negativi sull'ambiente e sulla salute e favorisce il reimpiego e/o il riciclo dei materiali. Lo smaltimento abusivo comporta l'applicazione delle sanzioni amministrative previste dalla normativa vigente.

The product must be disposed of separately from urban waste, delivering it to the collection centres established by the prevailing standard. Adequate sorted waste collection contributes to preventing negative effects on the environment and health and favours reuse and/or recycling materials. Incorrect disposal of the product implies the application of the administrative sanctions envisaged by the prevailing regulation.

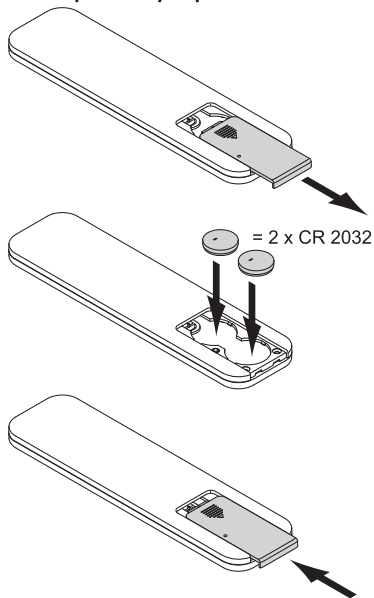


Die Leuchte muss getrennt vom Hausmüll entsorgt und entsprechend der geltenden Richtlinien, an den vorgesehenen Sammelstellen abgegeben werden. Die angemessene getrennte Sammlung trägt dazu bei, eventuelle negative Auswirkungen auf die Umwelt und die Gesundheit zu vermeiden und die Wiederverwendung und/oder das Recycling der Materialien zu begünstigen. Die unsachgemäße Entsorgung bringt die Anwendung administrativer Strafen mit sich, die in den geltenden Richtlinien vorgesehen sind.

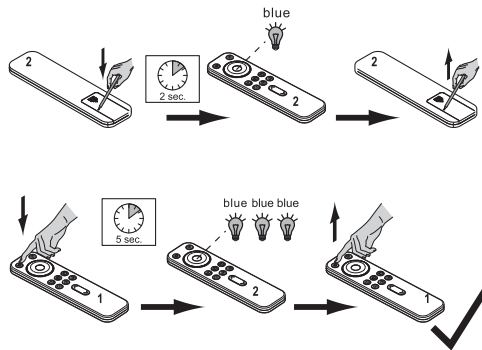
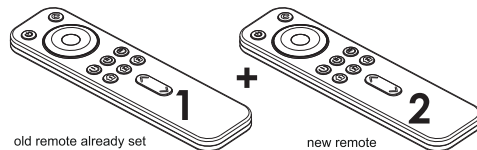
Le produit doit être collecté séparément et non jeté avec les déchets ménagers en le portant dans les déchetteries prévues par la réglementation en vigueur. Un tri sélectif approprié contribue à éviter des possibles effets négatifs sur l'environnement et sur la santé et favorise la réutilisation et/ou le recyclage des matériaux. L'élimination abusive entraîne l'application des sanctions administratives prévues par la réglementation en vigueur.

Se debe desechar el producto de forma separada de los residuos urbanos; se lo debe entregar en los centros de recolección previstos por la norma en vigor. La recolección diferenciada adecuada contribuye a evitar posibles efectos negativos en el medioambiente y en la salud y favorece la reutilización y/o el reciclaje de los materiales. Si se lo desecha en forma abusiva tendrá como consecuencia la aplicación de sanciones administrativas previstas por la normativa vigente.

Initial start-up battery replacement



2 remote for one control

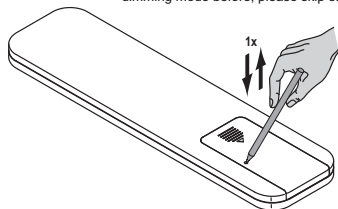


* If step 2 hasn't been followed after step 1, the remote 2 needs the initialization of address and function.
The function initialization is to set 3 channels as dimming mode.

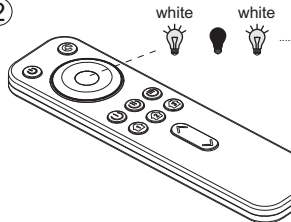
Mode selection(Dimming)

①

If the channel have already set in TW or RGB mode before, please follow step1&2,
If it is the first time to use this channel or set in dimming mode before, please skip step1&2



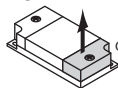
②



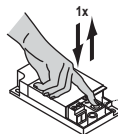
Remote control (Dimming)

Dimming receiver V17

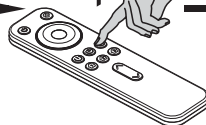
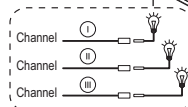
Example: select channel ②



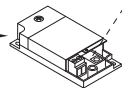
Output side



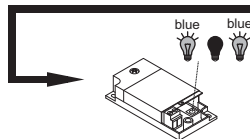
blue



Long press until blue signal disappears.



blue

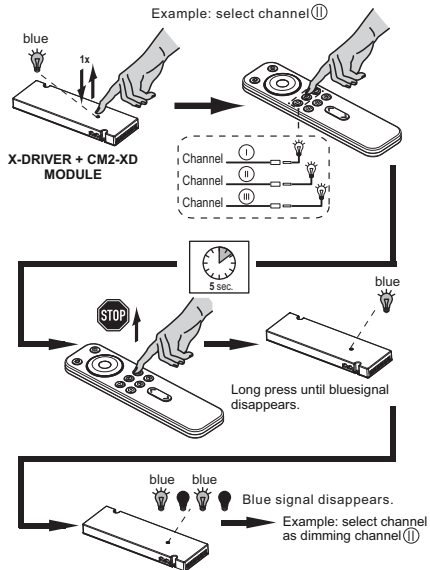


Blue signal disappears.

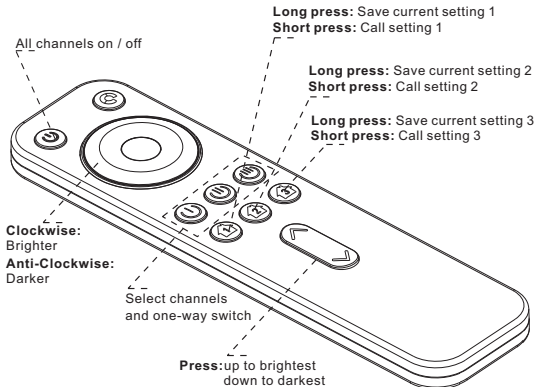
Example: select channel ② as dimming channel



Remote Control(Dimming)

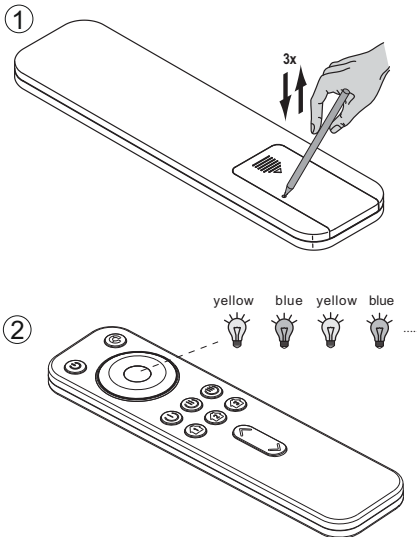


Functions(Dimming)



Mode selection TW

If the channel have already set in Dimming/RGB mode before, please follow step1&2. If it have already set in TW channel before, please skip step1&2.



Functions TW

Short press: Press for colour temperature change mode switch
Flash mode/fade mode

Flash mode: the lamp color temperature will flash from one to the other (warm, neutral, cool).

Fade mode: the lamp color temperature will fade gradually from one to the other.

Long press: Hold down this button and press "Dim button" for speed selection:

faster = + ↑

slower = + ↓

All channels
on / off

Long press: Save current setting 1

Short press: Call setting 1

Long press: Save current setting 2

Short press: Call setting 2

Long press: Save current setting 3

Short press: Call setting 3

Change colour

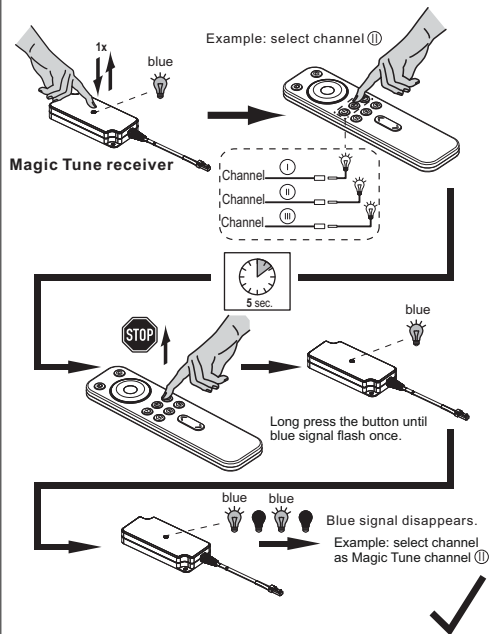
Select channels
and one-way switch

Dim button

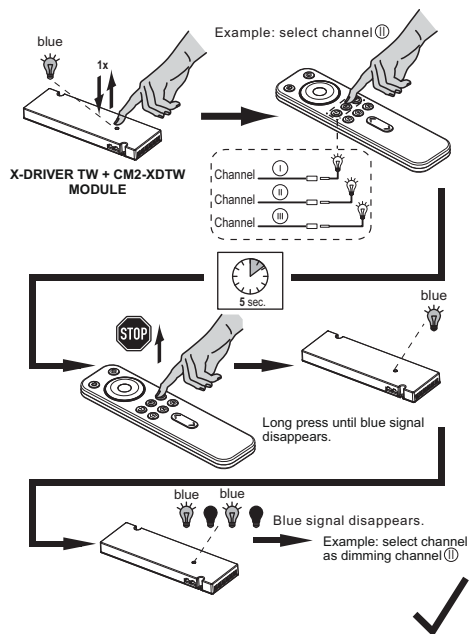
Long press: Dim brightness gradually

Short press: Dim brightness between 10 levels

Remote Control (Magic Tune)

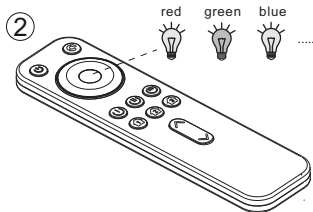
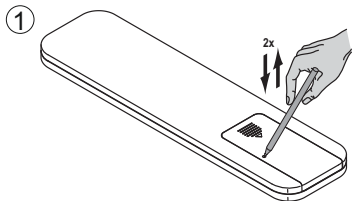


Remote Control (X-Driver TW)



Mode selection(RGB)

If the channel have already set in Dimming/TW colour mode before, please follow step1&2, If it have already set in RGB channel before, please skip step1&2.



Functions (RGB)

Short press: Press for colour change mode switch
Flash mode/fade mode

Flash mode: the lamp color will flash from one to the other (white, yellow, green, purple, blue and red).

Fade mode: the lamp will fade gradually from one to the other.

Long press: Hold down this button and press "Dim button" for speed selection:
faster = + ↑
slower = + ↓

All channels on / off

Long press: Save current setting 1

Short press: Call setting 1

Long press: Save current setting 2

Short press: Call setting 2

Long press: Save current setting 3

Short press: Call setting 3

Change colour

Select channels and one-way switch

Dim button

Long press: Dim brightness gradually

Short press: Dim brightness between 10 levels

Remote Control (Magic color RGB)

