

FORMULA

H = Height plate
 K = Drilling distance
 D or A = Overlay

K=4
 H=0, OL=18(±0.5)mm
 H=2, OL=16(±0.5)mm
 H=4, OL=14(±0.5)mm

H = Hauteur plaque
 K = Distance de perçage
 D or A = Recouvrement

Appliquées
 Full Overlay

$$H = 14 + K - D$$

D \ K	3	4	5	6	7
H 0	17	18	19	20	21
H 2	15	16	17	18	19
H 4	13	14	15	16	17

Semi-appliquées
 Half Overlay

$$H = 4 + K - D$$

D \ K	3	4	5	6	7
H 0	7	8	9	10	11
H 2	5	6	7	8	9
H 4	3	4	5	6	7

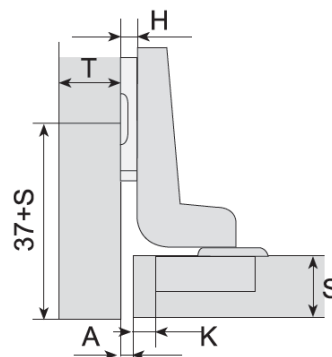
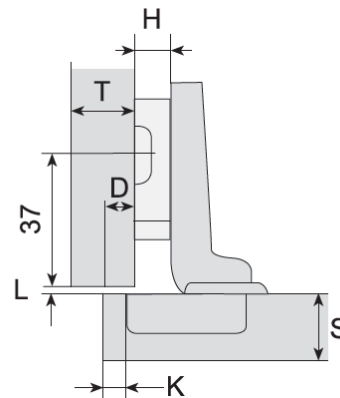
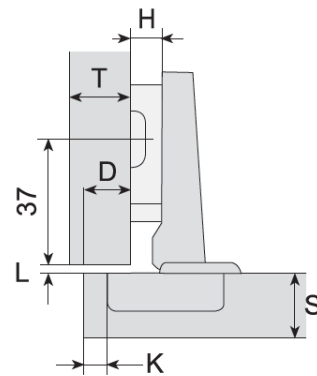
Encastrées
 Inset

$$H = -4 + K - A$$

A \ K	3	4	5	6	7
H 0	1	0	-1	-2	-3
H 2	3	2	1	0	-1
H 4	5	4	3	2	1

Tableau des ajustements
 Adjustment chart

Profondeur Depth	-1 mm/+3 mm
Vertical Vertical	-2 mm/+2 mm
Horizontal Horizontal	0 mm/+5 mm



INFORMATION DE PERÇAGE DRILLING INFORMATION

Grand-recouvrement/ Full overlay

A : 37 mm

B : 32 mm

C : 45 mm

Semi-appliqué/ Half overlay

A : 37 mm

B : 32 mm

C : 45 mm

Encastré/ Inset

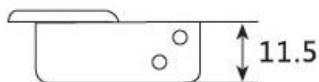
A : 37 mm + Épaisseur du matériel
Thickness of the material

B : 32 mm

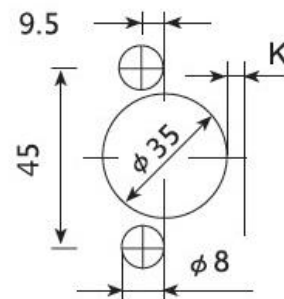
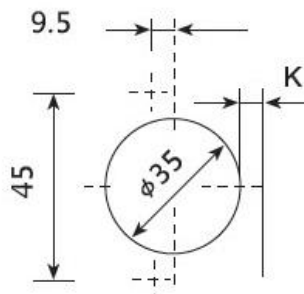
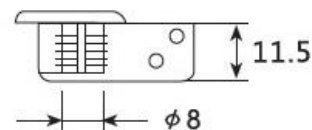
C : 45 mm

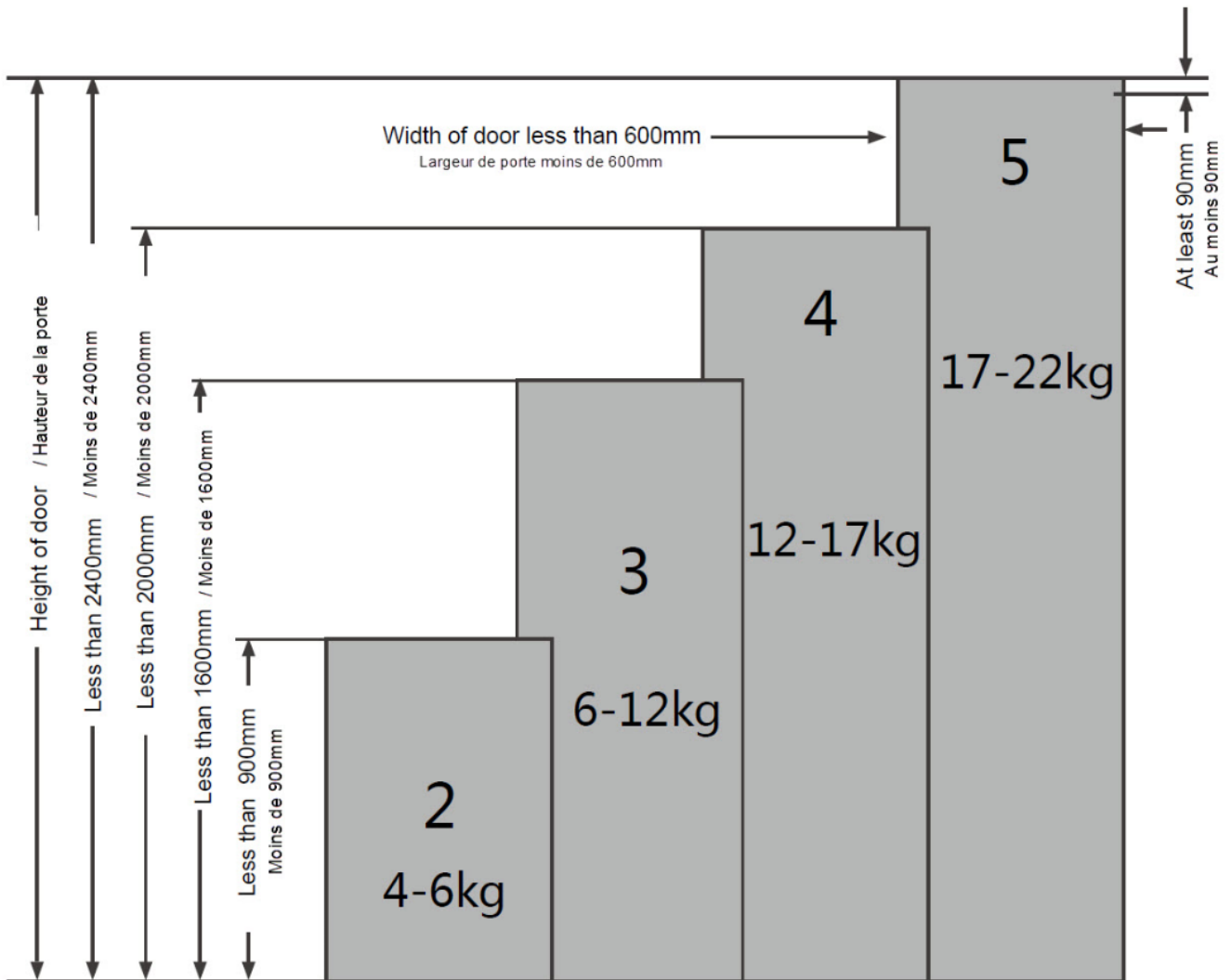


À visser/Screw-In



Goujon/Dowel




Caractéristiques et avantages :

- Excellente qualité
- Ajustement à came pour profondeur et horizontal sur le bras
- Certification BIFMA X5.9
- Montage facile

Features and Benefits:

- Excellent Quality
- Cam Adjustments for Depth and Horizontal on Hinge Arm
- BIFMA X5.9 Certification
- Clip-On/Easy Mounting