



Frames are available in 1 bin or 2 bins models and in 3 finishes; silver grey, chrome and anthracite.



Bins available in 36 or 52Qt and in white or grey finish



Lids available in White or Grey. Fits on both 36 and 52 Qt bin

Bottom mount recycling center with a large capacity in a narrow space. Can be equipped with a push to open (PTO) device.



Advantages

- Can be equipped with a push to open device (PTO) for easy opening when you have your hands full. A light touch on the door activate the opening device.
- Elegant side railing that keeps bins in place during opening and closing. Sold separately.
- Frames are available in chrome, silver grey and anthracite finishes.
- Easy mounting on the bottom of the cabinet with only few screws.
- Door mounting brackets with adjustment in all directions.
- Suitable for cabinets with overlay or inset doors.
- Full extension undermount slides equipped with a soft closing device.
- Offered in single bin version or double bin version, bins sold separately.
- Bins of 36 qt and 52 Qt and lids are available in white and grey color.
- The single bin version offers extra storage space at the back, ideal to store cleaning products
- Load capacity of 100 lbs..

For a complete set, order:

- 1 Frame for 1 or 2 bins according to your needs
- 1 or 2 bins
- 1 or 2 lids
- 1 PTO system



Frame for 1 bin

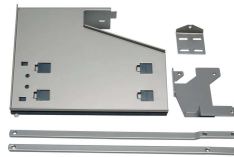


Frame for 2 bins

Frames

Description	Chrome	Grey	Anthracite	Min. opening Width	Min. opening Depth	Min. opening Height
FRAME REC.CNTR.SINGLE	61010140	61010100	61010906	FF: 11 1/2" (292mm) FL: 12 9/16" (319mm)	22 3/8" (568mm)	19 1/4" (489mm)
FRAME REC.CNTR.DOUBLE	61020140	61020100	61020906	FF: 15" (381mm) FL: 15 5/8" (397mm)	22 3/8" (568mm)	19 1/4" (489mm)

Bins, lids and PTO systems



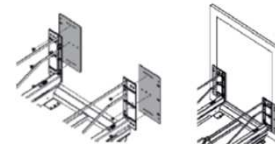
PTO push to open system for an hand free opening. A light pressure on the door activate the PTO system for an automatic opening.

No.	Description	Product Width	Product Depth	Product Height
51012100	BIN 36 QT.GREY	14 1/2" (368mm)	11" (279mm)	18" (457mm)
5101230	BIN 36 QT. WHITE	14 1/2" (368mm)	11" (279mm)	18" (457mm)
51052100	BIN 52QT. GREY	14 1/2" (368mm)	11" (279mm)	23" (584mm)
5105230	BIN 52 QT. WHITE	14 1/2" (368mm)	11" (279mm)	23" (584mm)
51152030	LID WHITE	14 1/2" (368mm)	11" (279mm)	
51152100	LID GREY	14 1/2" (368mm)	11" (279mm)	
61015100	PTO SYSTEM SILVER			
61015906	PTO SYSTEM ANTHRACITE			

Large door brackets

Especially suitable for doors exceeding 21"(533mm) in width and for shaker door type.

Individually packed, 2 are needed per set



No.	Description	Product Width	Product Depth	Product Height
25079100	LARGE DOOR BRACKETS SILVER	3 5/16" (100mm)	1/8" (3mm)	7 7/8" (200 mm)