

Sustainable Design: Gemstone sinks are produced using state-of-the-art Acrylic modified resins containing 15% Post-Consumer recycled materials and another 5.5% rapidly renewable bio-oils. For more than 15 years, Gemstone has been committed to producing the best product in the most responsible way. ***Gemstone sinks are made in the USA!***



LEED Credits:

MR4.1/4.2—Recycled Content

MR6—Rapidly Renewable Materials

MR 5.1—Regional Materials

A. Product data indicating that materials are regionally manufactured and within 500 miles of project site.

Dual Listing: Gemstone sinks are dual listed by NAHB and UL in the US and in Canada meeting and exceeding all ANSI and CSA standards for solid surface sinks.



Universal Design: Gemstone is committed to products with universal acceptance. Gemstone produces a complete line of sinks that can be used in any environment, commercial or residential. Gemstone is the leading solid surface sink manufacturer of Universal Designed products. Visit www.gemstoness.com for sink specifications.



1812-VO

18" x 12 3/4" x 5" deep Vanity Bowl
(integral overflow optional)



2916-UD

29 1/2" x 16" x 5 1/2" deep
Kitchen Sink

Leading Designs for Healthcare: Gemstone is the leading solid surface manufacturer for healthcare sinks and shapes. With more than 50 sink designs available, Gemstone listens to leading healthcare professionals and has added new shapes each year as a result. For inquiries regarding new designs or to request a design, please e-mail sales@gemstoness.com. Lavatories are available in both integrated overflow and non-overflow models.



1514-VO (V)

15 1/4" x 13 7/8" x 5 1/4" deep Vanity Bowl
(integral overflow optional)



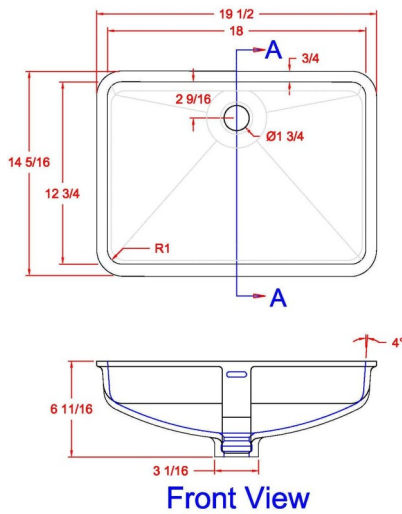
2213-VO (V)

22 1/2" x 12 1/2" x 6 1/8" Baby Bath
(integral overflow optional)

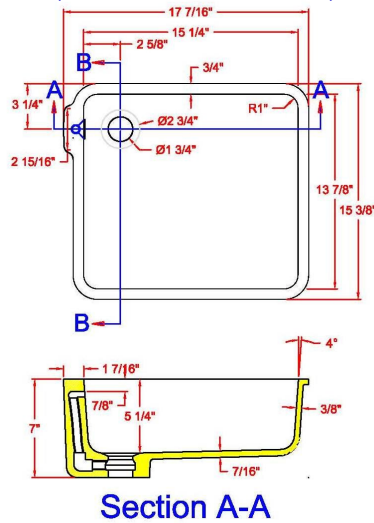


New Sink Drawings. Please check with all local codes prior to installation.

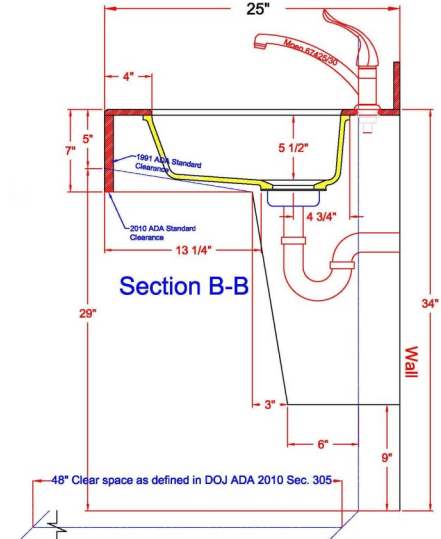
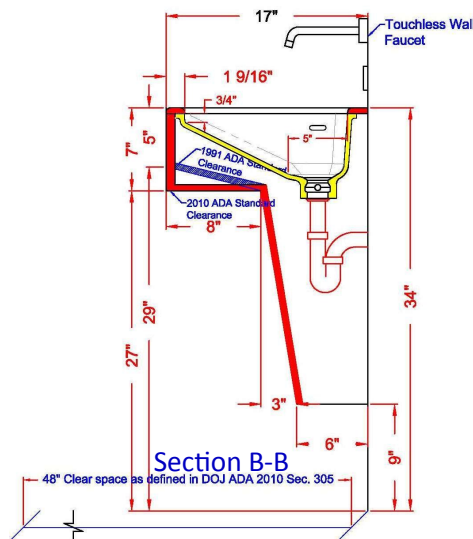
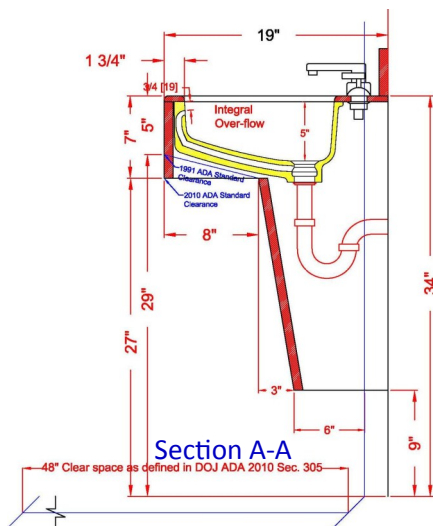
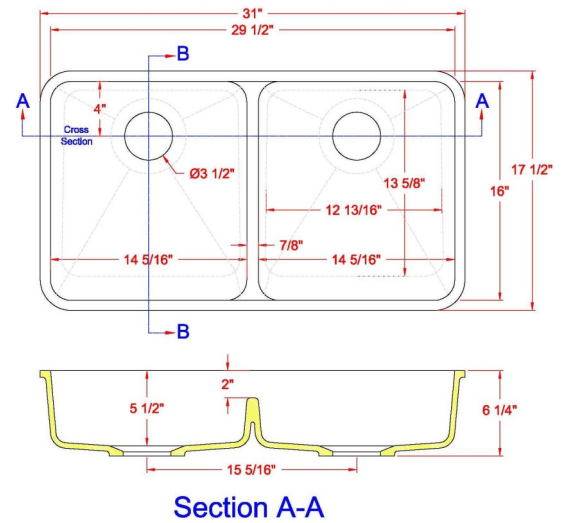
1812-VO
(Non-Overflow Model Available)



1514-VO
(Non-Overflow Model Available)



2916-UD



2213-VO Baby Bath
(Non-Overflow Model Available)

