

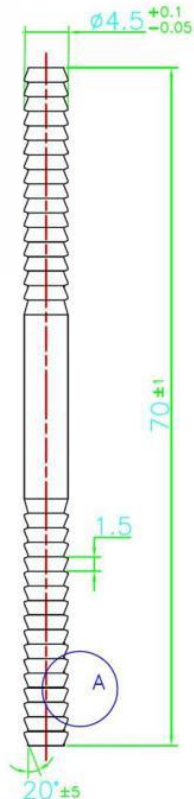
Door Connector 4.5 mm x 70 mm with Plastic Washer 3 mm x 9 mm



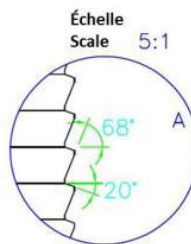
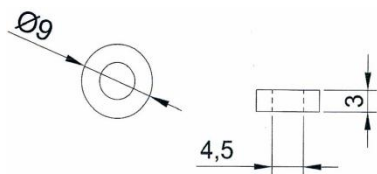
Product No. # MP194102G (1000 units/Box)

Product No. # CP194102G (100 units/Bag)

Connector Specification



Washer Specification



Suggested Product: BSTI2137

Product Description:

70 mm long steel pin with zinc plated finish, used to connect two doors or a door and drawer front together to form a hidden joint. Useful in applications where a drawer box cannot be fitted e.g. a corner unit.

Important Information:

When used, the plastic washer should be placed at the center of the door connector (see photo above).

- Washer Thickness: 3mm
- Washer Diameter: 9mm
- Material and color of the washer: White plastic.
- Door Connector drilling hole: 4mm

Included Products:

- 1 Zinc plated finish door connector
- 1 White plastic washer

MP194102G	Application	Diametre	Internal Diameter	Hole Diameter	Length	Thickness	Material	Finish
Connector	Furniture Assembly	4.5mm	N/A	4mm	70mm	4.5mm	Steel	Zinc Plated
Washer		9mm	4.5mm	N/A	N/A	3mm	Plastic	White