

LIBRA BS APPLICATIONS

BENEFITS OF LIBRA BS HANGING SYSTEM:

- Vertical and in-depth adjustments, with integrated locking of the cabinet, can be easily and smoothly carried out from the inside.
- The hanging system is never interfering with the slides for drawers thanks to the slim side bracket wings.
- Absolutely no mills, nor grooves required on the side panels.

In the **current absence of a unifying European norm** which sets the standards for testing procedures aimed at defining capacity loadings of hanging systems conceived for suspended base units, we Italiana Ferramenta have simulated some of the most critical scenarios. The following simulations are meant to give our customers valid reference points concerning cabinet dimensions, weights, recommended loading capacity even when loaded drawers are opened. **The reported data, empirically obtained, exclusively refer to the constructions and examples shown, correctly positioned and assembled.**

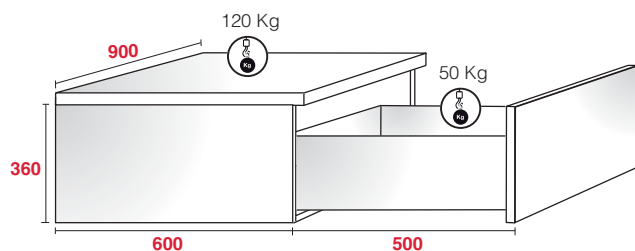
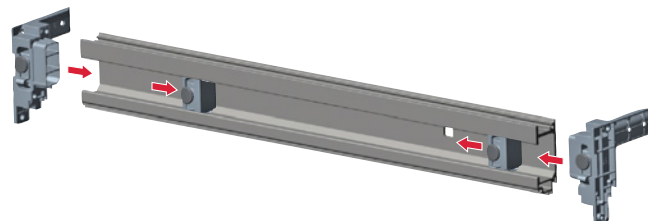
The customer must ensure that the wall is of suitable quality and structure.

Other important factors to be taken into consideration are determined by:

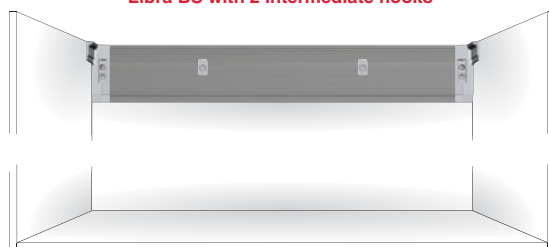
- the type of side panel, the actual thickness and the material used.
- the type and dimensions of the screws used.
- the actual positioning, depth and width of the groove milled for the back side installation.
- the capacity loading of the drawer slides used as well as the actual construction of the drawer.

We always recommend to test a complete cabinet.

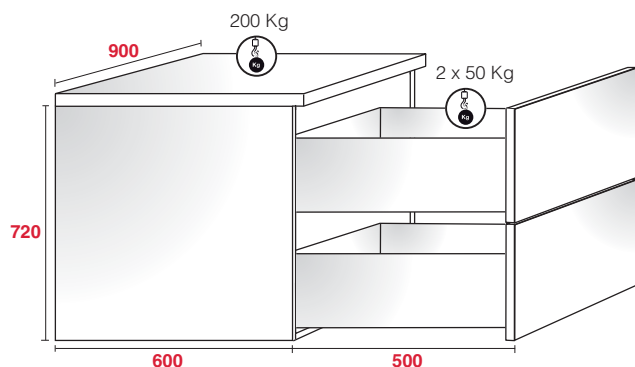
For cases which differ from the ones reported, please contact us.



Libra BS with 2 intermediate hooks



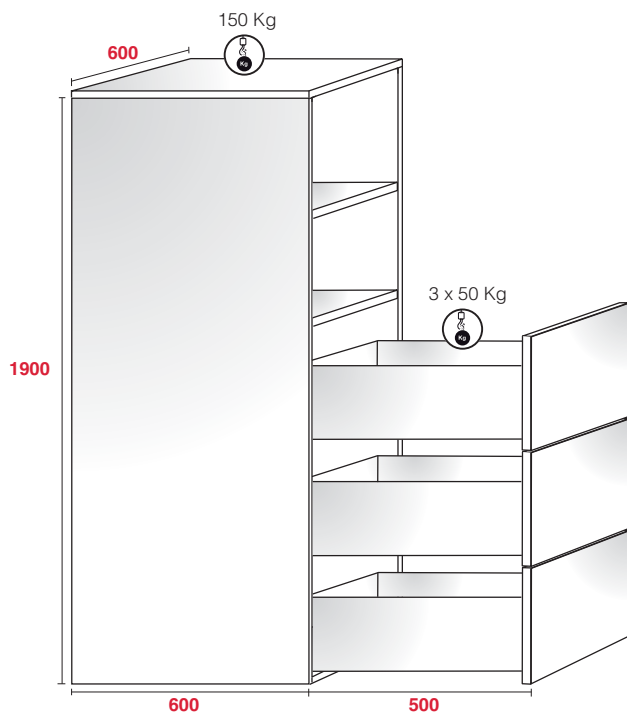
The reported data, empirically obtained, exclusively refer to the constructions and examples shown, correctly positioned and assembled.



Libra BS with 2 intermediate hooks



The reported data, empirically obtained, exclusively refer to the constructions and examples shown, correctly positioned and assembled.

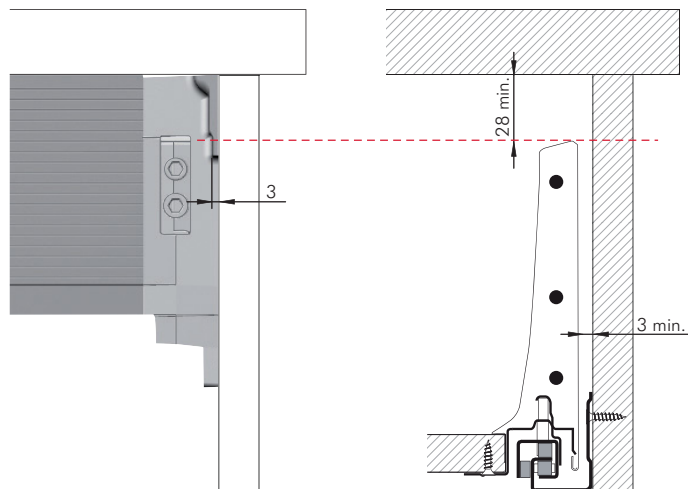


Libra BS with 1 intermediate hook





The hanging system is never interfering with the slides for drawers thanks to the slim side bracket wings.

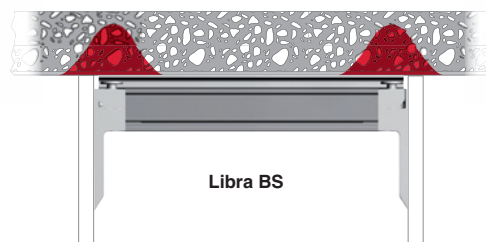


Easy access to the adjustments

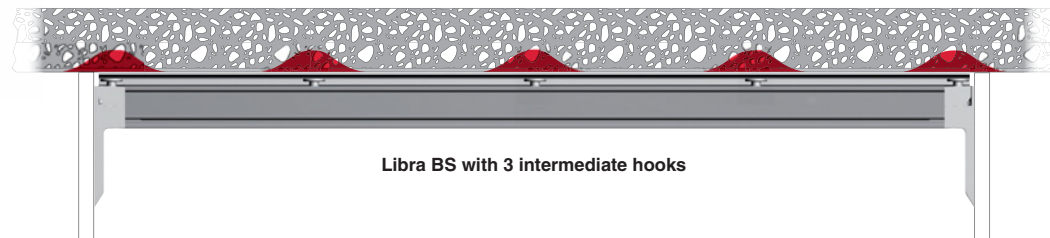
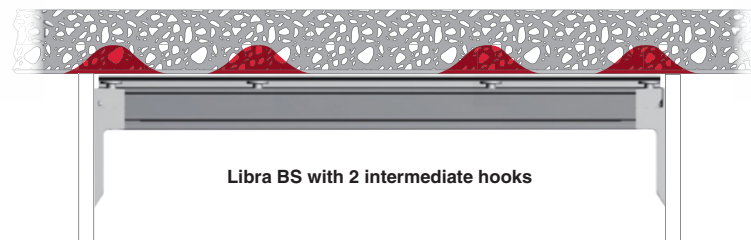
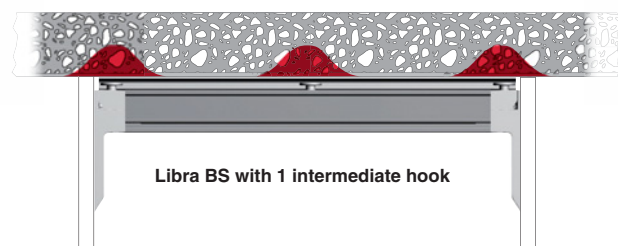


The slim side bracket makes the use of tools very easy and comfortable as there is plenty of space between the side and the allen wrench.

 = STRESS INTENSITY LEVEL ON THE WALL



By adding intermediate hooks to Libra BS, the capacity loading is more evenly distributed, thus sensibly reducing the stress intensity level on the wall.



SUGGESTED COMBINATIONS:

CABINET WIDTH (mm)	INTERMEDIATE HOOK
450	-
500	-
600	1
700	1
800	2
900	2
1000	2
1100	2
1200	3
1500	3

LIBRA BS

LIBRA BS is the innovative hanging system for suspended kitchen base units which require big capacity load as well as bumping loads.

LIBRA BS offers the customer the possibility to several hanging points on the wall, so that the load on every single wall plug is sensibly reduced, thus minimizing the risk of coming out of the wall.

A higher security standard is also guaranteed by the robustness of the wall bar, which, thanks to its thickness, gives the construction the highest stability thanks to its large supporting surface.

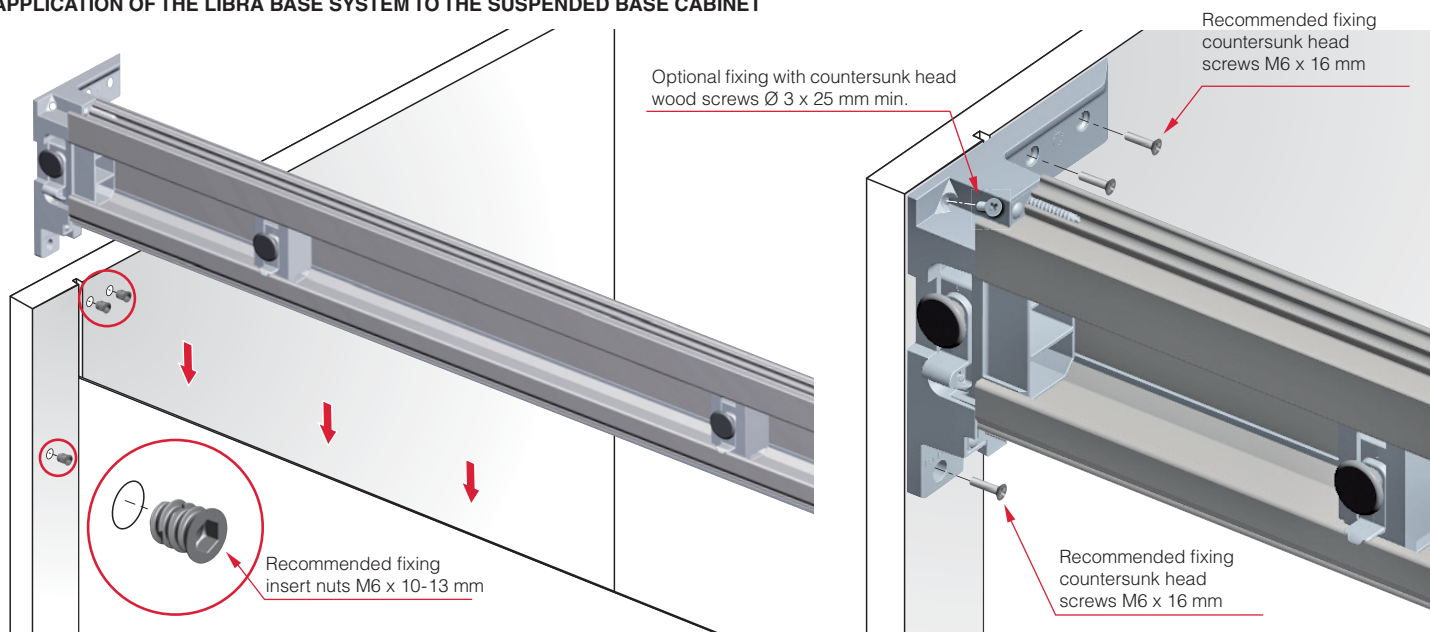
From a security point of view, the placement of the fixing holes to the wall has been optimized. **LIBRA BS** is easily adjustable in vertical and in depth even when the base unit is already fixed to the wall.

To further improve the safety of **LIBRA BS**, the in-depth adjustment automatically activates the anti-turnover device.

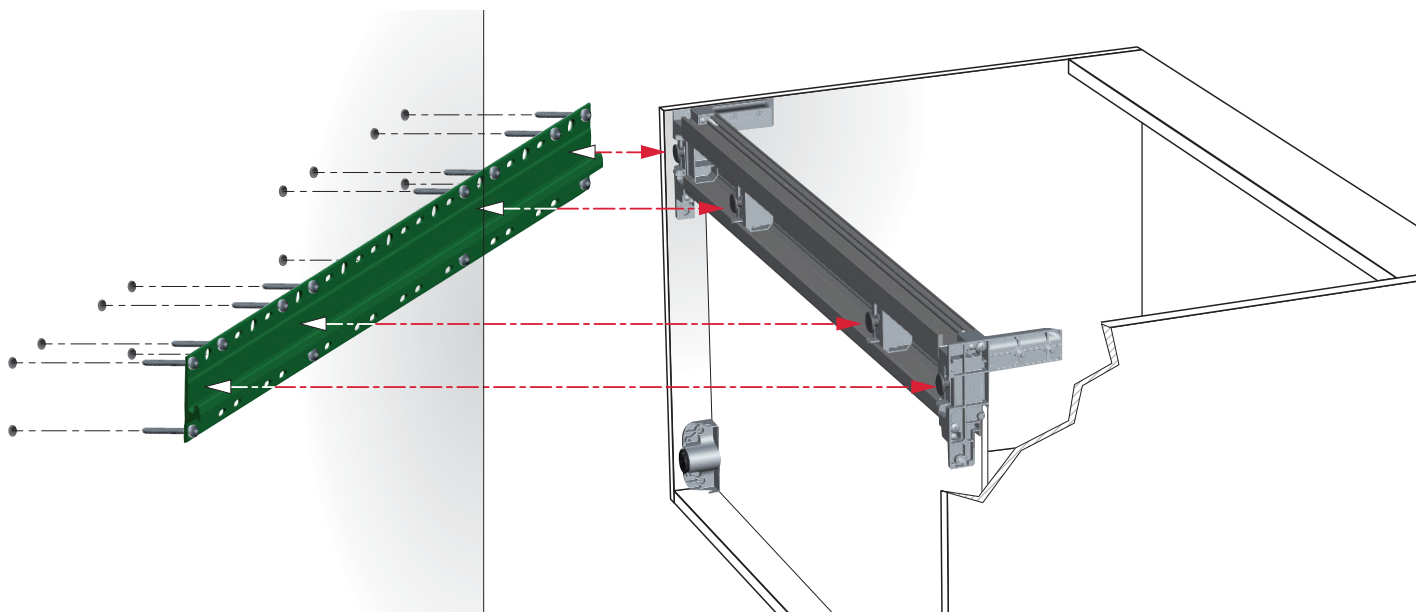
LIBRA BS is the ideal system for very high loads, even with very deep constructions and particularly large and heavy drawers.



APPLICATION OF THE LIBRA BASE SYSTEM TO THE SUSPENDED BASE CABINET



WALL BAR INSTALLATION AND CABINET HANGING

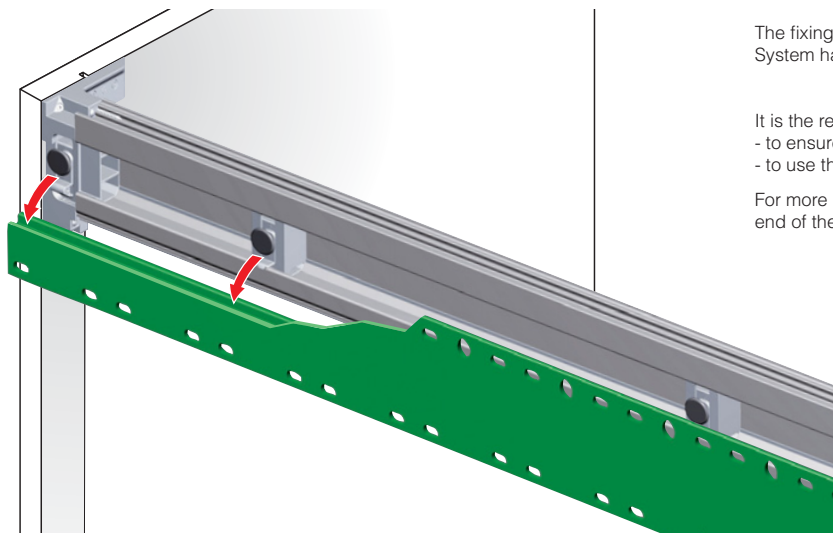


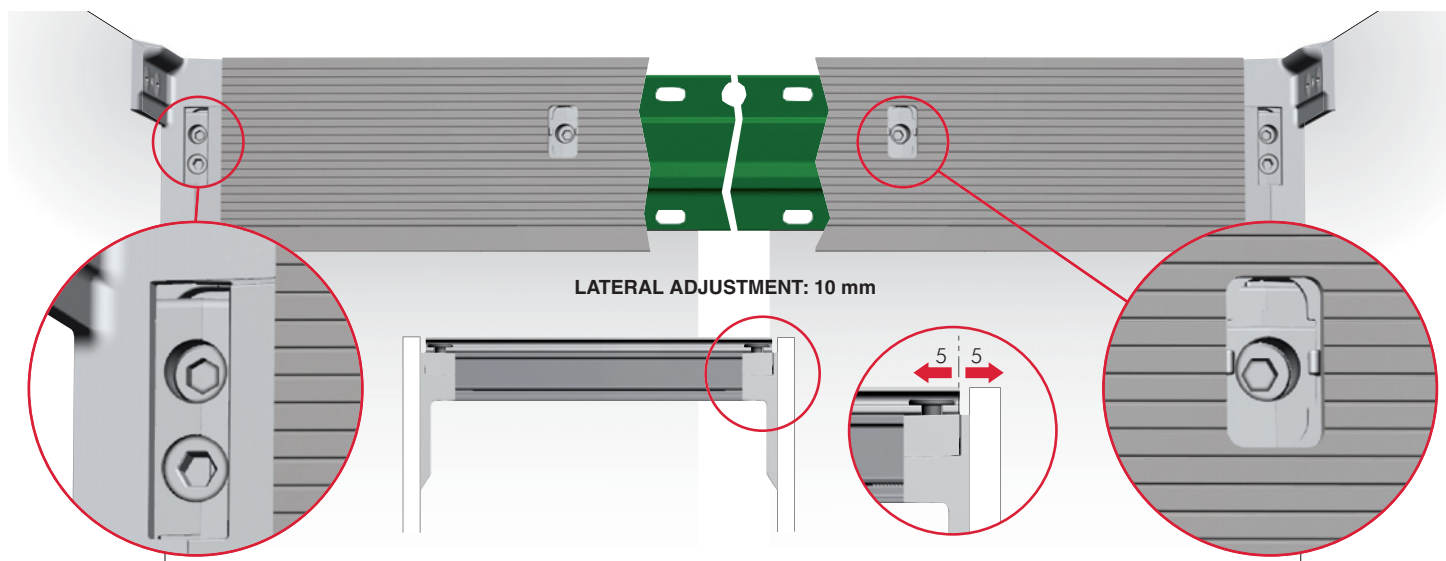
The fixing screws for the wall bar have to be aligned with the LIBRA Base System hanging hooks.

It is the responsibility of the customer:

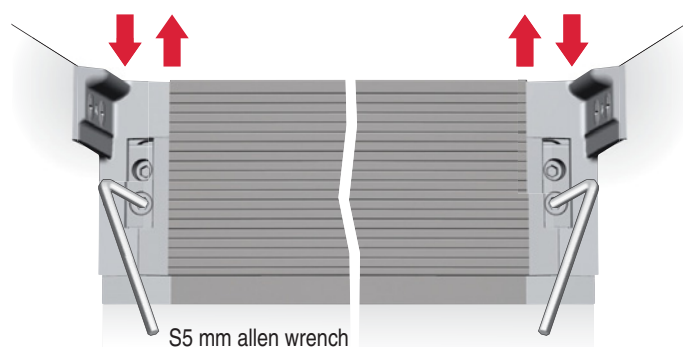
- to ensure that the wall is of a suitable quality to hold the unit fixing in place.
- to use the proper hardware fittings according to the construction of the wall.

For more specific information, please refer to the WARNINGS section at the end of the catalogue.



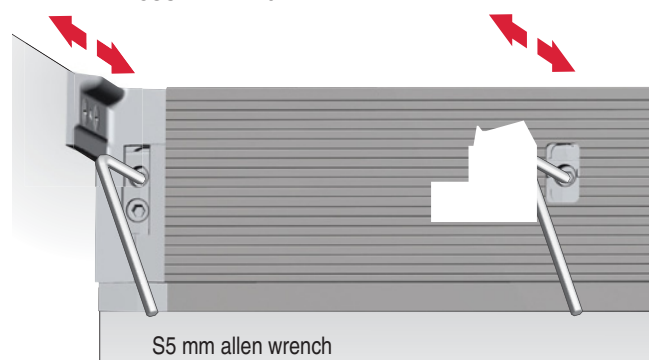


VERTICAL ADJUSTMENT: 15 mm



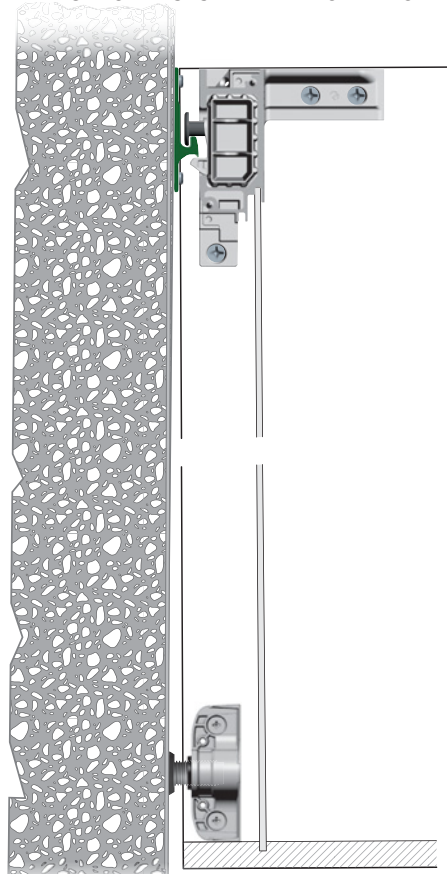
Vertical adjustment to be carried out through both side hangers. The intermediate hooks consequently follow the vertical adjustment carried out through the side hangers.

IN-DEPTH ADJUSTMENT: 10 mm

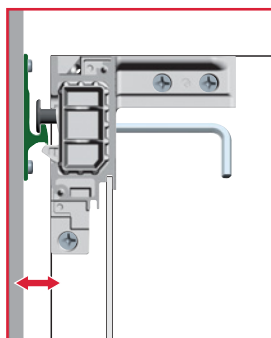


In-depth adjustment to be carried out progressively through side hangers and intermediate hooks.

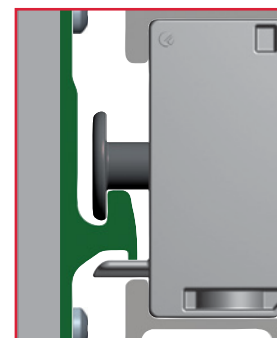
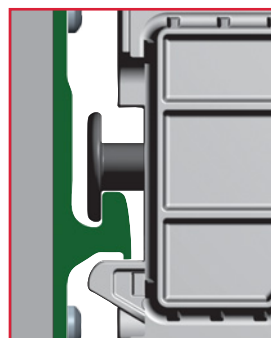
ANTI-TURNOVER SYSTEM AND INCLINATION ADJUSTMENT



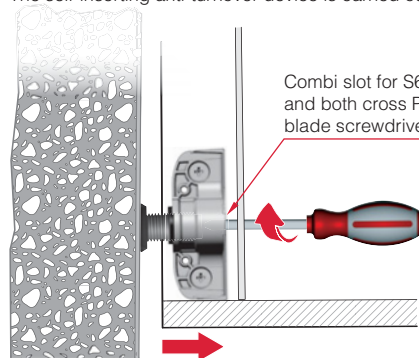
SIDE HANGERS



INTERMEDIATE HOOKS

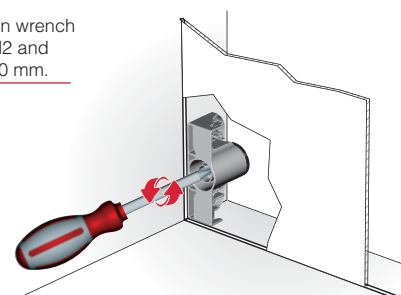


The self-inserting anti-turnover device is carried out after 6 mm of in-depth adjustment.

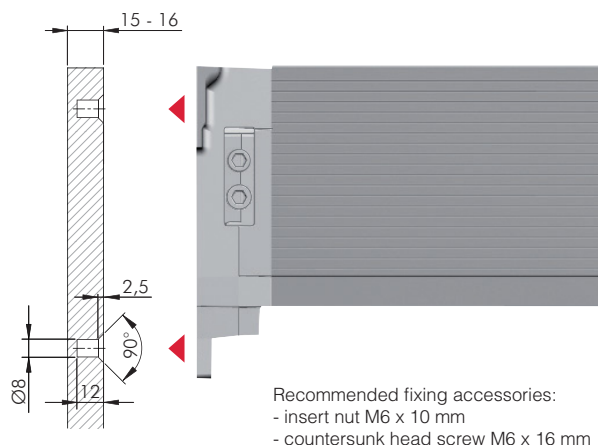


Inclination adjustment if required

- For details refer to section "LIBRAS BS LEVELLER"

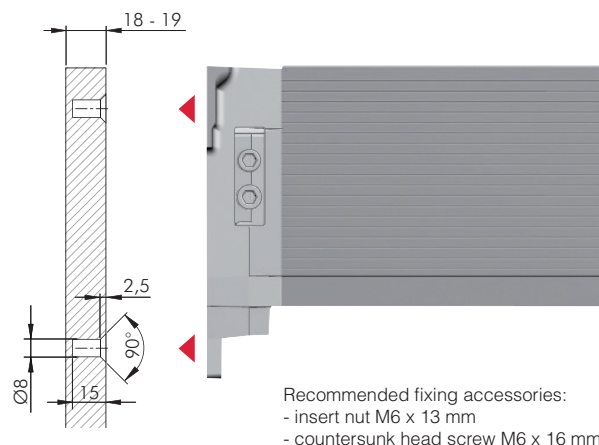


SIDE PANEL 15 - 16 MM THICK



Recommended fixing accessories:
- insert nut M6 x 10 mm
- countersunk head screw M6 x 16 mm

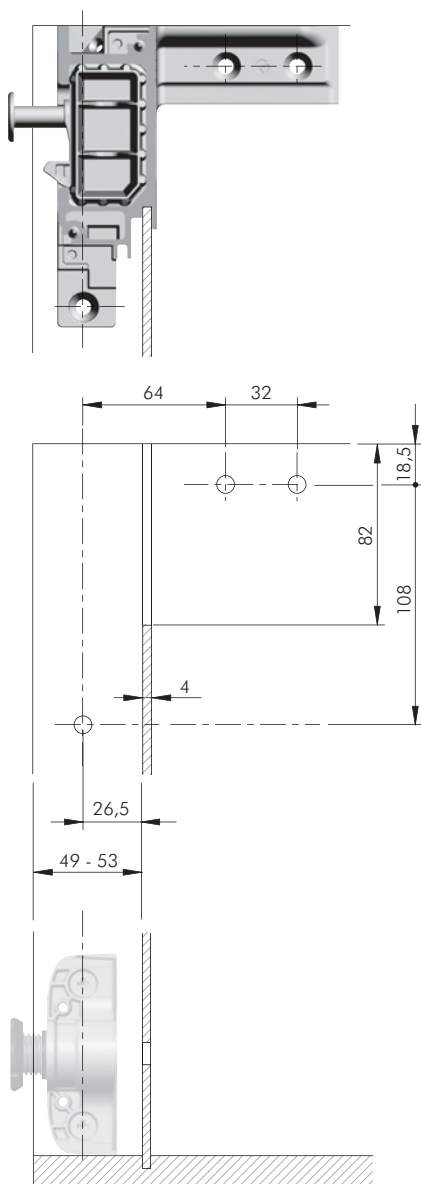
SIDE PANEL 18 - 19 MM THICK



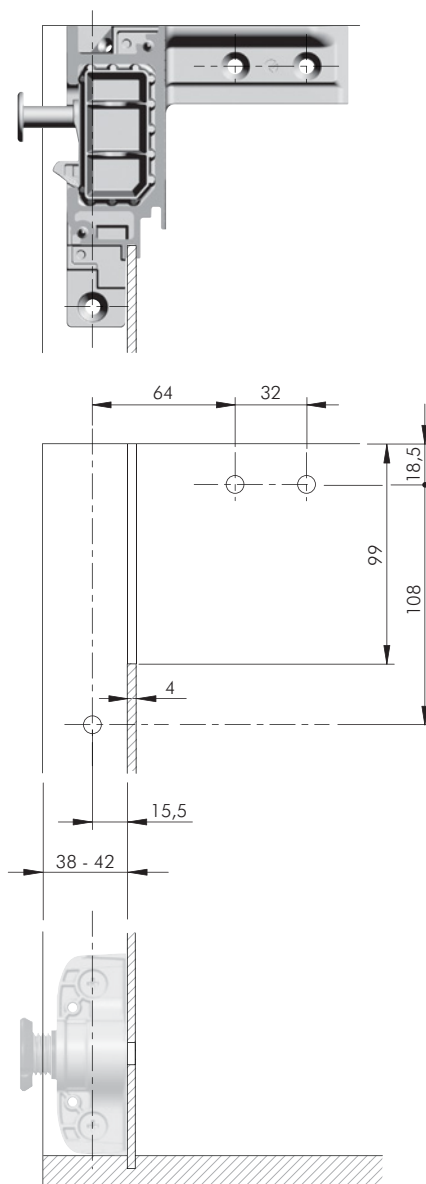
Recommended fixing accessories:
- insert nut M6 x 13 mm
- countersunk head screw M6 x 16 mm

SIDE PANEL DRILLING AND MILLING FOR VARIOUS BACK PANEL DIMENSIONS

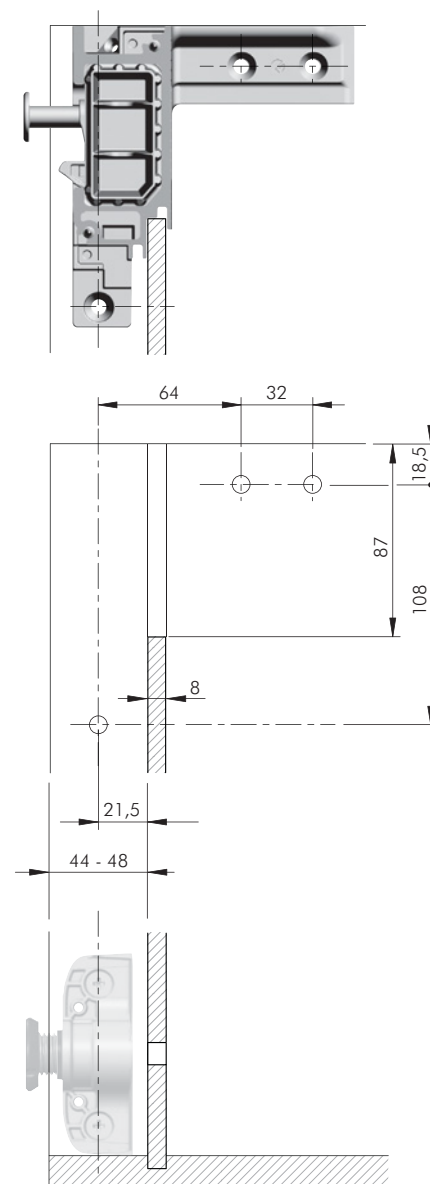
BACK PANEL WOOD THICKNESS 4 MM
PLACED IN THE HIGHER SLOT



BACK PANEL WOOD THICKNESS 4 MM
PLACED IN THE LOWER SLOT

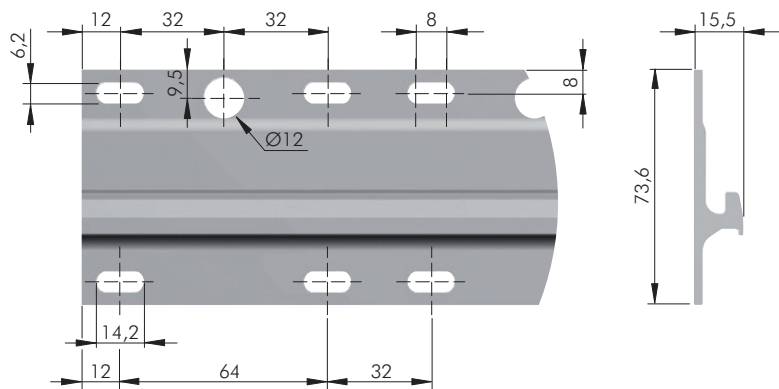
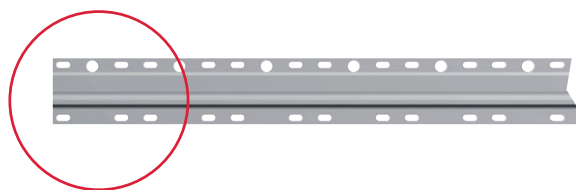


BACK PANEL WOOD THICKNESS 8 MM



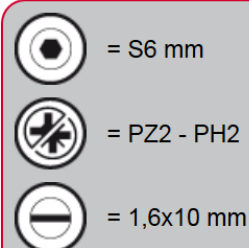
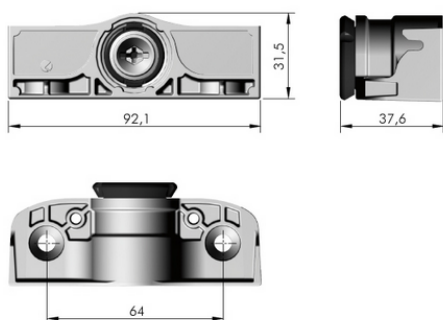
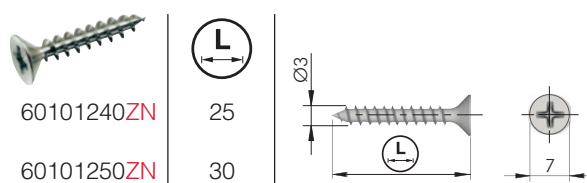
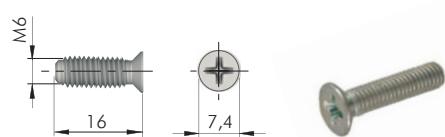
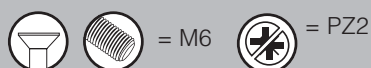
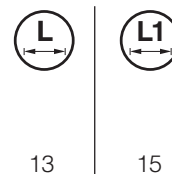
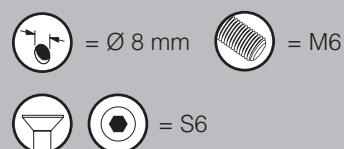
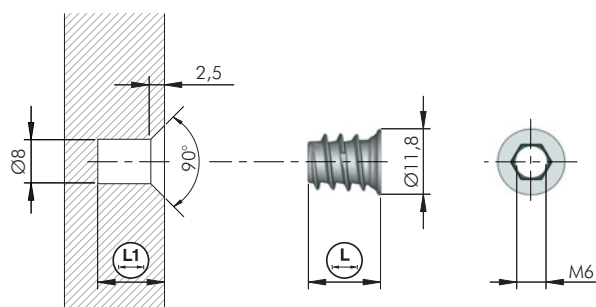


WALL BAR DETAIL - 65720002G



NOTE:
LIBRA BS WALL BAR is supplied 10 mm shorter than LIBRA BS for lateral adjustment.

LIBRA BS - SET OF HARDWARE



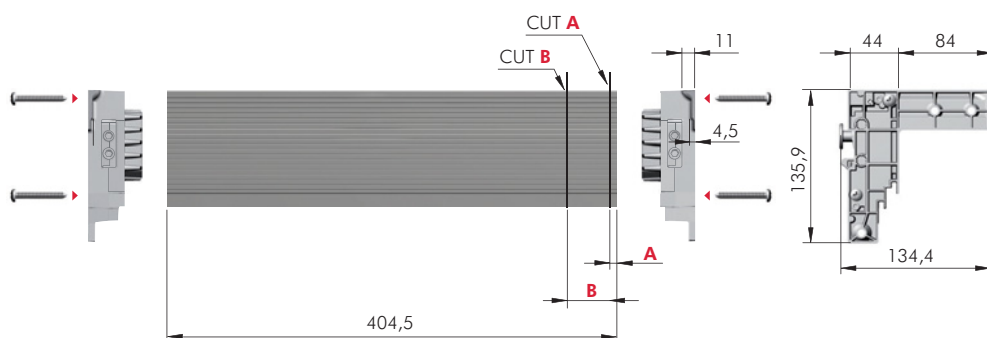
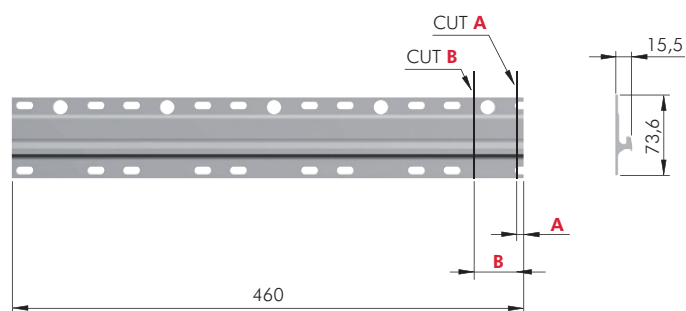
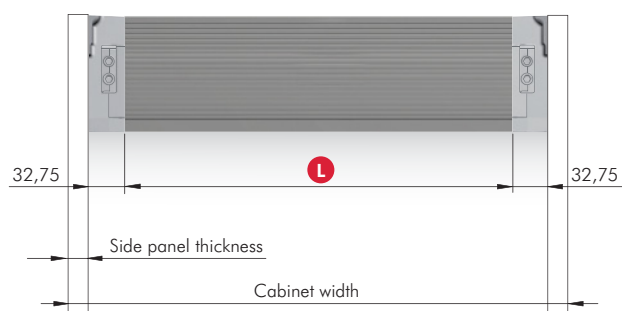
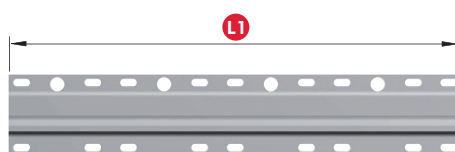
LIBRA BS WITH BOTH END ELEMENTS DISMOUNTED FOR CABINET 450 - 500 MM WIDE

TO BE CUT BY THE CUSTOMER

Side panel thickness	Cabinet width					
	450			500		
	B	L	L1	A	L	L1
15 mm	50	354,5	410	0	404,5	460
16 mm	52	352,5	408	2	402,5	458
18 mm	56	348,5	404	6	398,5	454
19 mm	58	346,5	402	8	396,5	452

L 6582002G

L1 6572002G





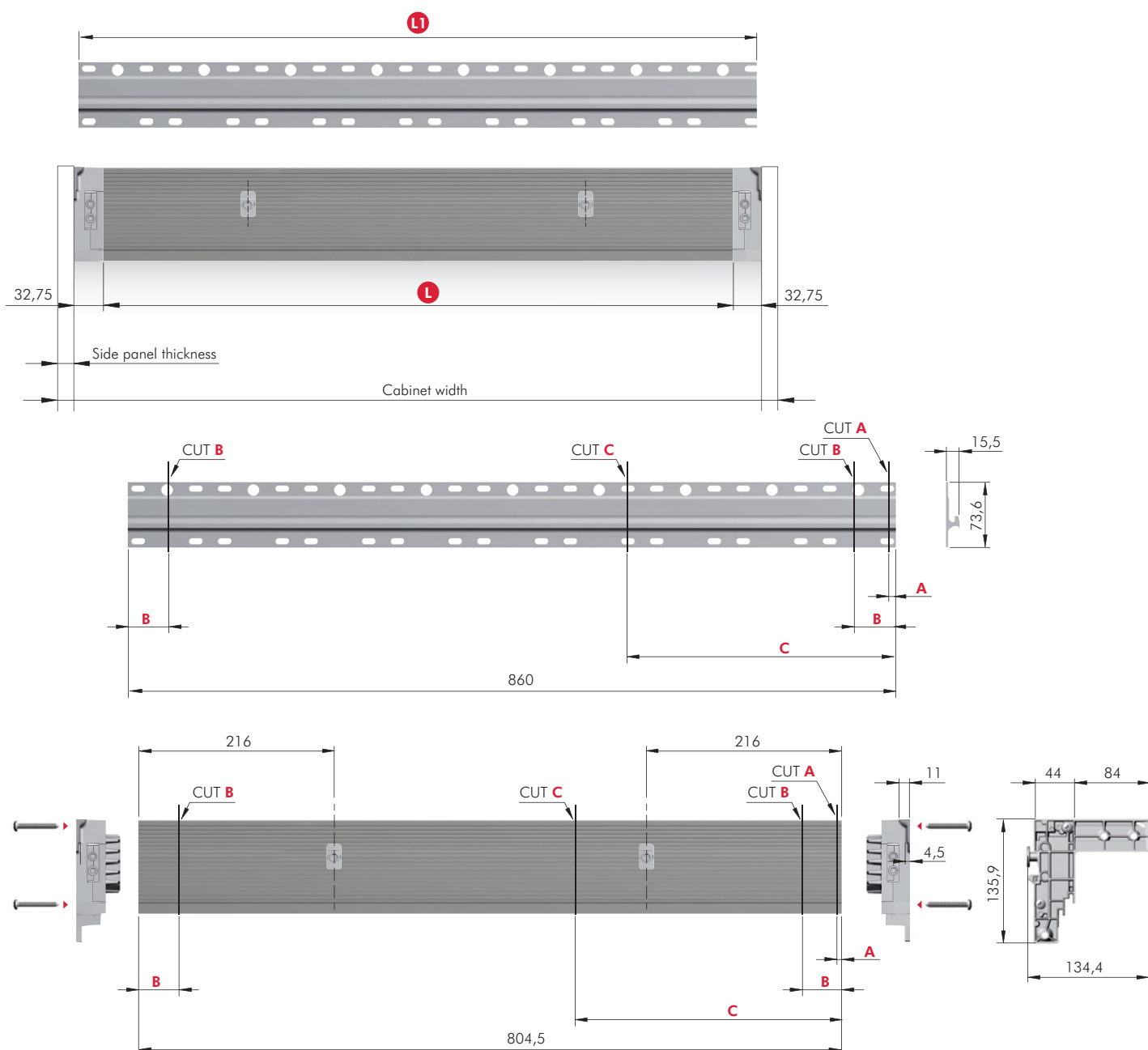
LIBRA BS WITH BOTH END ELEMENTS DISMOUNTED FOR CABINET 600 - 900 MM WIDE

TO BE CUT BY THE CUSTOMER

Side panel thickness	Cabinet width											
	600			700			800			900		
	C	L	L1	B	L	L1	B	L	L1	A	L	L1
15 mm	300	504,5	560	100	604,5	660	50	704,5	760	0	804,5	860
16 mm	302	502,5	558	101	602,5	658	51	702,5	758	2	802,5	858
18 mm	306	498,5	554	103	598,5	654	53	698,5	754	6	798,5	854
19 mm	308	496,5	552	104	596,5	652	54	696,5	752	8	796,5	852

L 6582002G

L1 6572002G



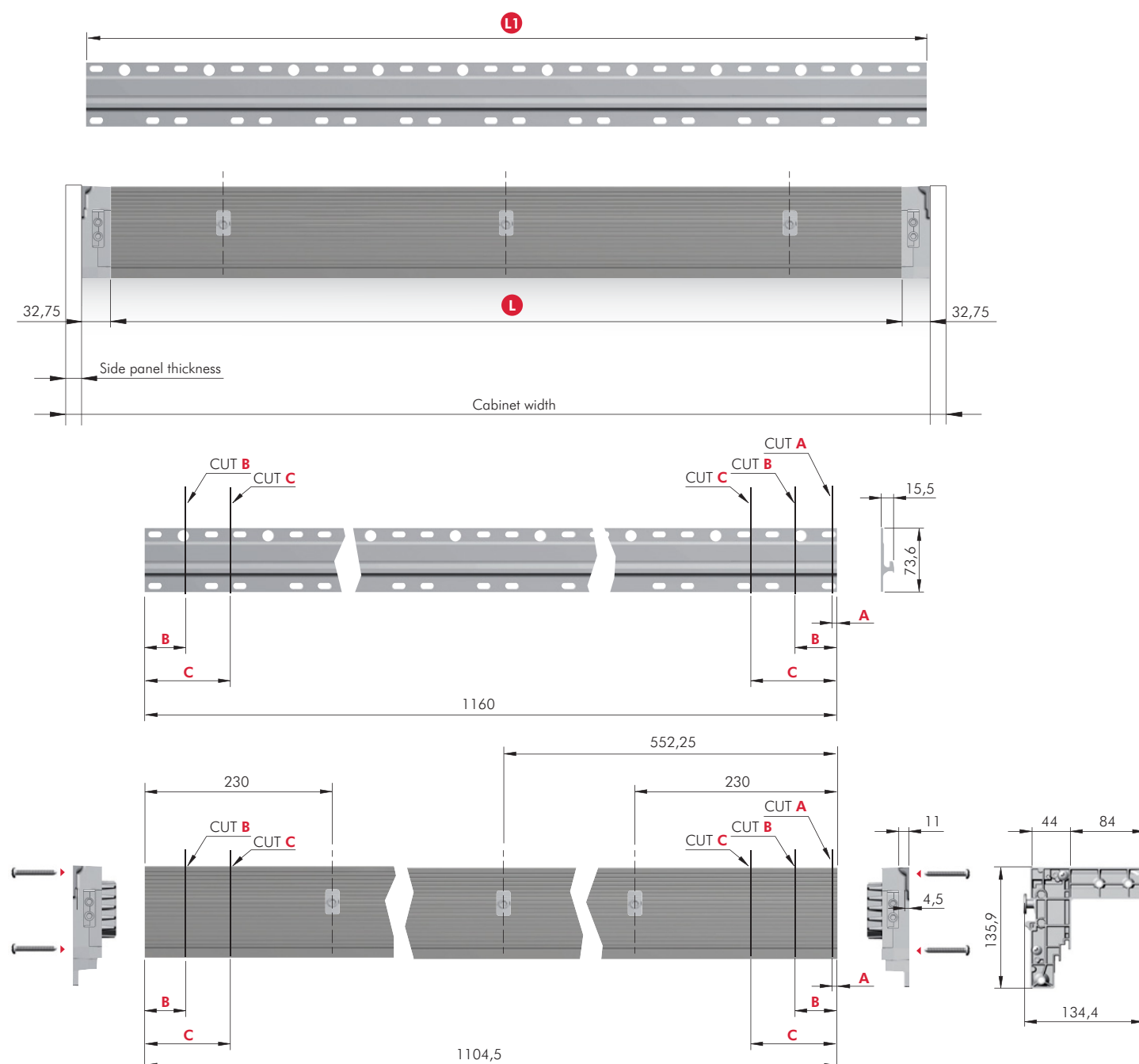
LIBRA BS WITH BOTH END ELEMENTS DISMOUNTED FOR CABINET 1000 - 1200 MM WIDE

TO BE CUT BY THE CUSTOMER

Side panel thickness	Cabinet width								
	1000			1100			1200		
	C	L	L1	B	L	L1	A	L	L1
15 mm	100	904,5	960	50	1004,5	1060	0	1104,5	1160
16 mm	101	902,5	958	51	1002,5	1058	2	1102,5	1118
18 mm	103	898,5	954	53	998,5	1054	6	1098,5	1108
19 mm	104	896,5	952	54	996,5	1052	8	1096,5	1104

L 6582002G

L1 6572002G





LIBRA BS WITH BOTH END ELEMENTS DISMOUNTED FOR CABINET 1500 MM WIDE

TO BE CUT BY THE CUSTOMER

Side panel thickness	Cabinet width		
	1500		
	A	L	L1
15 mm	0	1404,5	1460
16 mm	2	1402,5	1458
18 mm	6	1398,5	1454
19 mm	8	1396,5	1452

L 6582002G

L1 6572002G

