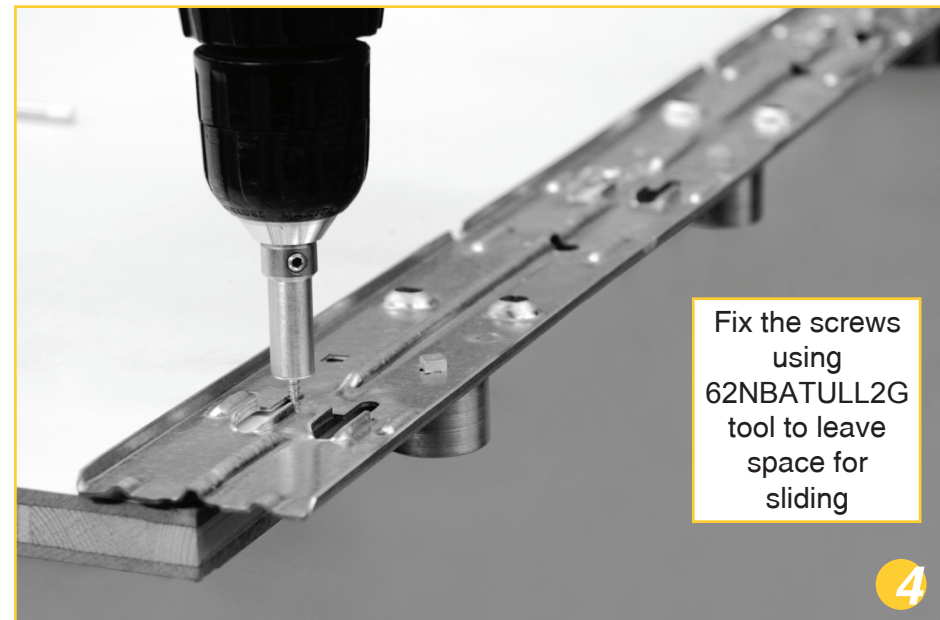
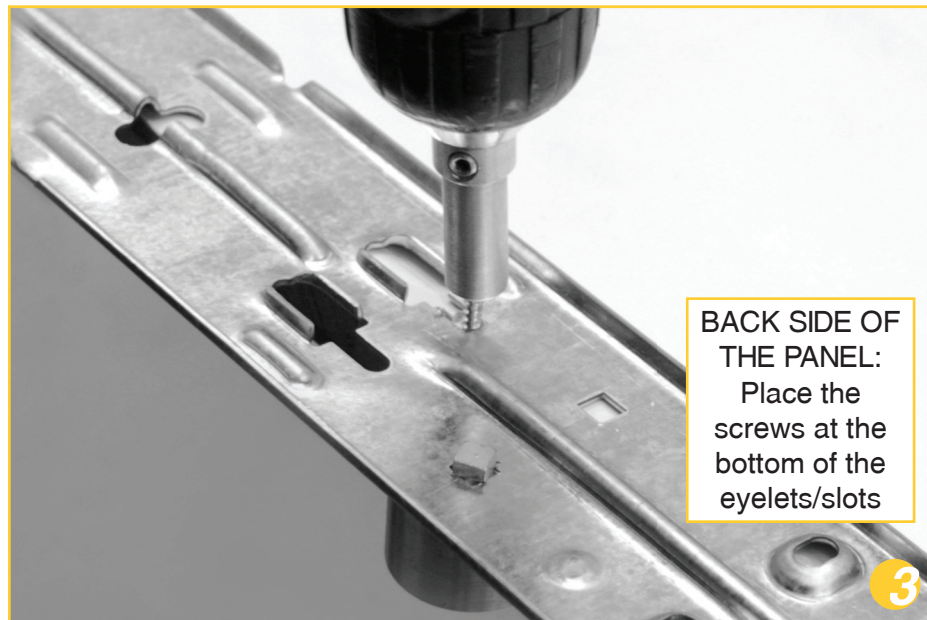
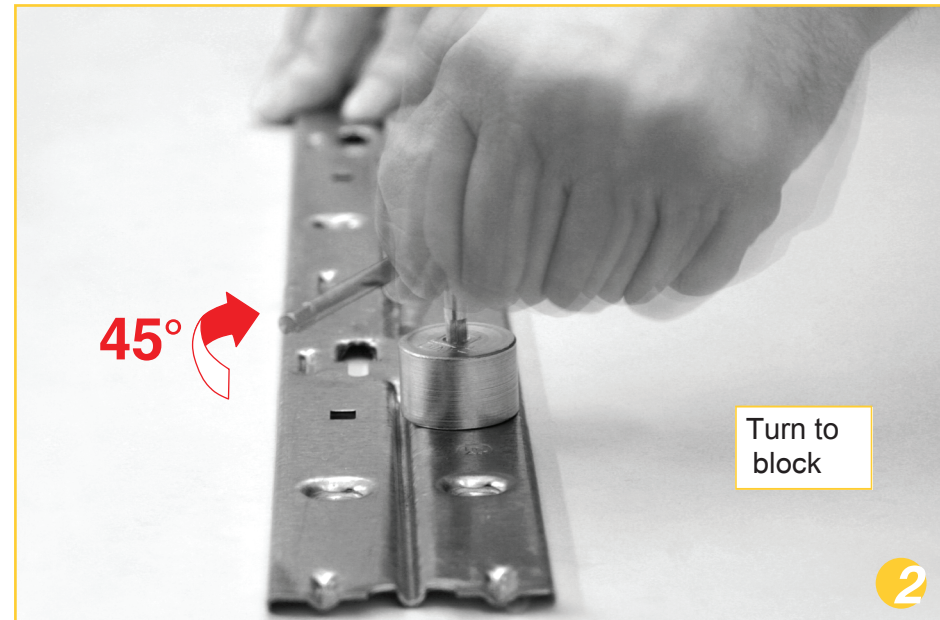
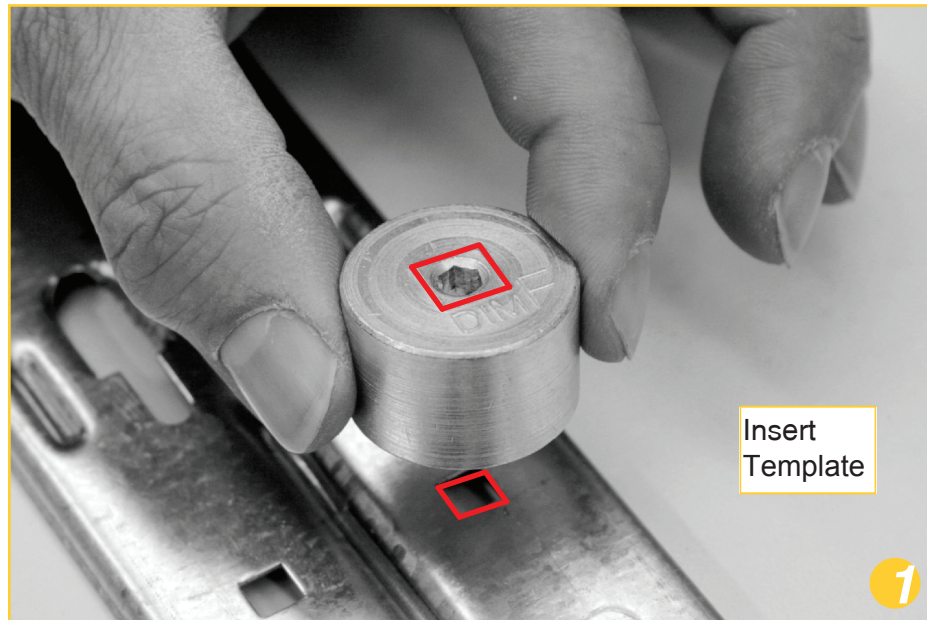


# Panels assembly on 62NB0 profiles with templates

USE OF TEMPLATES FOR: SCREWS PLACING ON THE BACK SIDE OF THE PANEL



# Panels assembly on 62NB0 profiles with templates

## USE OF TEMPLATES FOR: 62NB0 FIXING TO THE WALL

1. NB0 wall fixing with **templates** inserted into outside eyelets of the profile

2. Fit the panel with the second profile and **templates** mounted

3. Fixing of the **outside** part of the second profile

4. Remove the panel to fix the **inside** part of the profile

5. Fit the first panel and remove the templates afterwards

6. Fit the second panel with the next profile and **templates** mounted

