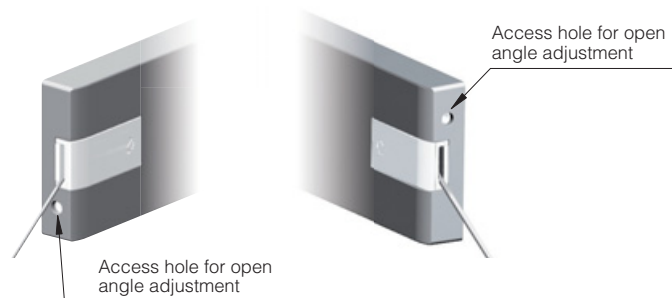
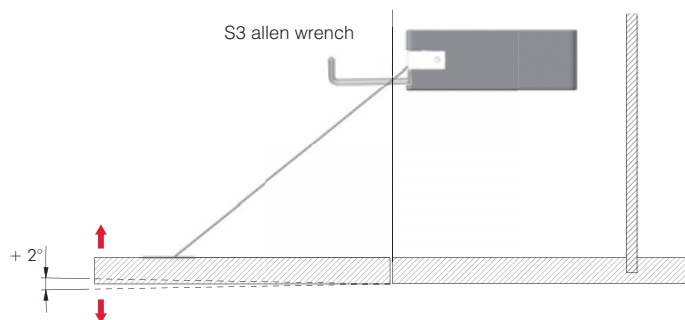
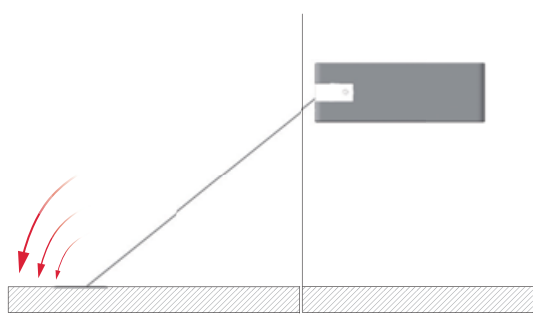




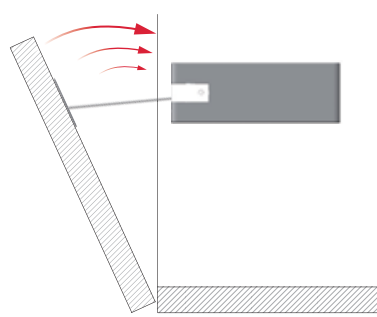
## ADJUSTMENT



## SOFT OPENING

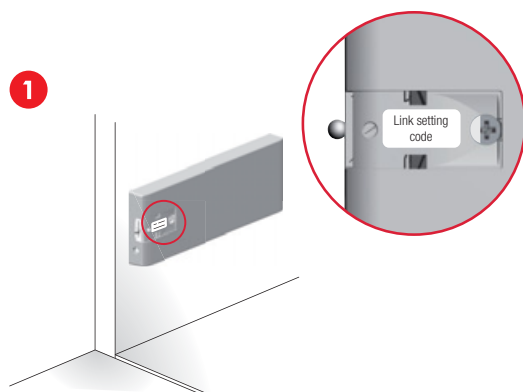


## SMOOTH CLOSING

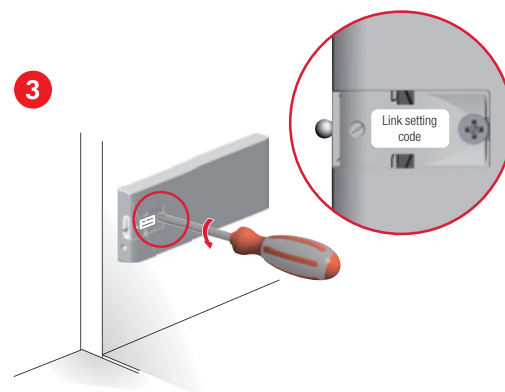
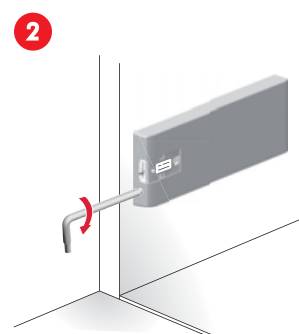


Soft opening and smooth closing are guaranteed only when opening and closing cycles are fully carried out.

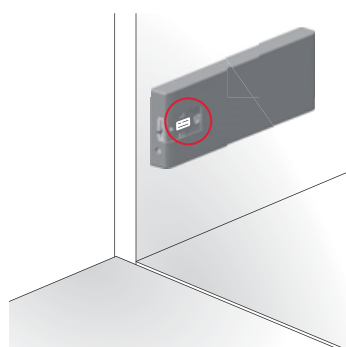
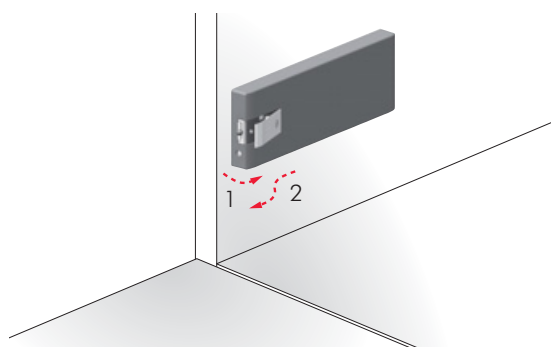
## LINK REMOVAL



Turn S3 allen wrench clockwise till its travelling end for access to the locking screw.



## LINK SETTINGS IDENTIFICATION



Label to identify the LINK setting code.

