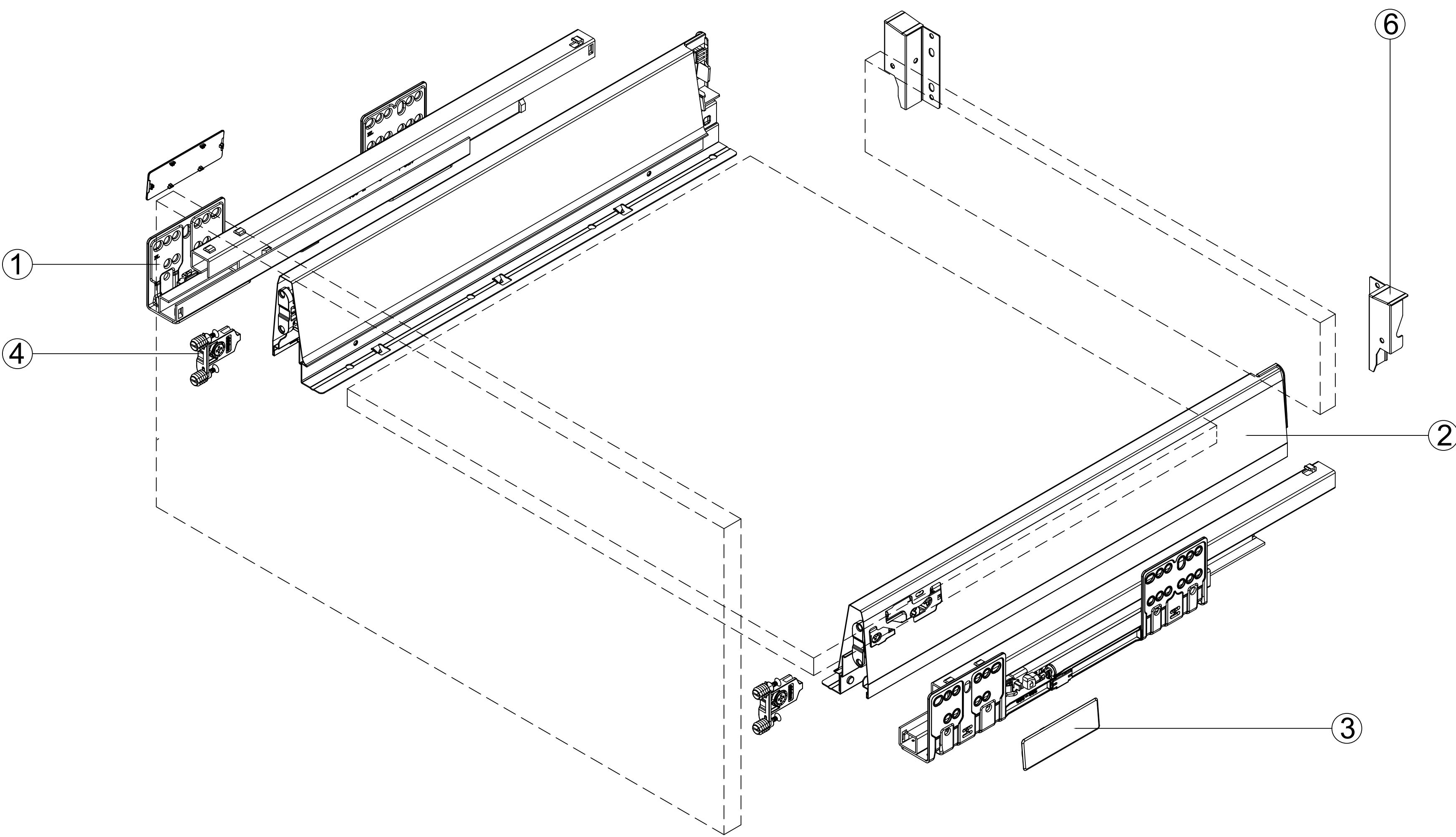


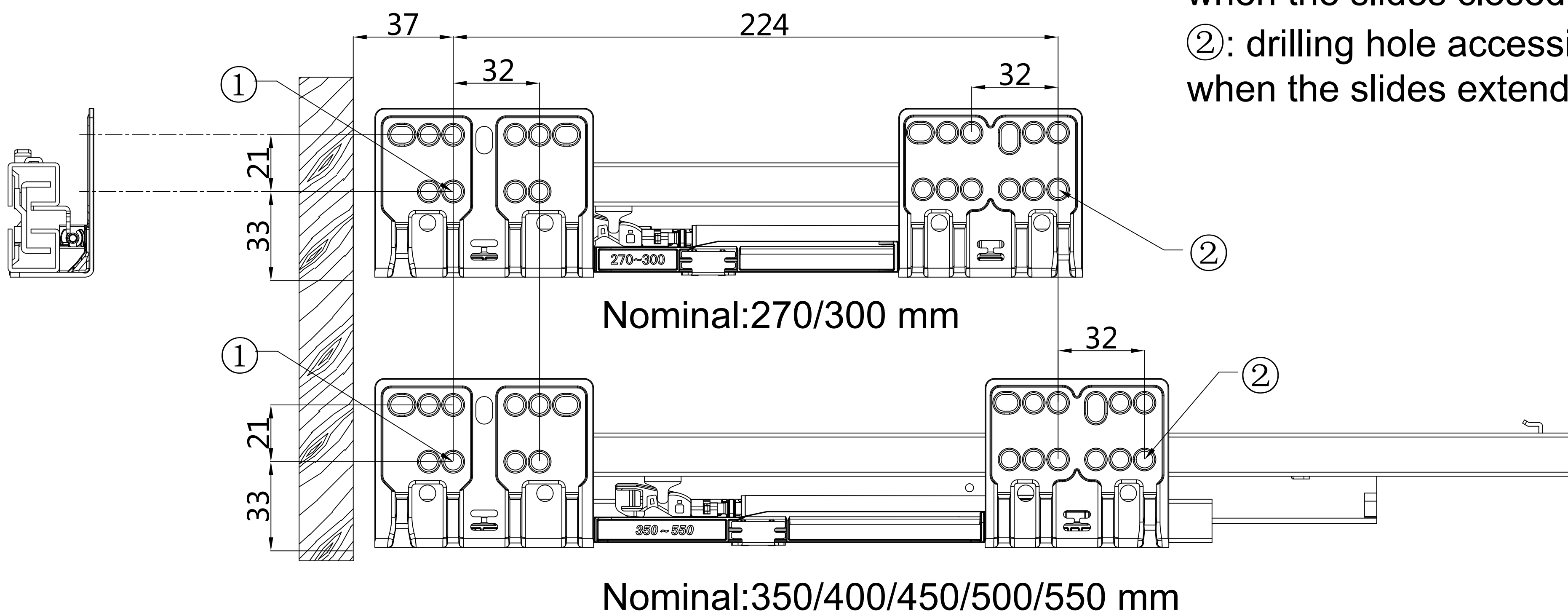
R 908 Series - 84mm Components



1.Cabinet profiles: (L/R)	
2.Drawer profiles: (L/R)	
3.Side cover plate	
4.Front fixing brackets	
6.BL84 Rear connecting bracket	

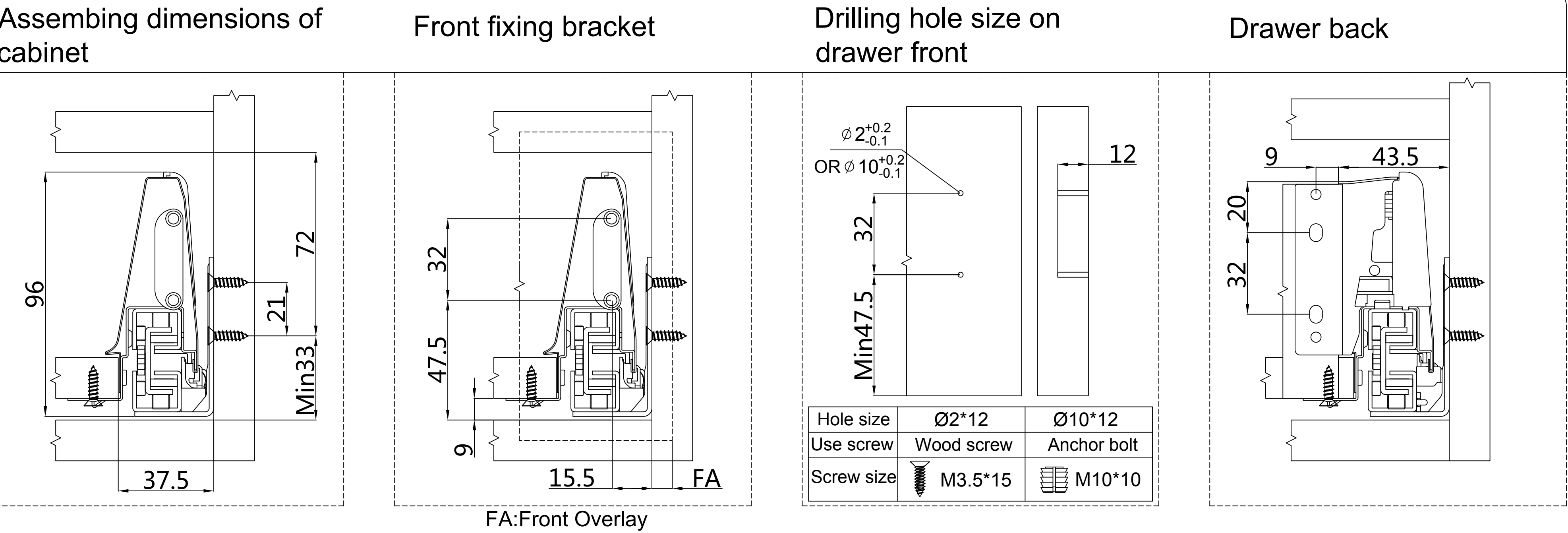
Nominal size	Internal drawer depth	Min. internal cabinet depth
270mm	244mm	280mm
300mm	274mm	310mm
350mm	324mm	360mm
400mm	374mm	410mm
450mm	424mm	460mm
500mm	474mm	510mm
550mm	524mm	560mm

Slide installation

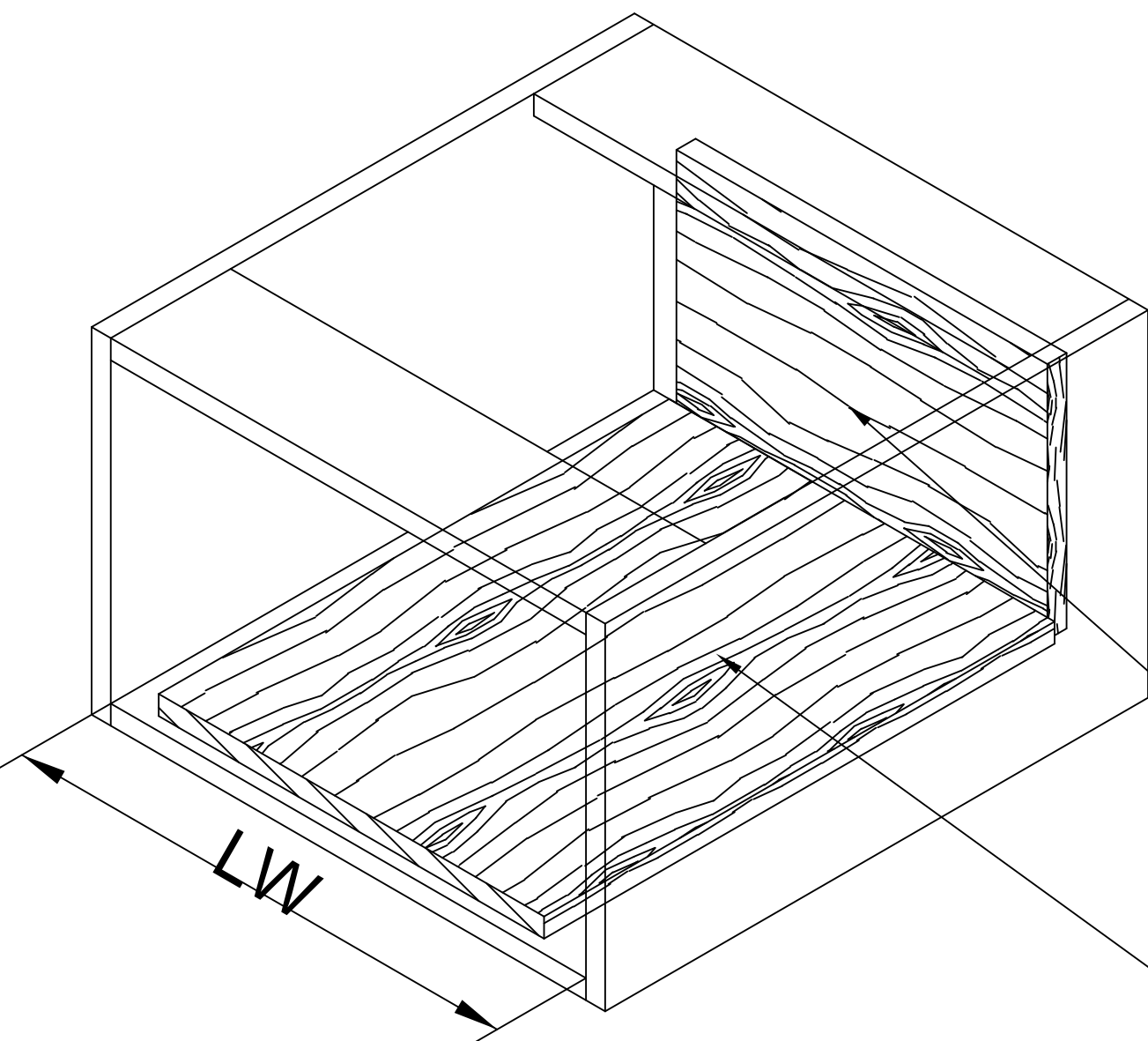


- ①: drilling hole accessible when the slides closed.
②: drilling hole accessible when the slides extended.

R 908 series - 84mm Installation



Bottom and back panels measurement



16mm Thickness panel

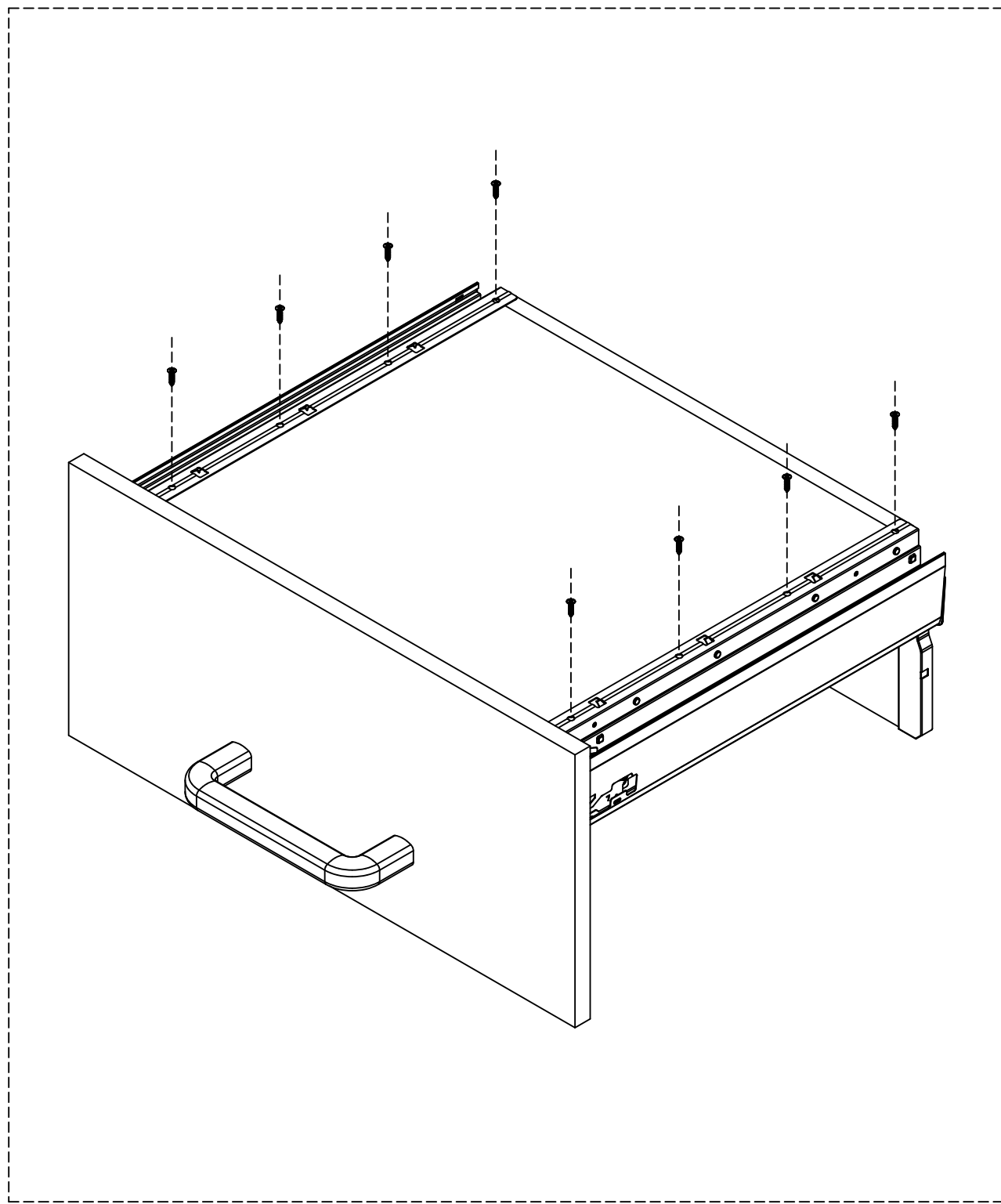
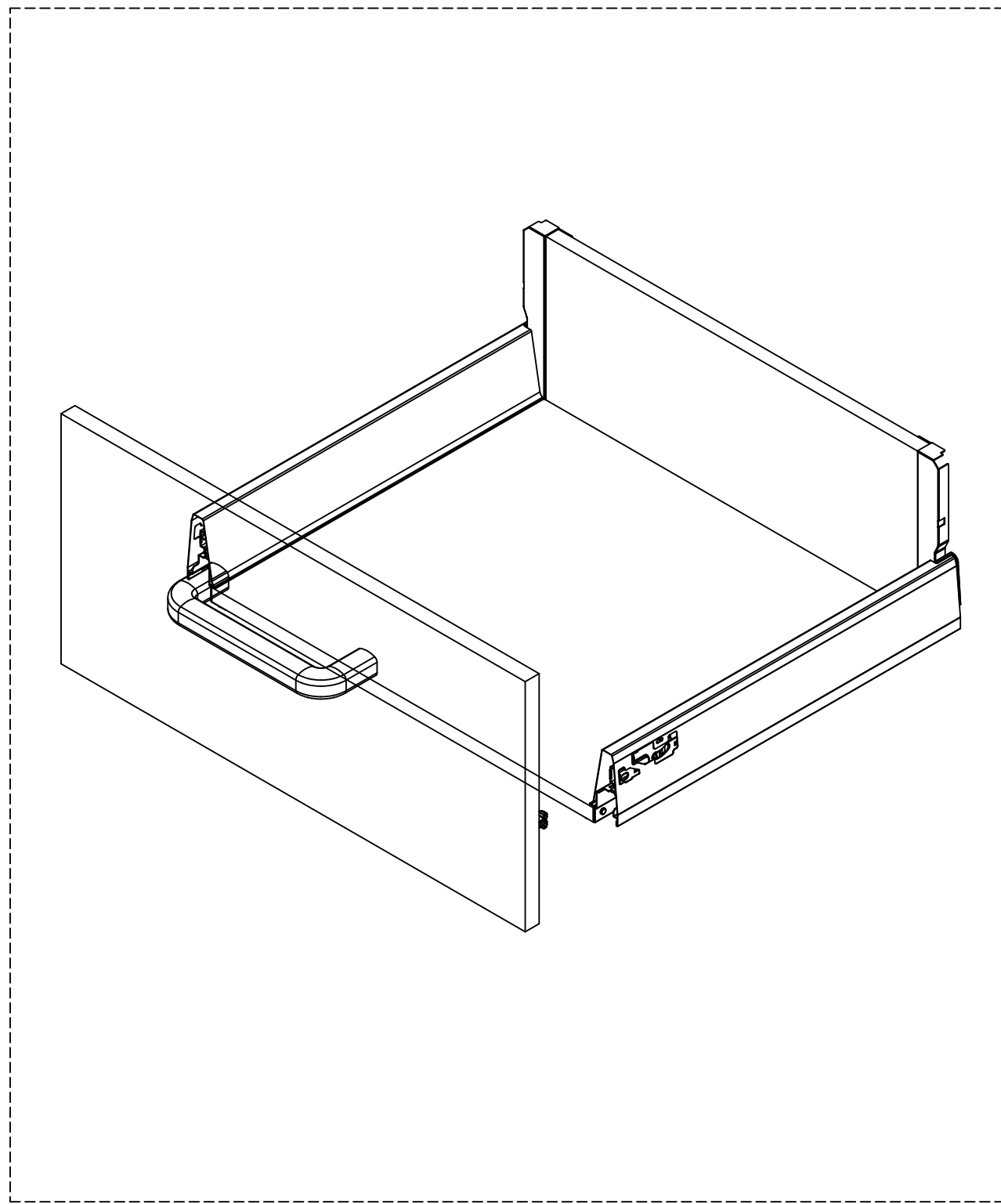
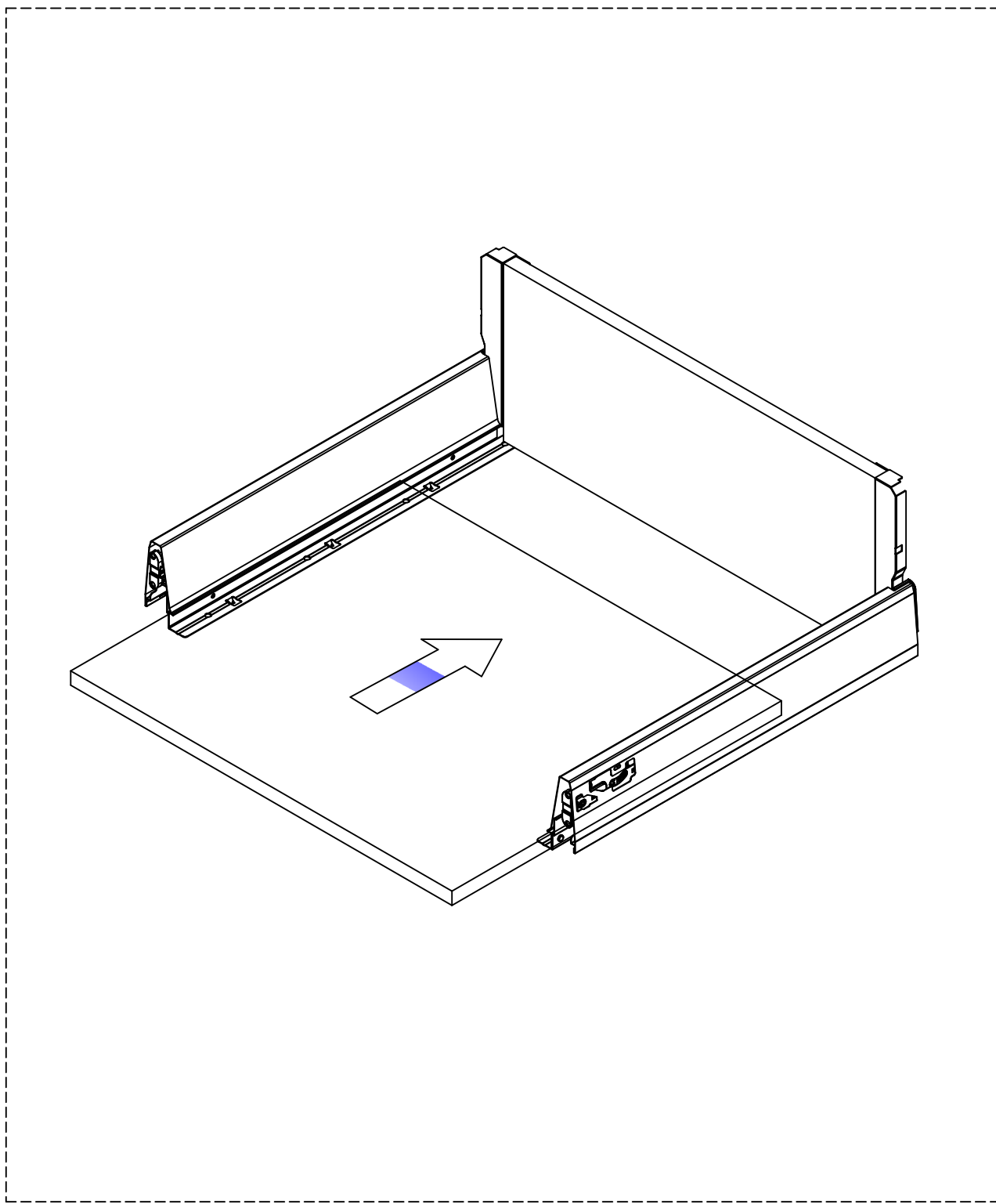
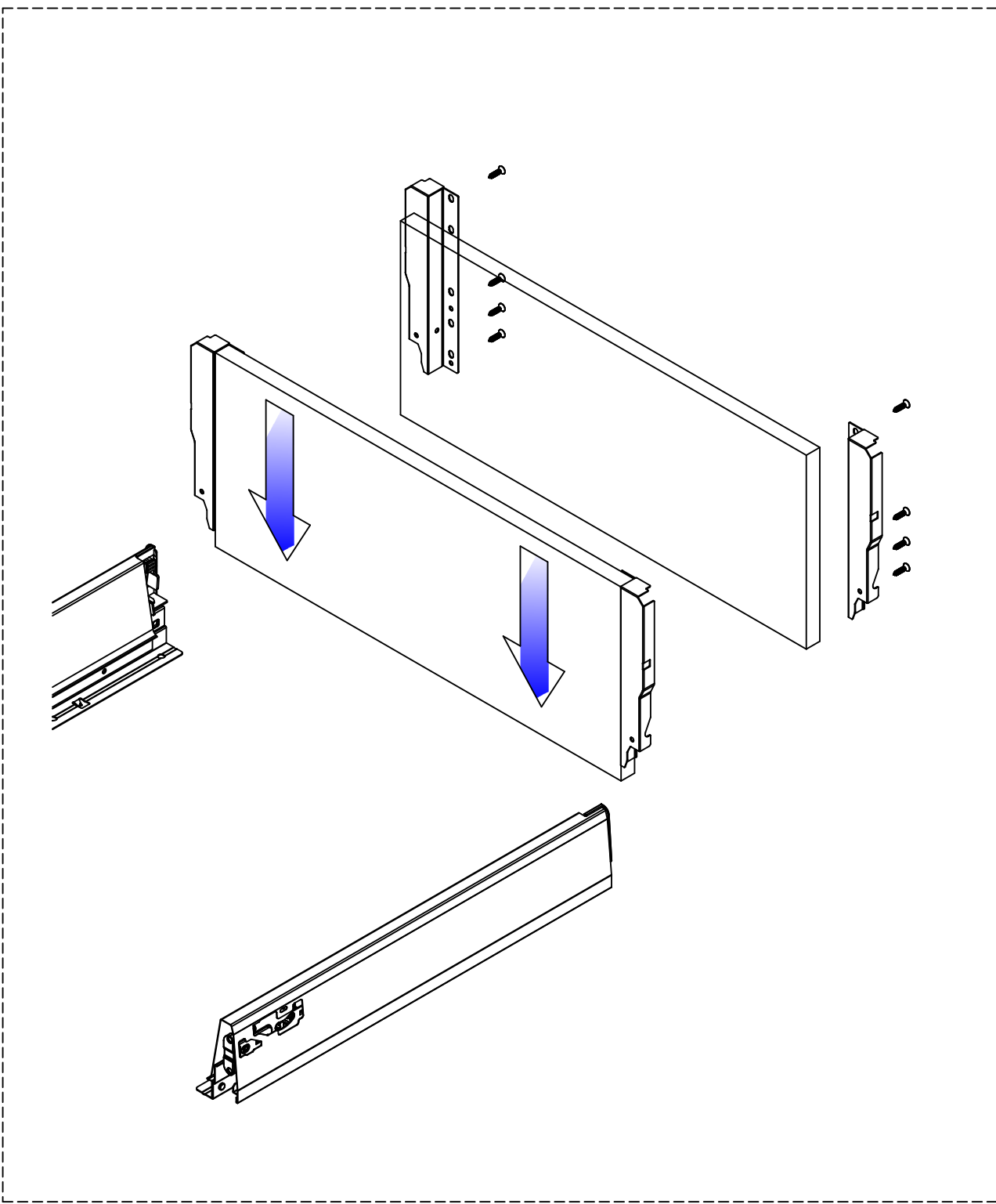
LW: Internal cabinet width

Nominal Length: 270/300/
350/400/450/500/550mm

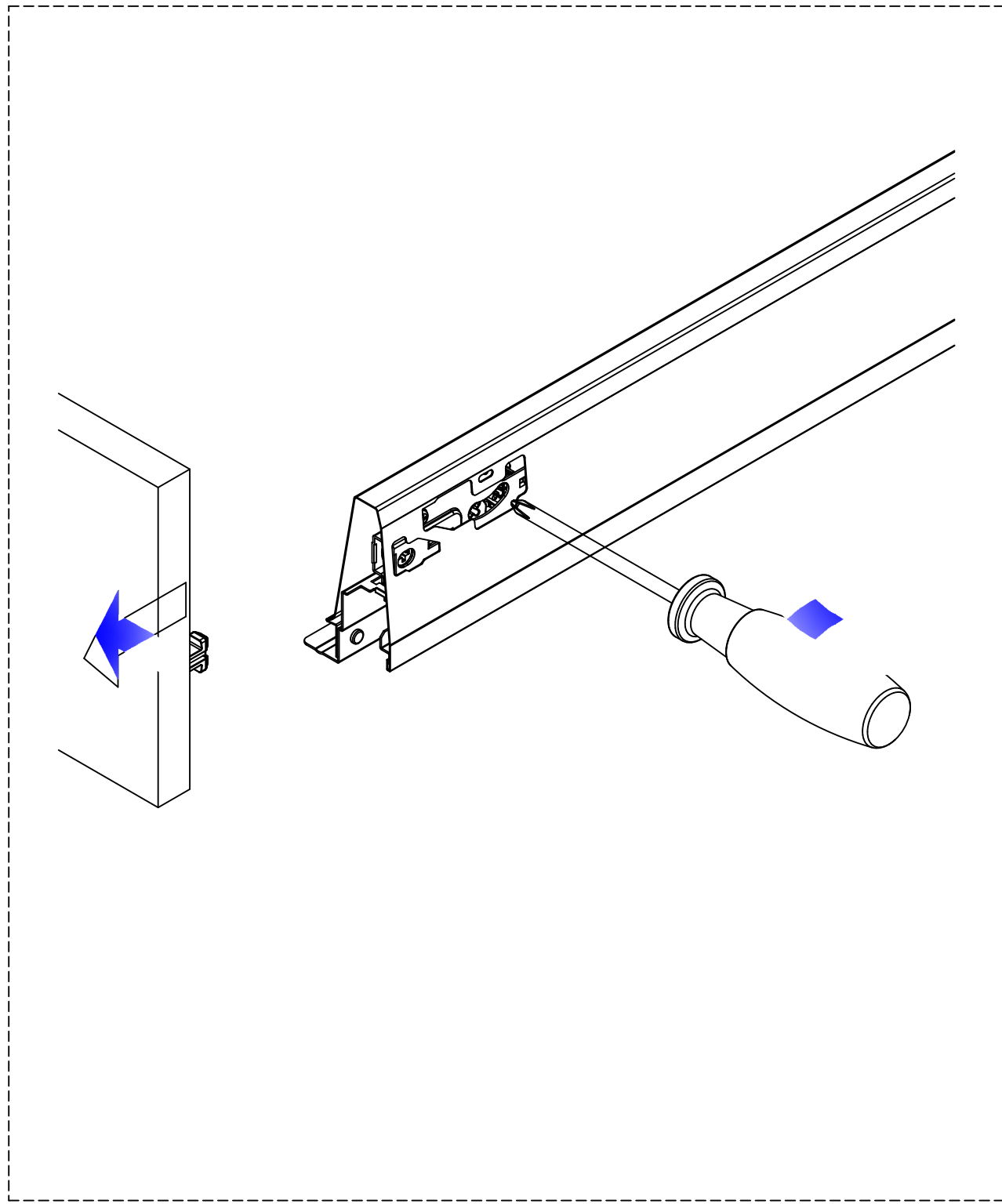
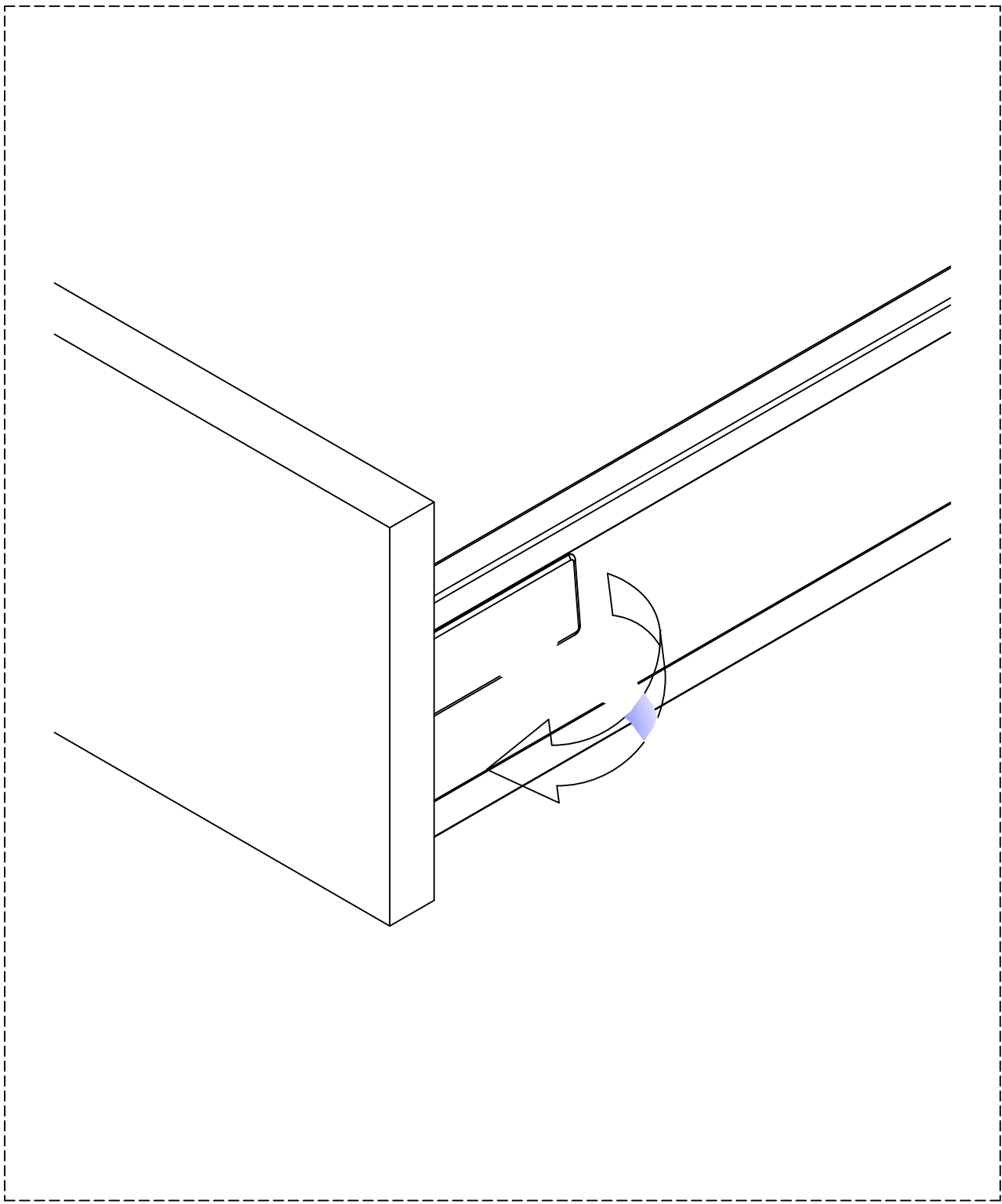
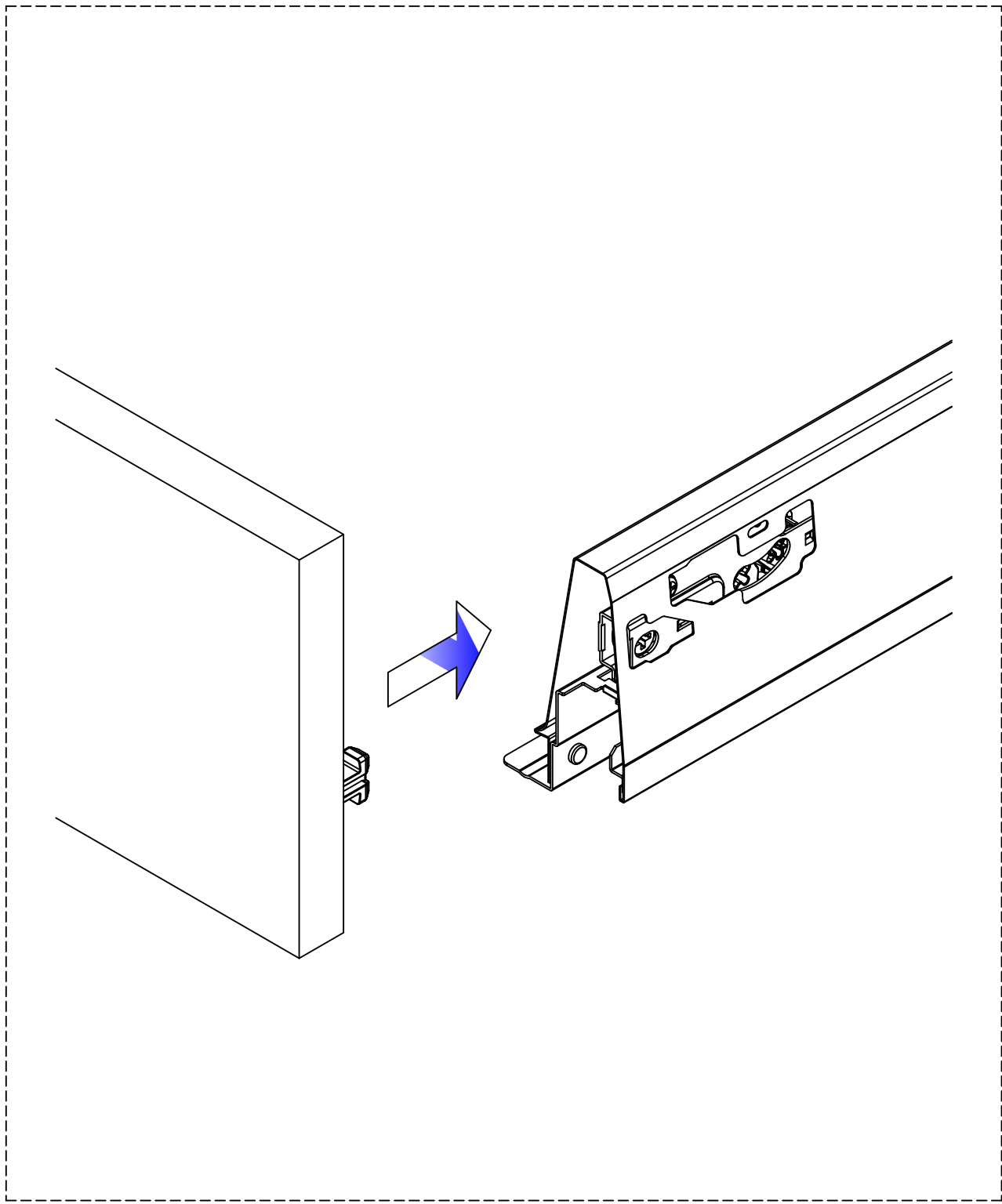
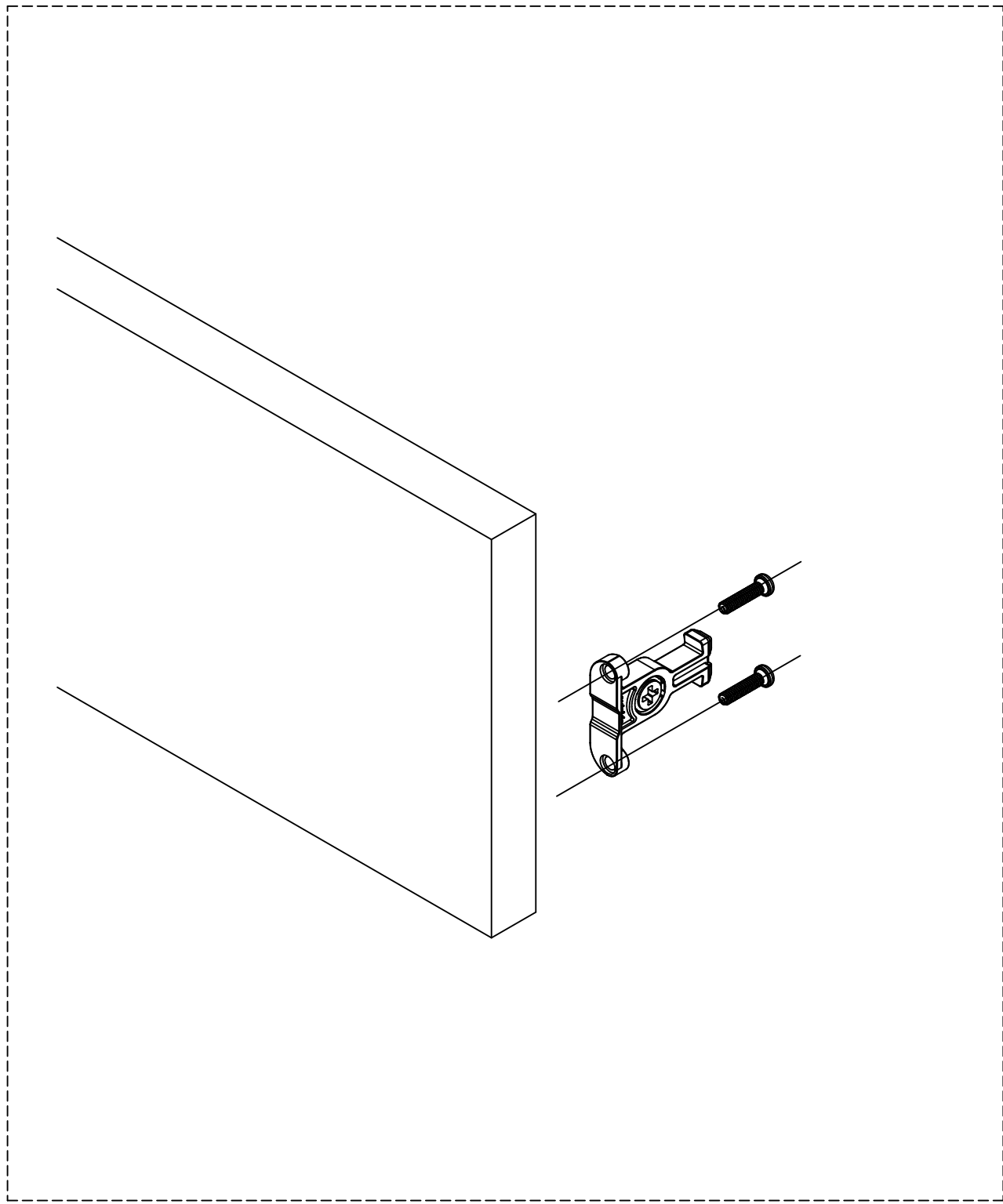
Back panel height=84
Back panel width=LW-87±0.5

Bottom panel width=LW-75±0.5
Bottom panel length=
Nominal length-24mm

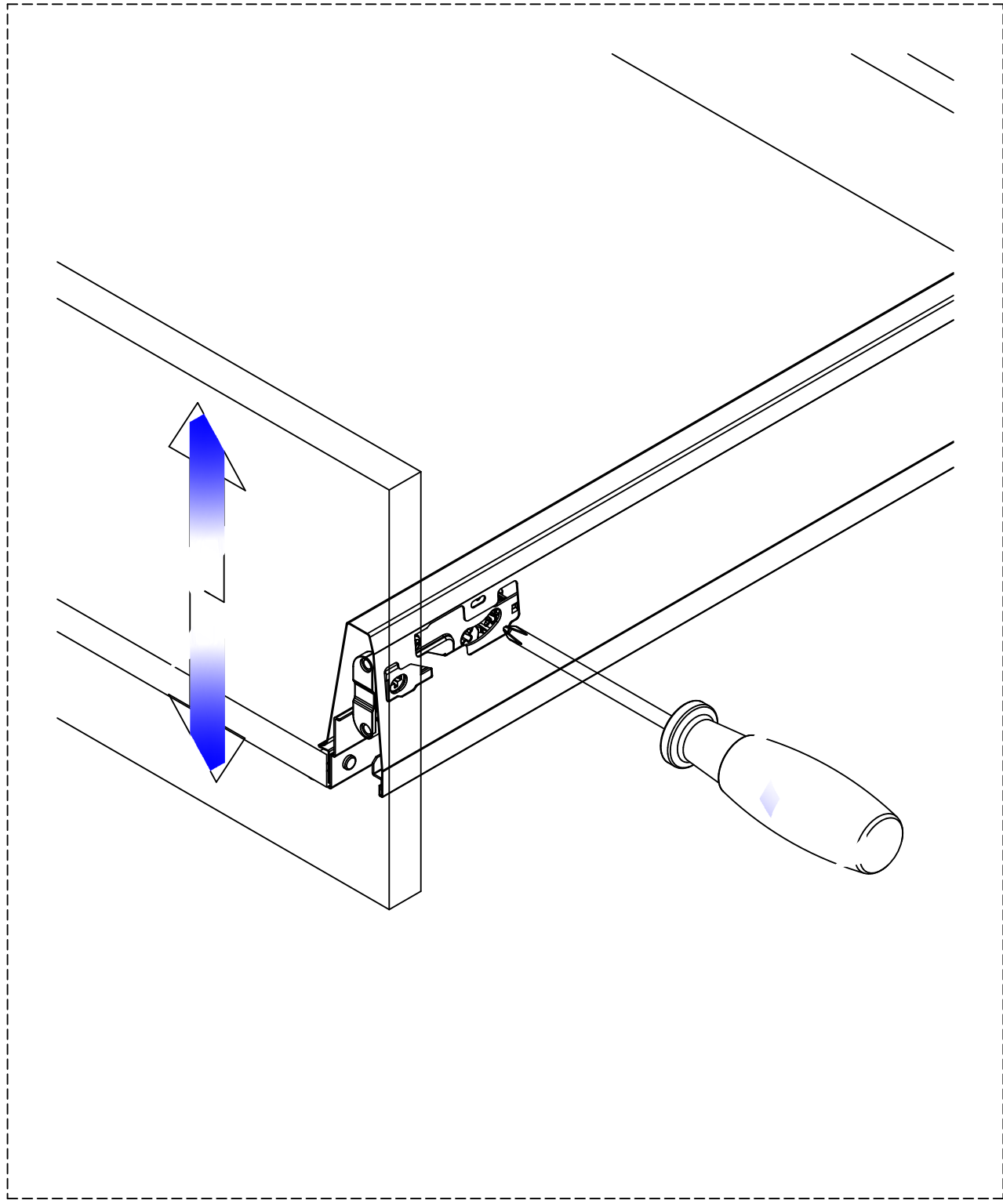
Drawer assembly



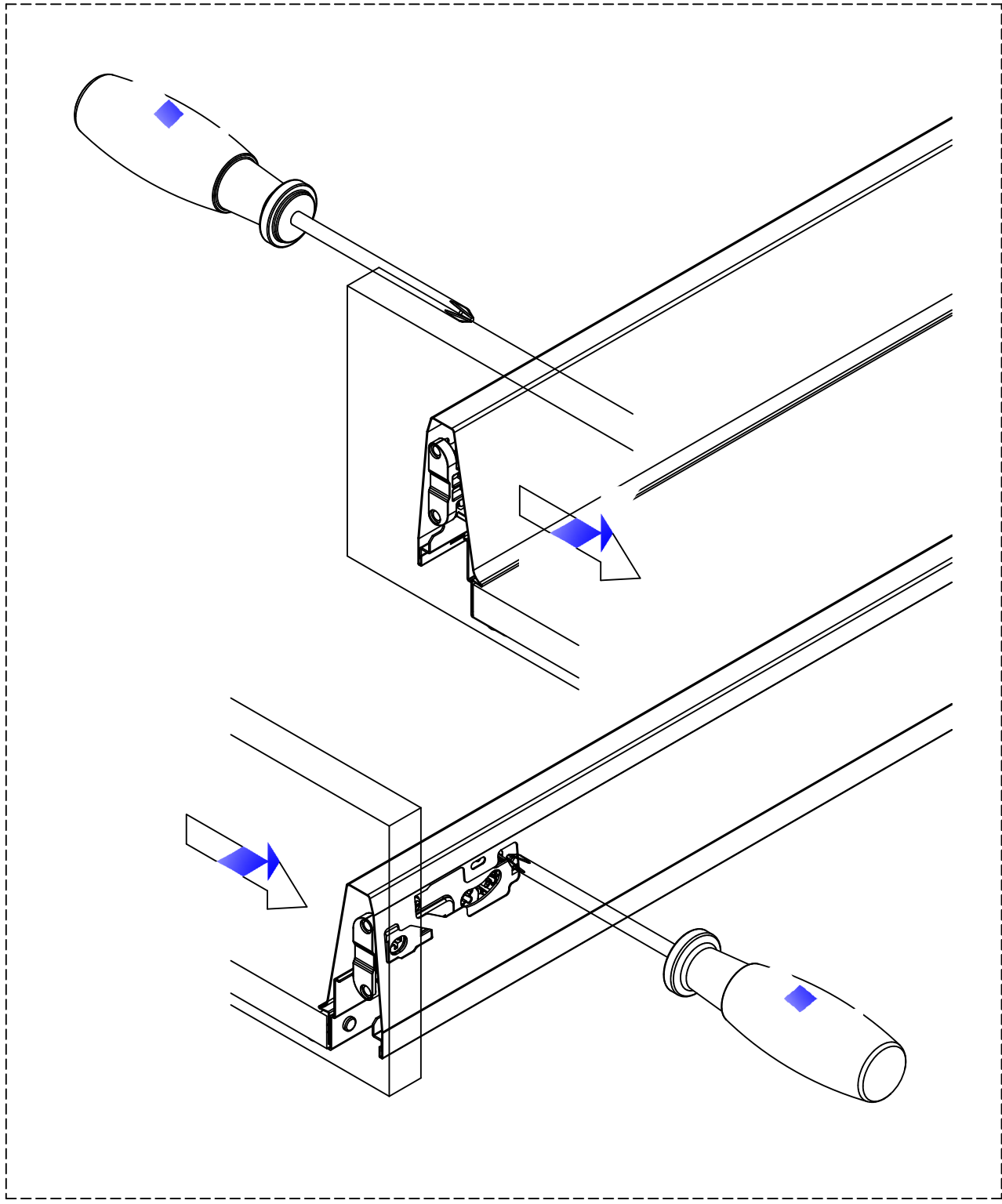
Install wooden drawer front



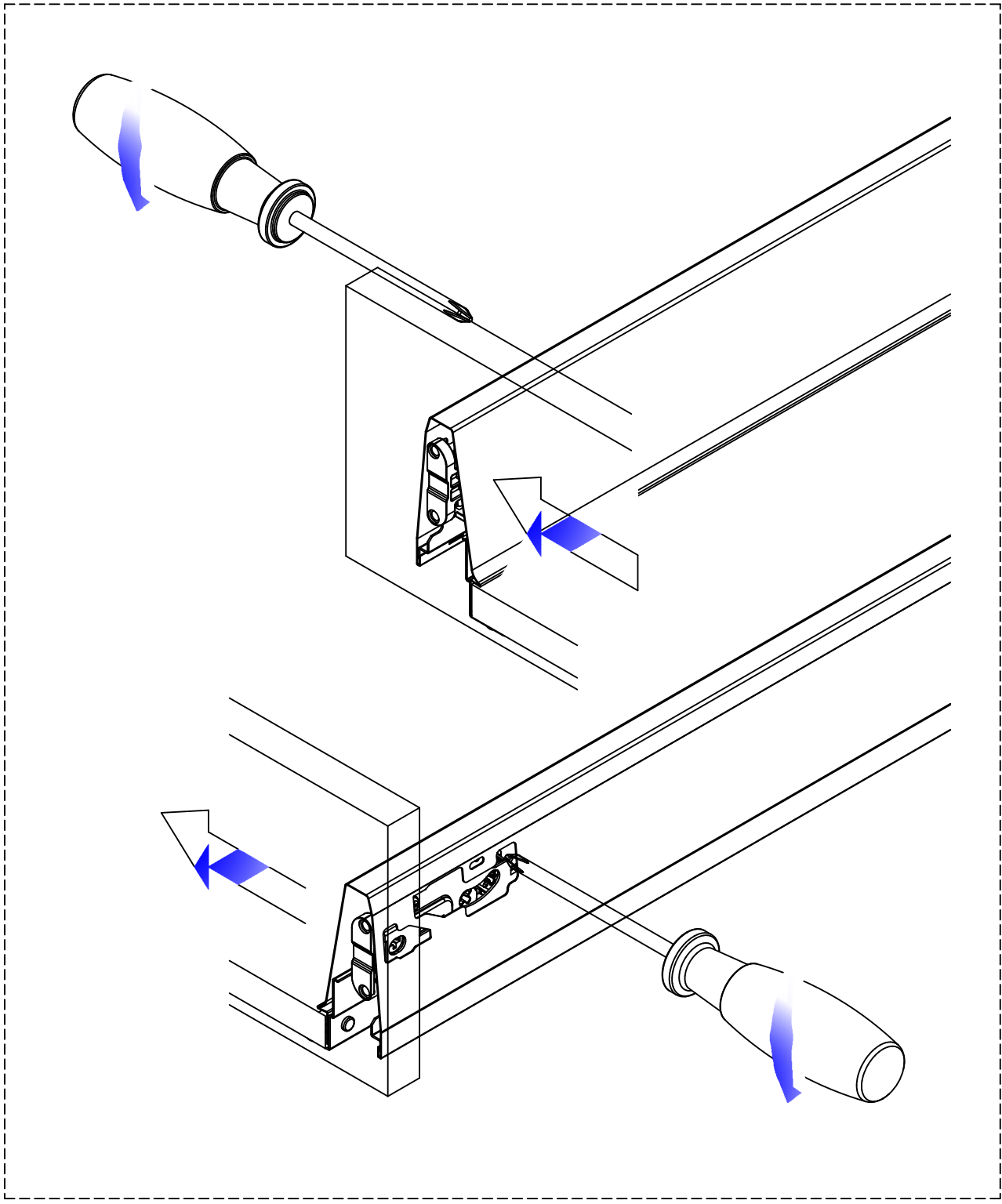
Wooden drawer front height adjustment: $\pm 2\text{mm}$



Drawer front right adjustment 1mm

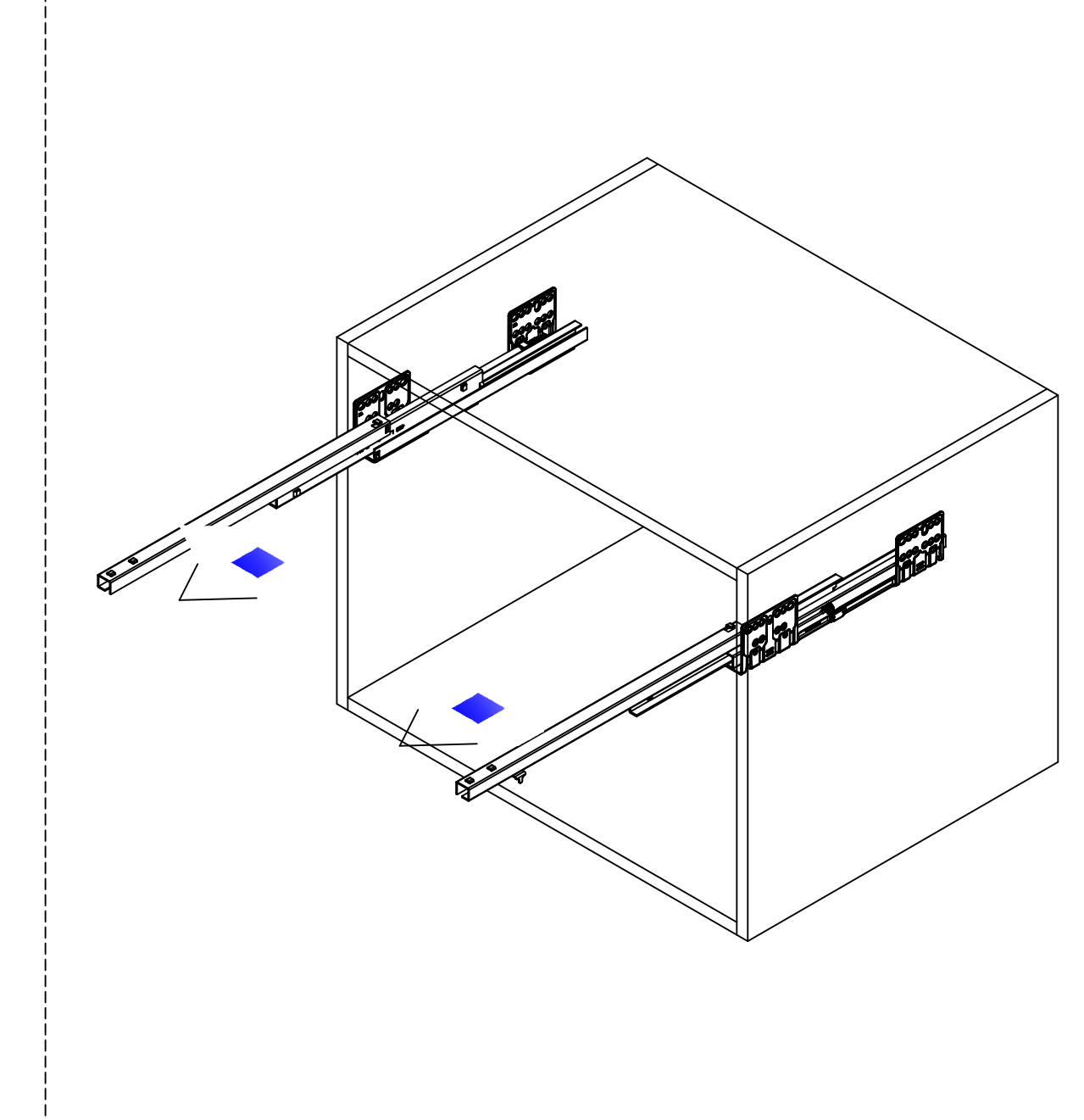


Drawer front left adjustment 1mm

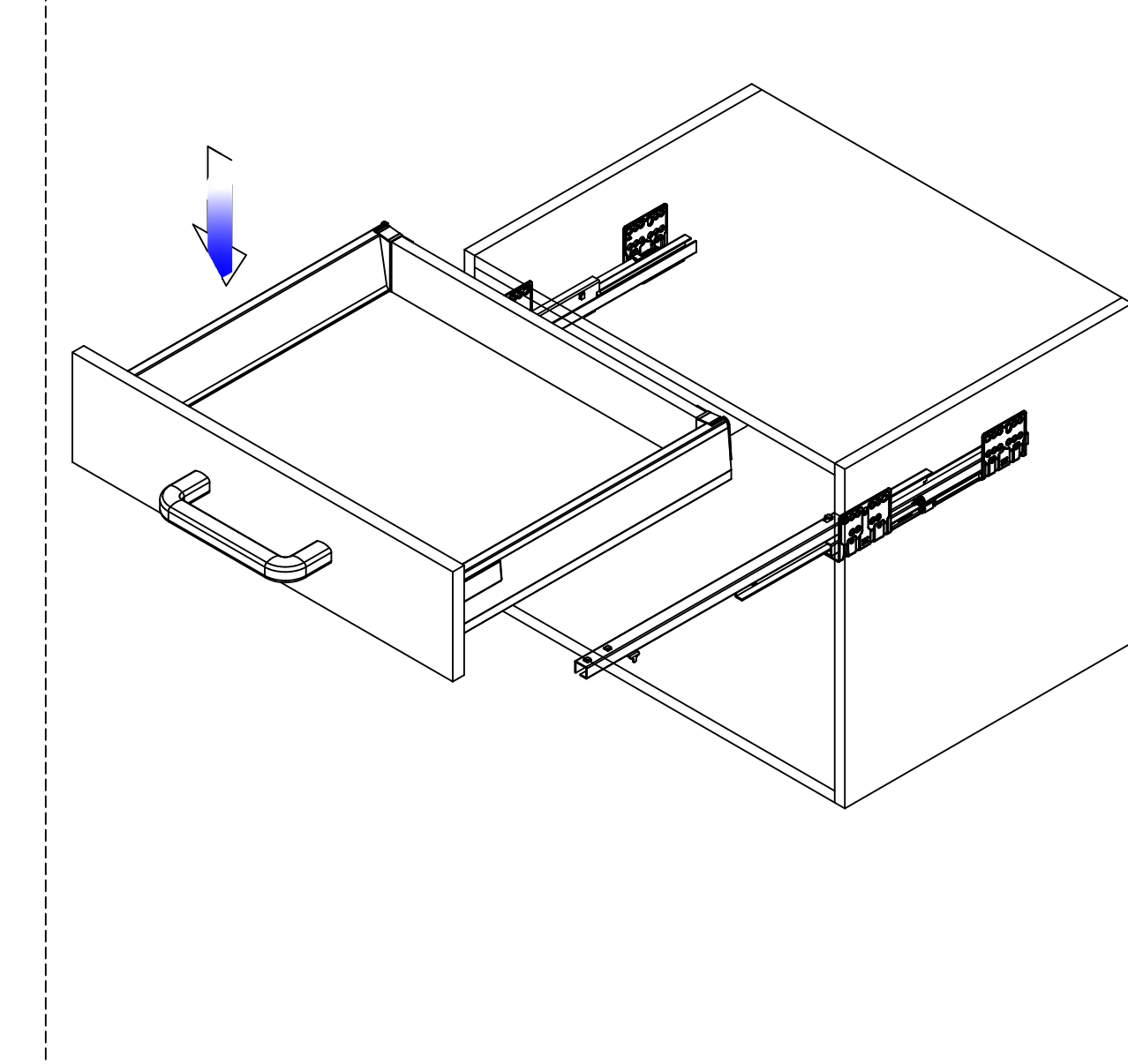


Install & Dismantle of drawer

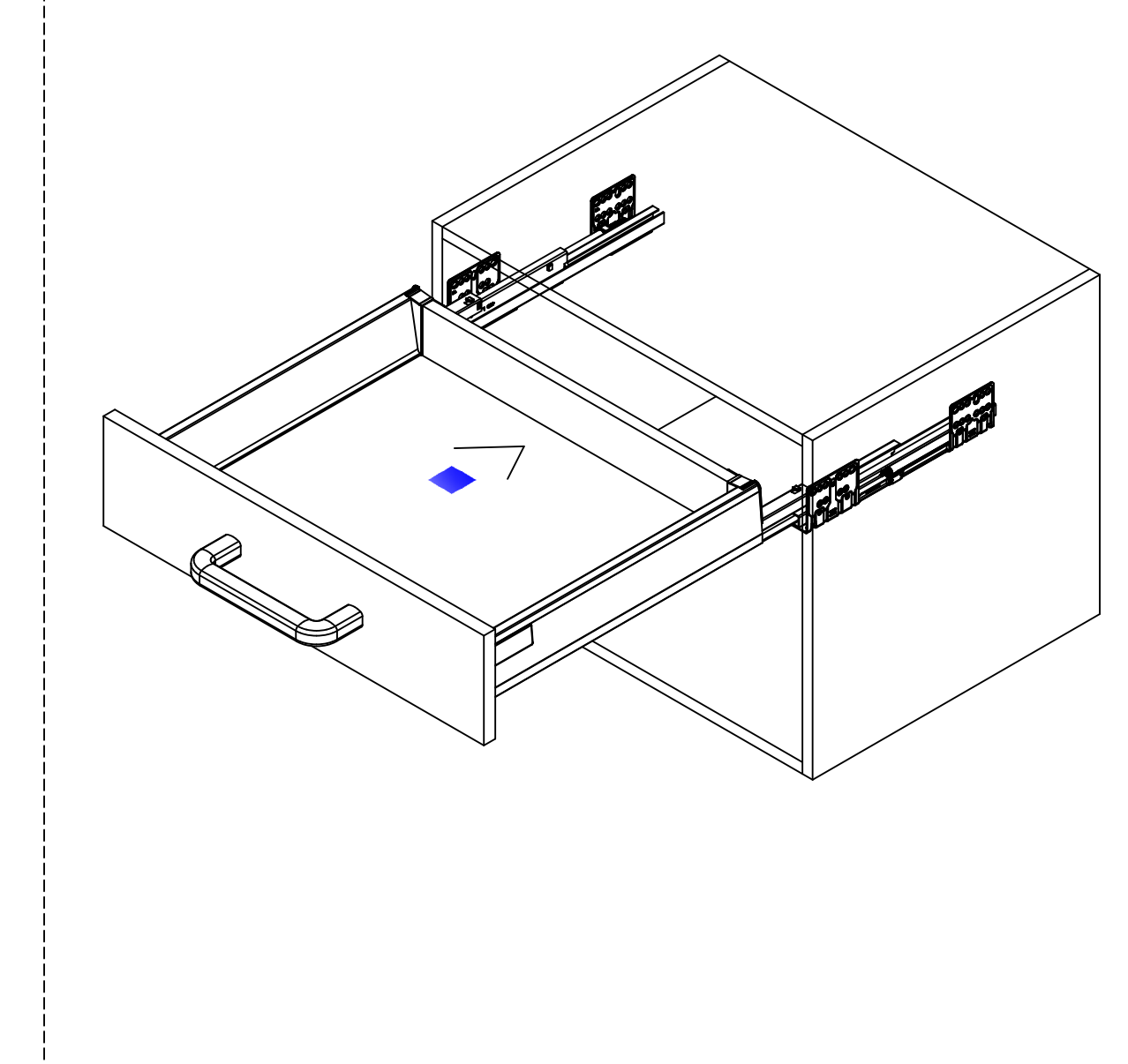
1.Sliding out the slides



2.Method I :put the drawer from the top onto the slide



3.Method II :put the drawer from the front onto the slide



4.Lift the drawer up for dismantle

