

Required: Pockit Point LED Light Body P/N: L-LED-IEB (1W)
 DC Power Supply - 18W P/N: L-DC-ELT18-CON (18W), or
 DC Power Supply - 60W P/N: L-DC-ELT60-CON (60W)
 Mini Converter, Collar Spring, Starter Cord and AMP® Connector are included with each Light.
 Mounting Block and Power Cord are included with each Power Supply.

Optional: See Accessories below.

Installation Instructions

Pockit® Point LED Light Series

1W 12VDC

READ ALL INSTRUCTIONS BEFORE INSTALLING SYSTEM.

Before beginning installation, be sure power is turned OFF to light system.

To begin installation, roughly lay out lighting system to help verify final positioning of all components and cord lengths.

1. Install 18W or 60W DC Power Supply with Mounting Block concealed from view. Do not plug Power Cord into 120V power source yet (see #1).

Note: Mini Converter consumes 1W of power, so the combined wattage of light/converter set is 2W.

18W DC Power Supply can supply power to a maximum of (9) 1W Pockits®.
 60W DC Power Supply can supply power to a maximum of (30) 1W Pockits®.

2. Place Mini Converter near Mounting Block, also concealed from view. Plug AMP® Connector from Mini Converter into Mounting Block (see #2).
3. Determine exact position of Pockit® Point light fixture(s). Drill 25mm (1") hole to recess mount (see 'A'). Be sure to remove rough areas at edge and inside hole.
4. Feed wires through hole and push light fixture into place. Notch in body enables wire to more easily route to back or side (see #3). Light is securely held in position with Collar Spring (see 'B').
5. Route Starter Cord from light fixture to Mini Converter and link together (see #4). If spacing is more than 2m (79"), an Extension Cord may be used (see Accessories).

Note: Maximum length of Starter Cords from Power Supply to light should not exceed 5m (16'). Longer cords could result in poor light quality.

6. Cords can either: (a) feed through a hole in mounting surface (shelf); or (b) run along surface. Starter Cord only requires a 5mm (3/16") hole (before AMP® Connector is attached) (see #5). See "Connecting Starter Cords" information below (†).

Note: Use insulated staples or plastic ties to secure all loose wires.

7. To add additional lights to the Mounting Block, repeat the steps above. See maximum lights allowed per Power Supply under "Required" below.

Note: Requires additional Mounting Blocks when more than 6 lights are desired from 1 Power Supply.

8. Finally, plug Power Cord into 120V power source.

(†) Connecting Starter Cords:

Starter Cords come with a male AMP® Connector unattached to help route wires through smaller holes if needed. To attach, push needle ends of Starter Cord wires into AMP® Connector until completely seated.

IMPORTANT! Make sure to match polarity (+) and (-) of the wires to the AMP® connector. See markings on wires and connector (see #6).

Required:

DC Power Supply 18W 12VDC (P/N: L-DC-ELT18-CON) – powers up to 9 light fixtures maximum. ... OR ...

DC Power Supply 60W 12VDC (P/N: L-DC-ELT60-CON) – powers up to 30 light fixtures maximum.

Mounting Block and Power Cord are included with each Power Supply.

Mini Converter, Collar Spring, Starter Cord and AMP® Connector are included with each Light.

Accessories:

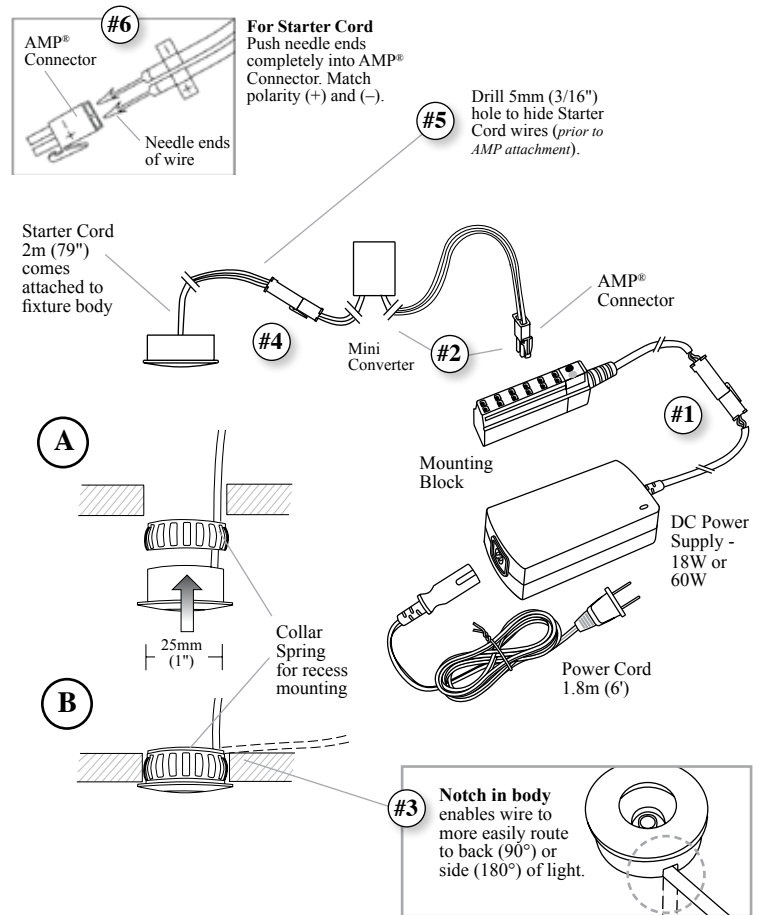
Extension Cords (P/N: L-LED-LINKD) – available in 15cm (6"), 25cm (10"), 60cm (24"), 120cm (48"), or 180cm (72") lengths (used to lengthen Starter Cords only).

Mounting Blocks (P/N: L-TRANS-MNT-BL) – 12VDC, 60W, 6-Snap.

Additional Tresco® Accessories: Switches and AMP® Connectors.

Save these instructions for future reference.

For technical assistance: 1-800-227-1171



IMPORTANT SAFETY INSTRUCTIONS

CAUTION: To reduce the risk of fire, electric shock, or injury to persons:

- Tresco® 18W DC Power Supply powers up to 9 Pockit® Point Lights.
- Tresco® 60W DC Power Supply powers up to 30 Pockit® Point Lights.
- The Pockit® Point is NOT dimmable.
- LED lights are bright. Do not look directly at lights.
- Not intended for recessed installation in ceilings or soffits.
- Do not conceal 120V Power Supply Cord or power supply inside a wall, ceiling, soffit, or similar permanent structure, unless consulting a licensed electrician.
- Use only insulated staples or plastic ties to secure ALL loose cords.
- This portable lamp has a polarized plug on the Power Supply Cord (one blade is wider than the other) as a feature to reduce the risk of electric shock. This plug will fit in a polarized outlet only one way. If the plug does not fit fully in the outlet, reverse the plug. If it still does not fit, contact a qualified electrician. Never use with an extension cord unless plug can be fully inserted. Do not alter the plug.

This light is intended to be used as a cabinet light on wood, particle board or other structurally sound, heat resistant surface. Care should be taken during and after installation to avoid contact of light with wiring, cord, or any combustible material.



PocPoint In/714/grx

2409 Plantside Dr.
 Jeffersontown, KY 40299

Tel: 800-227-1171
Fax: 502-491-2215

Email: cservice@trescolighting.com
 Web: www.trescolighting.com

I-POCPNT-1014