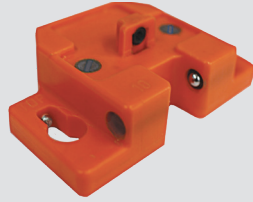


Euro hinge insertion ram

- Can be used for inserting CLIP top BLUMOTION, CLIP top and CLIP press-in hinges
- Not for use with wide angled or specialty hinges



NOTE: Can be used with CLIP top BLUMOTION 95°, CLIP top 95° and CLIP 100° by adjusting the ball plungers

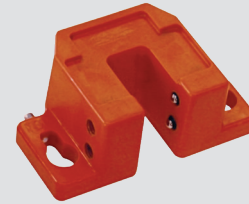
Part no.

#10 insertion ram

MZM.0010.01

Euro hinge insertion ram

- Can be used for inserting Blum wide angle press-in hinges



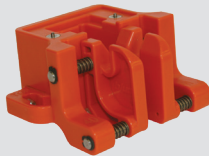
Part no.

#18 insertion ram

MZM.0018

Euro hinge insertion ram

- Can be used for inserting most Blum press-in Euro hinges



NOTE: Not for use with 170°, 155° and 125° wide angle hinges

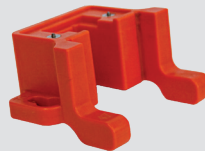
Part no.

#40 insertion ram

MZM.0040

COMPACT hinge insertion ram

- Can be used for inserting all Blum COMPACT press-in hinges

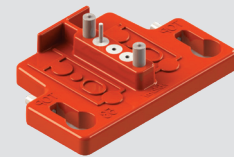


#47 insertion ram

MZM.0047

Mounting plate insertion Ram

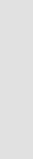
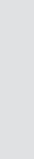
- MINIPRESS insertion ram for press-in, in-line mounting plate 177H3100



#53 insertion ram

MZM.0053

Machine drill bits



Ø5 mm

Ø8 mm

Ø10 mm

Ø35 mm

Part no.

Ø5 mm drill bit (right handed)

M01.ZB05.D2 R

Ø5 mm drill bit (left handed)

M01.ZB05.D3 L

Ø8 mm drill bit (left handed)

M01.ZB08.03 L

Ø10 mm drill bit (right handed)

M01.ZB10.02 R

Ø10 mm drill bit (left handed)

M01.ZB10.03 L

Ø10 mm drill bit for mineral composites/HPL (right handed)

M01.ZB10.T2 R

Ø10 mm drill bit for mineral composites/HPL (left handed)

M01.ZB10.T3 L

Ø20 mm drill bit (right handed)

M01.ZB20.02 R

Ø35 mm drill bit (right handed)

M01.ZB35.02 R

NOTE: Machine drill bits need to be set to 57 mm in length to achieve proper bore depth.

Twist drill bits – high speed steel



VPB-5



Twist drill bit



*Chuck for DB-2 mm

Part no.

VPB-5 centering bit

VPB-5

Ø2 mm left

DB-2mm

Ø2.5 mm right

DB-2.5mm

Ø5 mm right

DB-5mm

Ø8 mm right

DB-8mm

Ø10 mm right

DB-10mm

Ø10 mm chuck for DB-2 mm

DB-10 x 2mm

*Used to pilot bore for screw-on hinges with MINIPRESS or MINIDRILL