



**HPL**

High Pressure Laminate

 **pionite**<sup>®</sup>

A Panolam Surface Systems Brand.



NEW




# KNOT QUITE

---




## menswear™

COLLECTION



**Knot Quite Menswear™** draws inspiration from the timeless textiles created by icons of the fashion industry. This collection embodies the confidence of a well-tailored suit or dress but with the playful twist of a creative bow tie or scarf. Influences range from Coco Chanel who combined comfort and practicality with beauty and elegance, to Ralph Lauren who combined subtle fabrics with **bold graphic** statements. The collection features a timeless palette that transcends short-lived trends. Classic natural tones are accented by deep coral, khaki green, deep wine, and are grounded by warm grays. The combination of design and color makes this versatile collection appropriate for any market segment.

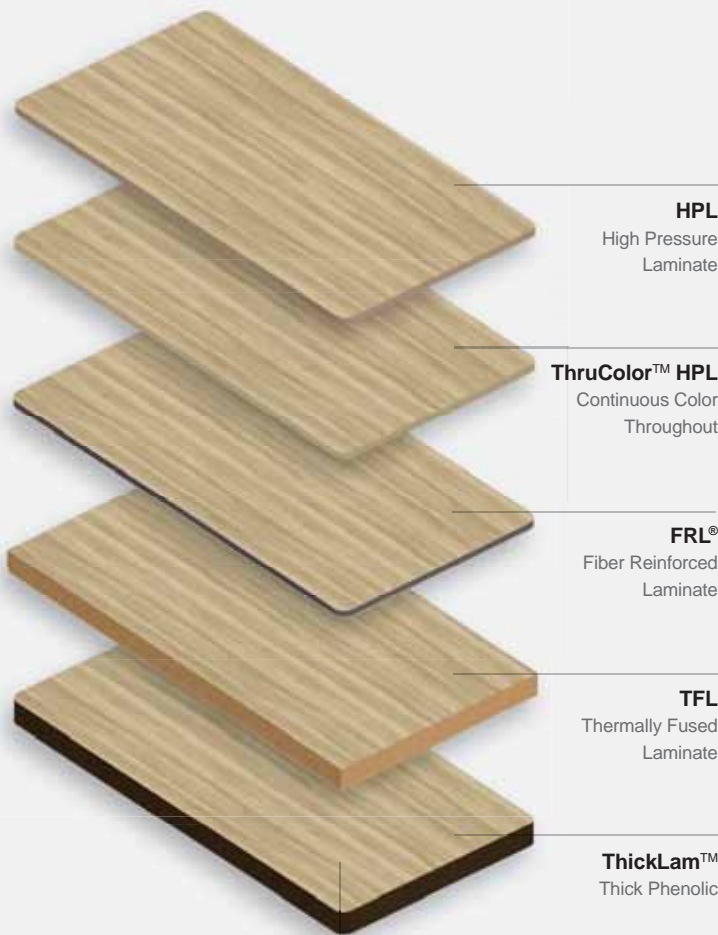


**Knot Quite Menswear™** is a grouping of 24 new designs – including 3 woodgrains, 12 abstracts, 3 solids and 6 Inspira™ Digital patterns that can be used in a variety of market segments.

# Multiple surfaces. One system.

## Same design. Different substrates.

Our goal is to help bring your vision to reality without compromise. As your full surface solution provider, we are here to help navigate the many design and substrate options available to help you achieve your desired aesthetic, performance, and budgetary attributes for every project.



Pattern: Picnic in the Park

## Finish Options

Pionite high pressure laminates are available in 25 different finishes designed to enhance the look and texture of any project. Please contact your local Pionite representative or visit [pionite.com](http://pionite.com) for finish samples, grade and sheet availability. For quicker processing of your sample request, kindly use the designated finish code as listed below.

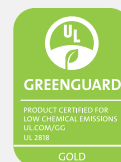
- Aged Bark (AB)** Medium-grain weathered wood
- Ashwood (AW)** Fine woodgrain with cathedral
- Barnboard (BB)** Linear plank, matte woodgrain
- Crystal (CR)** Fine pebbled finish, medium gloss
- Evolution (EV)** Smooth surface enhanced by contrasting matte and gloss organic texture
- Fineline (FL)** Deep, fine-grained linear pattern
- Gloss (GL)** High gloss, smooth finish
- Granite (GR)** Polished stone textured finish
- Groovy (GV)** Eclectic abstract pattern that appears to create motion
- Hex (HX)** Geometric repeating pattern, low gloss
- LineZ (LZ)** Deeply embossed woodgrain
- Medium Gloss (MG)** Medium gloss, smooth finish
- Metalz (MZ)** is a metal look as the name implies, a high gloss metal finish
- Natural Stone (NS)** Matte surface accentuates the indentations offering a time-worn look
- Natural Wood (NW)** Real wood texture. Low gloss
- Polished Velvet (PV)** Smooth, textured furniture finish
- Slate (SL)** Deeply embossed slate finish
- Soft Leather (LR)** Finely grained leather finish
- StoneX (SX)** Natural and polished stone surface
- Super Matte (SM)** Smooth, non-reflective surface
- Tactile Weave** A modern woven fabric in look and feel, low gloss
- Textured / Suede (SD)** Low gloss, textured finish
- Timberline (TL)** Wide grained linear texture
- Velvet (VE)** Smooth, finely grained surface
- Wood Essence (WE)** Natural, linear woodgrain finish

## Environmental Features

- Pionite's low emission products are GREENGUARD® certified.
- By formulating our own resins, we can assure you of an eco-conscious manufacturing process.
- Pionite laminates are easy to clean without using harsh chemicals.
- Our products are manufactured with kraft and decorative paper from recycled or renewable sources to help preserve our forests and promote a healthier environment.
- Distribution centers are strategically located across the country to reduce the use of fossil fuels when delivering Pionite products.
- Pionite HPL surfaces do not support bacterial growth making them an ideal choice for healthcare, education and food service installations.



The mark of  
responsible forestry





# HPL



For over 70 years, Pionite has developed materials that meet the aesthetic criteria of the most demanding architects and designers. Pionite HPL comes in 200+ colors and patterns with a variety of finishes and in-house custom printing capabilities. It is an ideal surface for almost any horizontal or vertical application. The Pionite family of products has been developed to withstand the friction, impact, and ever-changing conditions of life. With Pionite high pressure laminates, the possibilities are virtually endless.



**pionite**

A Pandlam Surface Systems Brand.

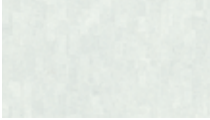
<b>AT970 LR</b> Mud Pie	<b>AT371 SD</b> Cressida	<b>AT710 SD</b> Gold Pannin	<b>AT106 SD</b> Grandiose Grid	<b>AT301 SD</b> Beige Linen	<b>PF451 SD</b> Gridlock in L.A.	<b>AT231 SD</b> Manila Linen	<b>AT981 SD</b> Coriander Fiber	<b>HP451 SD</b> Pepperdust	<b>SG224 SD</b> Stonedust	<b>ST606 SD</b> Taupe	<b>SG210 SD</b> Greige	<b>AT965 SD</b> Mellow Marron	<b>SG228 SD</b> Slate	<b>ST604 SD</b> Nubian Brown
<b>AE011 CR</b> Charcoal Chromatix	<b>AV674 SD</b> Olive Organic	<b>AV250 SD</b> Passin Through	<b>AV981 SD</b> IL Palio Papel	<b>AT680 SD</b> Travelin Light	<b>AT109 SD</b> Soothing Pebble Beach	<b>AT991 SD</b> Wheat Fiber	<b>AT660 SD</b> Cresscross	<b>SG241 SD</b> Folkstone Gray	<b>SG204 SD</b> Mercury	<b>SG246 SD</b> Dolphin Gray	<b>SG213 SD</b> Opti Gray	<b>SG214 SD</b> Bankers Gray	<b>HP565 SD</b> Storm Gray	<b>SE101 SD</b> Black

**KNOT QUITE**  
**menswear™**  
COLLECTION

<b>AG021 SD</b> Sable	<b>AG180 SD</b> Meteorite Metallo	<b>AG371 SD</b> Cardamom Fiber	<b>AG471 SD</b> Cinder Gray Concrete	<b>AV999 SD</b> Game Keepers Tweed	<b>AG740 TW</b> Knickerbocker	<b>WH10 SD</b> House of Chevron	<b>AT435 TW</b> Tailor-Made	<b>AP280 SD</b> Belle's Bow	<b>AP385 SD</b> Shetland Tweed	<b>AP290 SD</b> It's a Wrap	<b>W626 SD</b> Angel White	<b>SW888 HX</b> Nimbus White	<b>SW813 SD</b> Ice White	<b>SG211 SD</b> Ingot Gray
<b>AE021 SD</b> Graphite Spektrum	<b>AG031 SD</b> First N Main	<b>AG801 SD</b> Jumping in Puddles	<b>AG500 LR</b> Cake Batter	<b>AV830 SD</b> Virescent Silk	<b>AT861 SD</b> Argyle Socks	<b>AT840 SD</b> Comeback Camel	<b>AT505 SD</b> Argyle Sweater	<b>AT840 SD</b> Comeback Camel	<b>AT505 SD</b> Argyle Sweater	<b>AT840 SD</b> Comeback Camel	<b>SW811 SD</b> White	<b>SW836 SD</b> Winter White	<b>SG254 SD</b> Ash Gray	<b>SG203 SD</b> Pumice
<b>AE100 PV</b> Little Black Dress	<b>AE060 SD</b> Stargazing	<b>AG611 SD</b> Graveyard of the Atlantic	<b>AG750 SD</b> Daydreaming	<b>AG730 SD</b> Yorkshire Tweed	<b>WE280 NW</b> Windsor Elm	<b>WE250 NW</b> Ascot Elm	<b>AY135 SD</b> Luminescent Silk	<b>AY160 SD</b> In the Trenches	<b>AW700 SD</b> Beau-Tie	<b>AW700 SD</b> Beau-Tie	<b>SW806 AW</b> Carnation White	<b>SW803 SD</b> Eggshell White	<b>AW200 SD</b> Bridal Blanco	<b>SG208 SD</b> Limestone
<b>AB221 SD</b> Cradle of Liberty	<b>AB400 SD</b> Happy Hour	<b>AG130 SM</b> Cookies & Cream	<b>AV971 SD</b> Moonlighting Papai	<b>AG640 SD</b> Soothing White Caps	<b>AW300 SD</b> Love Letters	<b>AT440 SD</b> Connected Cubes	<b>AT988 SD</b> Beachcomber	<b>ST655 SD</b> Almond	<b>SY914 SD</b> Primary Yellow	<b>SY913 SD</b> Forsythia	<b>S0312 SD</b> Bittersweet	<b>SR505 SD</b> Navajo Red	<b>SR520 SD</b> Primary Red	<b>SP401 SD</b> Royal Burgundy
<b>AB300 SD</b> Head Over Heels	<b>MG125 SD</b> Hugo Gray	<b>AG601 SD</b> Pearl of the Orient	<b>PF660 SD</b> Negotiating in Geneva	<b>AG081 SM</b> Sugar Pie	<b>AG415 SD</b> Old Friend	<b>AW871 SD</b> Vanilla Fiber	<b>AV751 SD</b> Celery Fiber	<b>AV208 SD</b> Soothing Sea Mist	<b>SG240 SD</b> Moss Gray	<b>SV750 SD</b> Fresh Cut Grass	<b>SV709 SD</b> Springtime	<b>SR537 FL</b> First Kiss	<b>SR525 SD</b> Sweet 16	<b>SP414 SD</b> Tutti Frutti



**WF181 SD**  
Ice Fishin'



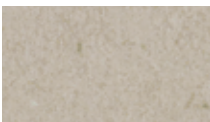
**WF131 SD**  
Yana



**PFA42 SD**  
Tea Party in Boston



**AG561 SD**  
Cubicle Papel



**AT650 SD**  
Cavalcade South



**WW185 SD**  
Oatmeal Cookie



**WC652 WE**  
Coastal Cottage



**WP120 SD**  
Leave Likatze



**SV713 SD**  
Surfin' USA



**SB027 SD**  
Summer Vacation



**SB006 SD**  
Indigo Blue



**SB009 SD**  
Royal Blue



**SB040 SD**  
Blueberry Hill



**SB007 SD**  
Navy Blue



**SB005 SD**  
French Blue



**WX440 SD**  
Black Forest Cake



**WA120 SD**  
Afternoon Nap



**WT790 SD**  
Wedding Cake



**WT790 BB**  
Wedding Cake



**W0680 LZ**  
Crackle Crunch



**WP140 SD**  
Licorice Stick



**WP110 SD**  
Looks Likatze



**WZ460 WE**  
Toasted Coconut



**WA110 SD**  
Catching Fireflies



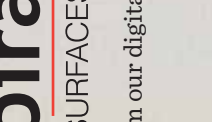
**WT860 SD**  
Tailgating



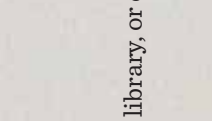
**WX800 SD**  
Lunar Legno



**WC105 SD**  
Tryptoo Savathree



**WT870 SD**  
Sleeping In



**WT870 TL**  
Sleeping In



**WY131 SD**  
Slivo



# inspira™

## DIGITAL SURFACES

Choose from our digital library, or create your own.

**WC210 PV**  
Chocolate Malt



**WC230 PV**  
Butter Toffee



**WC210 PV**  
Chocolate Malt



**WC210 PV**  
Chocolate Malt



**WC210 PV**  
Chocolate Malt



**WC210 PV**  
Chocolate Malt



**WC210 PV**  
Chocolate Malt



**WC210 PV**  
Chocolate Malt



**WC210 PV**  
Chocolate Malt



**WC210 PV**  
Chocolate Malt



**WC210 PV**  
Chocolate Malt



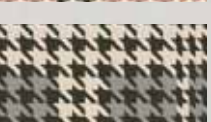
**WC210 PV**  
Chocolate Malt



**WC210 PV**  
Chocolate Malt



**WC210 PV**  
Chocolate Malt



**WC210 PV**  
Chocolate Malt



**WC095 SD**  
Ornate Oak



**WC421 SD**  
Oiled Cherry



**WC431 PV**  
Millwork Cherry



**WC421 SD**  
Oiled Cherry



**WC421 SD**  
Oiled Cherry



**WC421 SD**  
Oiled Cherry



**WC421 SD**  
Oiled Cherry



**WC421 SD**  
Oiled Cherry



**WC421 SD**  
Oiled Cherry



**WC421 SD**  
Oiled Cherry



**WC421 SD**  
Oiled Cherry



**WC421 SD**  
Oiled Cherry



**WC421 SD**  
Oiled Cherry



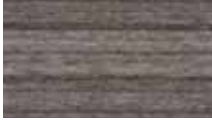
**WC421 SD**  
Oiled Cherry



**WC421 SD**  
Oiled Cherry



**WW050 SD**  
Walnut Grove



**WW120 WE**  
A Good Book



**WW011 SD**  
Kingsley



**WA090 SD**  
Dining by Candlelight



**WX600 SD**  
Mocha Almond Fudge



**WX170 SD**  
Tiramisu



**WX15 SD**  
Aimboo Savatze



**WX041 SD**  
Anigre



**WX110 SD**  
Smooth Paddlin



**HP689 SD**  
Backwoods Sycamore



**WW601 SD**  
Cinnamon Noce



**WW561 SD**  
Spice Walnut



**WC521 SD**  
Shaker Cherry

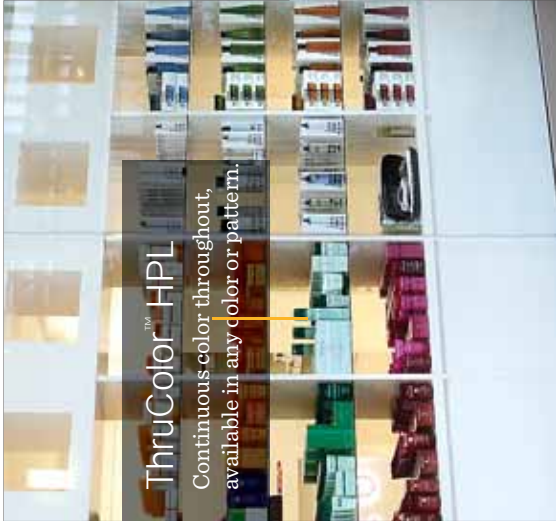


**PFA48 SD**  
Slipping Seattle Java



**WC411 SD**  
Yorkshire Cherry





<b>AT161 SD</b> Rocky Mountain High	<b>WA001 SD</b> Clear Ash	<b>WM115 SD</b> Sugar Maple II	<b>WM221 SD</b> Amber Curly Maple	<b>W0951 SD</b> Fine Oak	<b>HP360 SD</b> Afternoon Showers	<b>WP125 SD</b> Seems Likatré	<b>WZ150 SD</b> Peanut Brittle	<b>WW971 SD</b> Gunstock Savoy Walnut	<b>WY031 SD</b> Formal Mahogany	<b>WC331 PV</b> Victorian Cherry
<b>MT330 SD</b> City of Lights	<b>WE261 SD</b> White Elm	<b>WE360 SD</b> America's Pastime	<b>WA030 SD</b> Picnic in the Park	<b>WW075 SD</b> Zen	<b>W0862 SD</b> Hearth Oak	<b>WX230 SD</b> Opio Pimatré	<b>WP130 SD</b> Molten Lava	<b>HP359 PV</b> Thunderstorm	<b>WX421 PV</b> Witchcraft	<b>WY351 PV</b> Jewel Mahogany
<b>MV570 SL</b> Polar Cap	<b>ME100 SD</b> Faded Memories	<b>AM141 SD</b> Rock of Ages	<b>MW550 SD</b> White Fiesta	<b>AG381 SD</b> Mineral Italic	<b>AV781 SD</b> Sage Coral	<b>MR120 SX</b> Louise	<b>AT191 SD</b> Viola	<b>MT310 GR</b> Frederick	<b>MT390 SX</b> Hazel	<b>MR125 SX</b> Theodore
<b>MG180 SD</b> Galactic Dust	<b>MC170 SL</b> Hedgegrow	<b>MW575 SD</b> Chalk Impertale Marble	<b>MG190 SD</b> Rice Lake	<b>MT500 SD</b> Rock Around the Clock II	<b>MG071 GR</b> Bernard	<b>AT181 SD</b> Agatha	<b>MT440 SD</b> Cornwall	<b>MT250 SD</b> Man on the Moon	<b>MG130 SX</b> Abraham	<b>AG041 SX</b> Shooting Star
<b>MR130 SD</b> Rose Granite	<b>AG011 SD</b> Estrella	<b>MG115 SX</b> Moon Dust	<b>ME051 SD</b> Arctic Flash	<b>MG120 SX</b> Harold	<b>ME011 EV</b> Pyrenees Marble	<b>MG160 SL</b> Upland Stone	<b>AG361 SD</b> Graphite Italic			

**Please note:**

- Printed patterns are shown at a reduced scale from representative segments of large sheets
- Colors may differ slightly from the actual product

- Ideal for horizontal or vertical applications in all commercial and residential environments
- Available in 25 different finishes
- Please contact Pionite or your local distributor for samples before specifying

**Knot Quite Menswear™ Collection**

Introducing our latest collection of HPL products. The Pionite Knot Quite Menswear Collection is a blend of sophisticated woodgrains, classic yet dynamic abstracts, and solids.

 Denotes NEW to wallboard for 2020





## Technical Specifications

Technical information listed below applies to high pressure decorative laminates. For additional technical data, specification sheets, and three-part CSI, visit [pionite.com](http://pionite.com).

### STANDARD LAMINATE

Pionite Standard Laminate is designed for either horizontal, vertical, or postforming applications. Typical uses include countertops, tables, vanities, interior doors, cabinets, contract furniture, and retail store fixtures. Three standard grades of Pionite® laminate are suitable for most applications.

#### G48 General Purpose Grade

Nominal Thickness 0.048"/1.2 mm (NEMA HGS). Most often used in horizontal applications where high-impact resistance and a durable, decorative surface is required.

#### F39 Postforming Grade

Nominal Thickness 0.039"/1.0 mm (NEMA HGP). Designed for manufacturing countertops and other horizontal surfaces where the laminate may be heated and rolled over the substrate edge to eliminate seams.

#### F28 Postforming Grade

Nominal Thickness 0.028"/0.7 mm (NEMA VGP). Designed for surfaces where impact resistance is less critical.

### SPECIALTY PRODUCTS

#### ThruColor™ HPL Laminate

ThruColor HPL is intended for use in applications where the edge of laminate contributes to the aesthetics of the final product. Pionite's elegant manufacturing process provides a second generation color-through laminate that is more flexible and much less likely to chip than other color-through laminates. ThruColor HPL colors and their corresponding colors in standard Pionite are not exact matches. Sample evaluation is recommended. Ideal for high-wear horizontal and vertical applications such as high-end furniture.

#### ChemGuard: Chemical Resistant Laminate

Available in thicknesses up to 1" (25.4 mm). Pionite ChemGuard incorporates the decorative features of high pressure laminate into a durable, chemical resistant surfacing material. The unique manufacturing process of Pionite ChemGuard results in a product with excellent chemical resistant properties. This feature ensures that the ChemGuard surface is more chemical resistant than competitive laminate. Pionite ChemGuard's superior chemical resistant surface cannot be softened with heat for postforming. ChemGuard is ideal for education labs, culinary testing facilities, photographic darkrooms, nurses stations, medical, dental, and veterinary work areas and mortuaries. Thicker ChemGuard laminate can be used as structural components in laboratory bench tops precluding the use of a substrate.

#### ThickLam™ Thick Phenolic Core Laminate

Available in thickness up to 1" (25.4 mm). Designed for applications where the decorative surface must contribute to the structural stability of the finished assembly. ThickLam offers the same chemical resistance properties as standard Pionite laminate. ThickLam thick phenolic can be manufactured with enhanced chemical resistance. Available in the following configurations: decorative both sides and decorative one side. Available with black or brown edge. Typical uses include toilet and dressing room privacy partitions, tabletops, doors, workstations, wall panels, and desktops. ThickLam laminate can be manufactured to provide Class A fire test performance

#### Fire Rated Laminate

Designed for applications where a decorative surface must resist combustion and inhibit smoke production. Fire rated laminate is classified by Underwriter's Laboratory, Inc. under File R6581 in both the US and in Canada. Please refer to Pionite Fire Rated Technical Bulletin for products available as IMO certified. Typical uses include elevator cabs, hospitals, schools, airports, hotels, and other public buildings where strict fire codes apply.

#### Hi-Wear Laminate

Designed for applications requiring increased abrasion and scuff resistance. The product offers more than five times the wear resistance of standard grade laminate. Due to the manufacturing process, Pionite Hi-Wear laminate will vary in color from corresponding colors in standard Pionite. This effect is more pronounced in darker colors and patterns. Sample evaluation prior to order placement is recommended. Typical uses include buffet counters, salad bars, checkout counters, kickboards, bartops, and restaurant counters.

#### ESD (Electrostatic Dissipative Laminate)

Developed specifically for surfacing workstations where static-sensitive electronic components are manufactured and assembled. ESD is postformable. Works well in hospitals, medical facilities, and clean rooms as the surface will not attract dust or dirt particles. Due to the unique composition of this product, SDL colors and their corresponding colors in standard Pionite are not exact matches. Sample evaluation is recommended.



ONE CORPORATE DRIVE, SUITE 725  
SHELTON, CT 06484 | 877.726.6526  
[WWW.PANOLAM.COM](http://WWW.PANOLAM.COM)

