

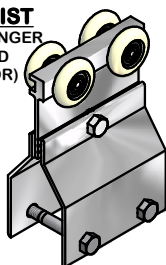
C-107-4 HANGER FOR C-104 OR C-108 TRACK

INSTRUCTION SHEET



PARTS LIST

C-107-4 HANGER
ASSEMBLED
(2 PER DOOR)



5/16"-18 X 2-1/2"
HEX BOLT
(2 PER HANGER)



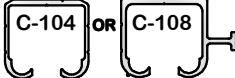
5/16" PLAIN
WASHER
(2 PER HANGER)



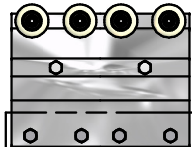
5/16" HEX NUT
(2 PER HANGER)



EXTRUDED
ALUMINUM TRACK



OR C-107-8 HANGER
ASSEMBLED
7" WIDE
(2 PER DOOR)



C-107-8
DETAIL "A"

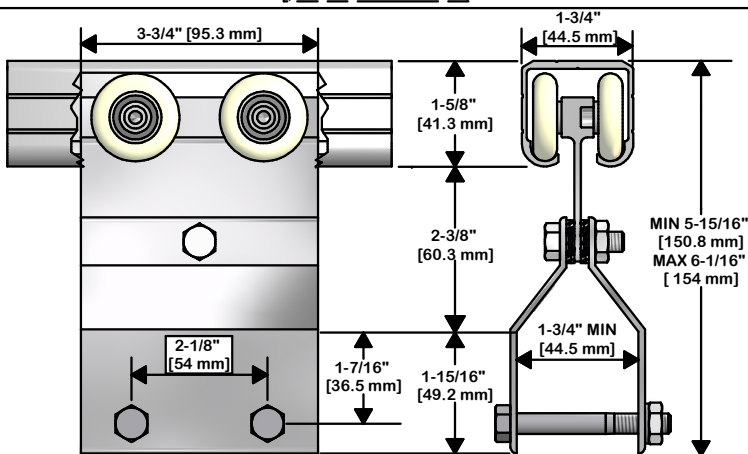
SPECIFICATIONS:

-LOAD CAPACITY:
C-107-4 HANGERS:
350 LBS PER DOOR
C-107-8 HANGERS:
600 LBS PER DOOR

-HEAVY-DUTY
PRECISION BALL
BEARING WHEELS
WITH NYLON TIRE.

-CLAMP-TYPE FACE
MOUNTING DESIGN.
ADJUSTABLE FOR
DOOR THICKNESS OF
1-3/4" - 2-1/4".

-FOR BY-PASSING,
BI-PARTING, POCKET,
AND SURFACE
MOUNT/BARN STYLE
APPLICATIONS.



STEP 1

DETERMINE DOOR SIZE/HEADER HEIGHT BASED ON DIMENSIONS SHOWN IN
DETAIL VIEWS AND CLEARANCE REQUIRED BELOW DOOR.

STEP 2

LOCATE AND DRILL 21/64"Ø HOLES FOR BOLTS USING THE DIMENSIONS
SHOWN IN ILLUSTRATION. NOTE: IF USING CAS-2 DOOR STOP ADD 2" TO
DIMENSION FROM EDGE OF DOOR.

STEP 3

PREPARE DOOR FOR INSTALLATION OF OPTIONAL PRODUCTS IF PURCHASED
SUCH AS GUIDE CHANNELS, CUP PULLS, DOOR LOCKS, ETC. INDIVIDUAL
INSTRUCTIONS ARE PROVIDED WITH THE RESPECTIVE PRODUCT.

STEP 4

PLACE HANGER ASSEMBLY ON DOOR AND SECURE CLAMPS TO DOOR WITH
5/16"-18 HEX BOLTS(2), 5/16" WASHERS(2), AND 5/16" HEX NUTS(2).

STEP 5

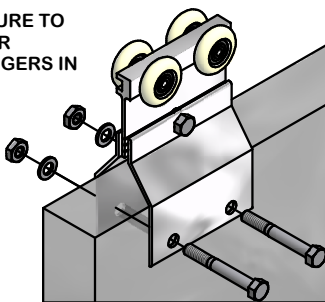
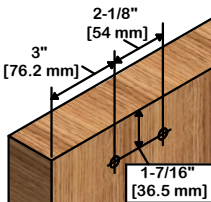
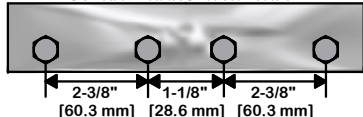
PLACE DOOR AND HANGERS INTO C-104 OR C-108 TRACK AND SECURE TO
HEADER. ALTERNATE: IF TRACK ENDS ARE NOT ACCESSIBLE AFTER
MOUNTING: AFTER PREPARING DOOR FOR HANGERS, INSTALL HANGERS IN
TRACK AND MOUNT TRACK. RAISE DOOR INTO POSITION BELOW
HANGERS & BOLT THROUGH PREDRILLED HOLES.

STEP 6

LOCK DOOR HEIGHT
AND PLUMB WITH
1/2" WRENCH ON
HEX NUT OF
CENTER BOLT.

DETAIL "A" OF C-107-8 HANGER HOLE LOCATIONS

OVERALL HANGER WIDTH: 7"



K.N. CROWDER MFG. INC.

1220 BURLOAK DRIVE
BURLINGTON, ONTARIO, CANADA, L7L 6B3
TELEPHONE: 905-315-9788 - FAX: 905-315-8090
TOLL FREE FAX: 1-800-567-0123

K.N. CROWDER INC.

210 EIGHTH STREET SOUTH
LEWISTON, NEW YORK, U.S.A. 14092
TOLL FREE TELEPHONE: 1-866-999-1KNC (1562)
TOLL FREE FAX: 1-800-567-0123

WEBSITE: www.kncrowder.com --- E-MAIL: customerservice@kncrowder.com