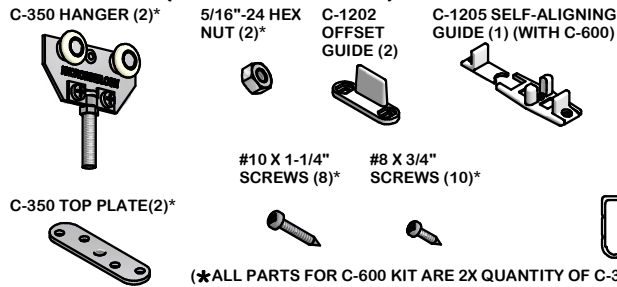


C-350/C-600 SERIES SLIDING DOOR KIT INSTRUCTION SHEET FOR 3/4" TO 1-3/8" DOORS



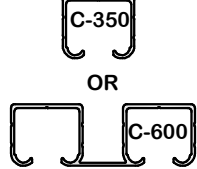
PARTS LIST (FOR 1 DOOR KIT)



(★ALL PARTS FOR C-600 KIT ARE 2X QUANTITY OF C-350 KIT)

SPECIFICATIONS:

- LOAD CAPACITY: 75 LBS PER DOOR.
- CAN BE MOUNTED SIDE BY SIDE FOR BY-PASS APPLICATIONS
- 3 NYLON WHEELS PER HANGER.
- FEATURES VERTICAL ADJUSTMENT BY THREADED TOP PLATE AND LOCK-NUT.

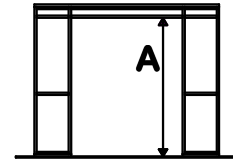


INSTALLATION INSTRUCTIONS

STEP 1

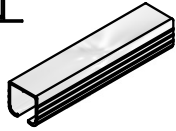
DETERMINE DOOR SIZE/HEADER HEIGHT BASED ON DIMENSIONS SHOWN IN DETAIL VIEWS AND CLEARANCE REQUIRED BELOW DOOR:

- MINIMUM OPENING HEIGHT (A) = DOOR HEIGHT + 2-5/8"
- MAXIMUM OPENING HEIGHT (A) = DOOR HEIGHT + 3-1/2"



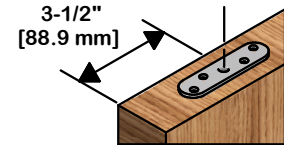
STEP 2

CUT TRACK TO LENGTH. TRACK LENGTH SHOULD BE EQUAL TO FINISHED OPENING SIZE LESS 1/8". INSERT C-350 HANGERS INTO TRACK AND SECURE TRACK TO HEADER WITH #8 X 3/4" SCREWS (6)*. **NOTE: CLIP SCREWS MUST BE ACCESSIBLE AND FACE SAME SIDE OF OPENING (I.E. INSIDE OF CLOSET).**



STEP 3

A) LOCATE CLEARANCE HOLE FOR HANGER STUD 3-1/2" FROM EACH EDGE OF DOOR. DRILL WITH 3/8" BIT AT LEAST 1-1/2" DEEP. B) CENTER TOP PLATE OVER HOLE WITH FLAT SIDE UP, MARK SCREW HOLE LOCATIONS AND PRE-DRILL WITH 1/8" BIT AT LEAST 1" DEEP.

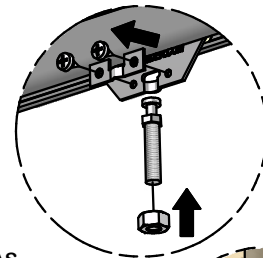


STEP 4

MOUNT TOP PLATES ON DOOR AND SECURE WITH #10 X 1-1/4" SCREWS (4 PER TOP PLATE).

STEP 5

USING A PHILLIPS SCREWDRIVER, REMOVE THE CLIP SCREWS ON HANGER TO REMOVE BOLT. PLACE ONE 5/16"-24 HEX NUT ON BOLT AND SCREW BOLT INTO TOP PLATE ON THE DOOR.

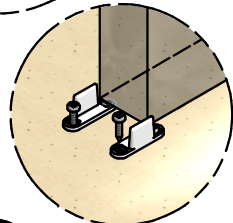


STEP 6

PREPARE DOOR FOR INSTALLATION OF OPTIONAL PRODUCTS SUCH AS GUIDE CHANNELS, CUP PULLS, DOOR LOCKS, ETC., AS REQUIRED. INDIVIDUAL INSTRUCTIONS ARE PROVIDED WITH THE RESPECTIVE PRODUCT.

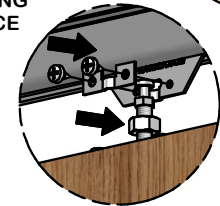
STEP 7

LOCATE C-1202 GUIDES AND SECURE TO FLOOR WITH #8 X 3/4" SCREWS (4). IT MAY BE NECESSARY TO INSTALL DOOR, DETERMINE GUIDE LOCATION, REMOVE DOOR AND THEN SECURE GUIDES TO FLOOR. IF USING OPTIONAL C-201 GUIDE CHANNEL, INSTALL C-200 GUIDE IN PLACE OF THE C-1202 GUIDES. IF USING C-600 SERIES AND C-238 GUIDE THRESHOLD, INSTALL IN PLACE OF C-1205 GUIDES.



STEP 8

LOCATE DOOR UNDER HANGERS AND LIFT TO PLACE BOLTS INTO HANGER SLOT AND SECURE WITH THE CLIPS AND SCREWS PREVIOUSLY REMOVED IN STEP 5. DO NOT OVER TIGHTEN SCREWS.

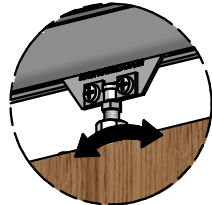


STEP 9

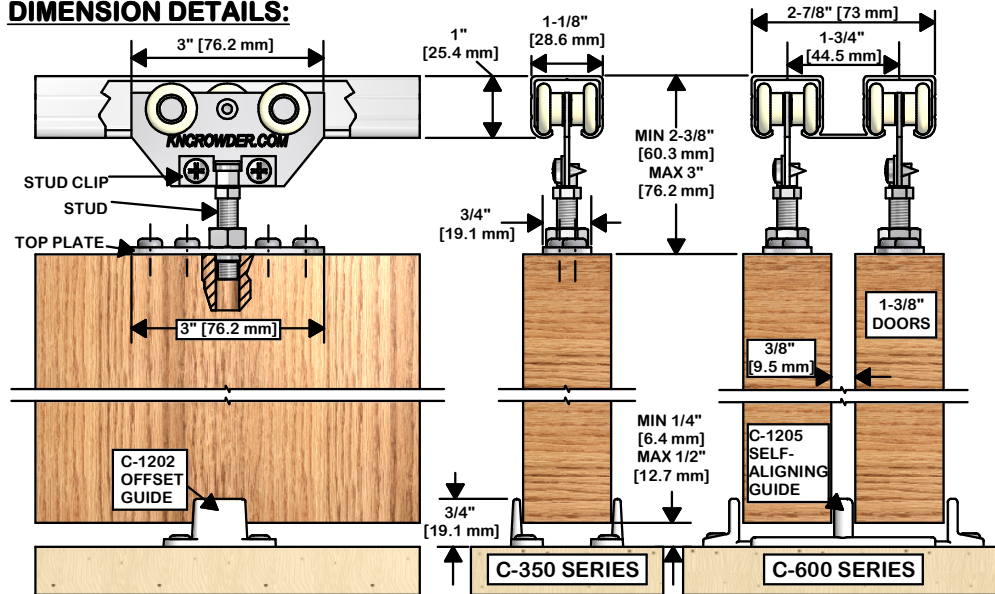
ADJUST DOOR HEIGHT AND PLUMB VIA HEX SECTION OF BOLT WITH 3/8" WRENCH. LOCK ADJUSTMENT BY TIGHTENING HEX NUT AGAINST TOP PLATE. RE-TIGHTEN CLIP SCREWS.

STEP 10

IF USING OPTIONAL C-100 DOOR STOP, INSTALL IN TRACK AT DESIRED LOCATION.

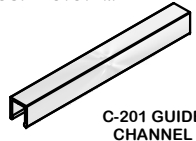


DIMENSION DETAILS:

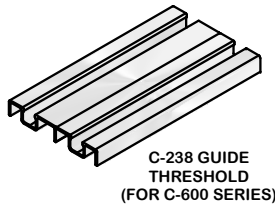


OPTIONAL PRODUCTS

GUIDE SYSTEM:



C-201 GUIDE CHANNEL



C-238 GUIDE THRESHOLD (FOR C-600 SERIES)



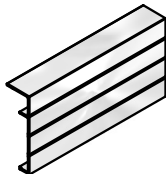
C-200 GUIDE



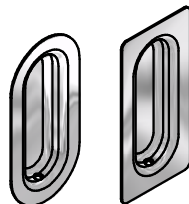
C-200B SPRING LOADED GUIDE



C-100 DOOR STOP



C-130 FASCIA



C-70 C-75 DOOR PULLS



C-35 DOOR LOCK



K.N. CROWDER MFG. INC.
1220 BURLOAK DRIVE
BURLINGTON, ONTARIO, CANADA, L7L 6B3
TELEPHONE: 905-315-9788 - FAX: 905-315-8090
TOLL FREE FAX: 1-800-567-0123

K.N. CROWDER INC.
210 EIGHTH STREET SOUTH
LEWISTON, NEW YORK, U.S.A. 14092
TELEPHONE: 1-716-754-8247
TOLL FREE FAX: 1-800-567-0123

WEBSITE: www.kncrowder.com -- E-MAIL: customerservice@kncrowder.com