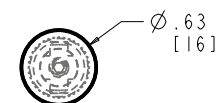
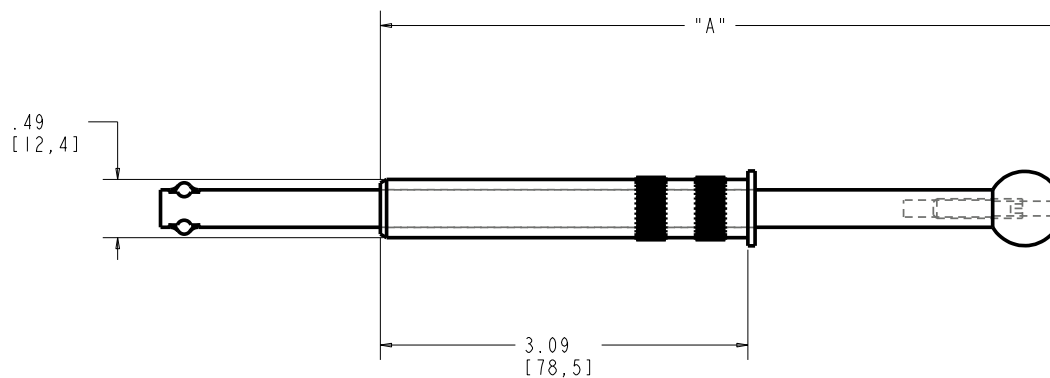


	"A"
MIN	3.73 [94.8]
MAX	7.26 [184.3]

PART NUMBER	FINISH
IVR7-CR	CHROME
IVR7-SN	SATIN NICKEL
IVR7-ORB	OIL RUBBED BRONZE



CUSTOMER DRAWING

This drawing is the property of Rev-A-Shelf (RAS) and is disclosed in confidence to the extent its subject matter is original to RAS. Any vendor receiving this drawing from RAS shall hold and use this drawing for the sole benefit of RAS and shall not disclose it to, or use or reproduce it for any third party, or perform any act adverse to the interest of RAS with respect to this drawing without the express written permission of RAS. Vendors shall not revise any physical, dimensional or performance characteristic unless authorized by Rev-A-Shelf Engineering.

REV.	DATE	BY	DESCRIPTION OF CHANGE
A	2/12/08	PFC	ECN08-011

INCH [MM]	AMERICAN PROJECTION	DRAWN	BY	DATE	REV-A-SHELF, Inc.	
		PFC		3/12/08	SIZE B	7" INSERT VALET ROD
TOLERANCES		MATERIAL		DRAWING NO.		SCALE 1:1
DECIMALS .XX ±.02 [.5mm]		SEE NOTES		IVR7-CUSTOMER		SHEET 1 OF 2
ANGLES ±1/2°		FINISH		PART NO.		
FRACTIONS ±1/32 [.8 mm]		SEE NOTES		IVR7		