



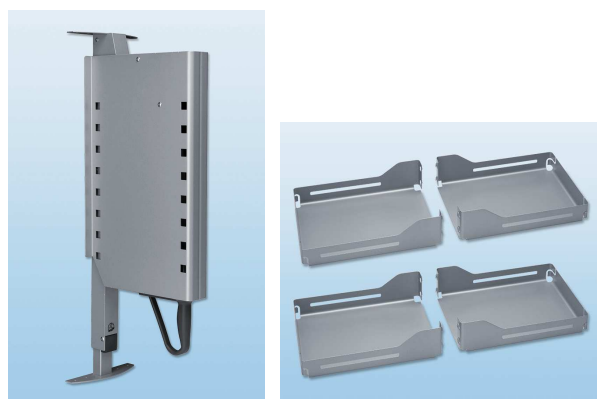
Pegasus offers a new type of shelves to increase functionality.



Product features

- The ergonomic lift system for high overhead wall units.
- Easy installation of the central post (top and bottom mounting).
- Clip system on the post makes the mechanism easy to adjust it to the interior height of the cabinet.
- Weight loading adjustment with a simple rotating device.
- Ergonomic metal shelves allowing access on all sides (come with anti slip mat)
- Customer can customize by doing his own trays and using # 5088110 brackets to attach them to the post.
- New trendy grey aluminum color.

- 1- Height adjustment
- 2- Ergonomic handel
- 3- Weight adjustment



For interior height:

677mm to 980mm
(26 3/8" to 38 1/2")

For interior width:

862mm (33 7/8") for #5085110 baskets

1162mm (45 3/4") for #5087110



Mechanism Set of 4 baskets

Code	Description	Color	Replaces
5083110	LIFT MECHANISM 0-12KG	Alu grey	5087100
5084110	LIFT MECHANISM 10-20KG	Alu grey	5097100
5085110	SHELVES 355MM+ANTI SLIP (4)	Alu grey	5088140100
5087110	SHELVES 505MM+ ANTI SLIP (4)	Alu grey	5089140100
5088110	CUSTOM TRAY BRACKETS (OPTION)	Alu grey	50900100