



The CPR gun comes equipped with both a pressure reduced air cap 23-2101 and an HVLP air cap 23-1301 **for areas requiring HVLP compliance.**

23-2101 - consumes 11 cfm at 29 psi gun inlet.

23-1301 - consumes 13.5 cfm at 29 psi gun inlet.

Both air caps can be used with the full range of fluid orifices listed below.

AIR CAPS, FLUID ORIFICES AND NEEDLES AVAILABLE FOR THE CPR SPRAY GUN

AIR CAPS	APPROXIMATE CFM	AVAILABLE FLUID NOZZLES TIPS	NEEDLES / marking on needle	INCLUDED IN CAT PACKS
23-2101 (Compliant) (0.8 mm - 1.7 mm)	11	33-0208 0.8mm (.022")	40-1308 (308)	INCLUDED
		33-0210 1.0mm (.040")	40-1310 (310)	
		33-0212 1.2mm (.046")	40-1312 (312)	
		33-0213 1.3mm (.052")	40-1313 (313)	INCLUDED
23-1301 (HVLP) (0.8 mm - 2.2 mm)	13.5	33-0214 1.4mm (.055")	40-1314 (314)	
		33-0215 1.5mm (.059")	40-1315 (315)	
		33-0217 1.7mm (.070")	40-1317 (317)	INCLUDED
		33-0219 1.9mm (.075")	40-1319 (319)	
		33-0222 2.2mm (.086")	40-1322 (322)	

Operation and Maintenance Instructions for Spray Guns

Operation

1. Connect air supply hose at handle of gun. 5/16" air hose x 25 ft. max. length is recommended. Also, only use CAT high flow quick disconnects and avoid using any restrictive fittings for the air supply to the gun.
2. Connect a pressurized and regulated fluid supply to the gun fluid inlet.
3. Fluid flow can be controlled using the fluid control knob, this restricts flow by limiting needle travel. It is best to control fluid flow by the proper selection of orifice size that gives the desired material flow rate, with the fluid pressure adjusted between 3 and 9 psi. Then use the fluid control knob to "fine tune flow rate".
4. Fan width can be adjusted using the fan control knob. Turning the knob clockwise narrows the fan.

Maintenance

IMPORTANT! Routine cleaning and maintenance is essential to insure proper gun operation. Several states prohibit spraying solvent into the atmosphere and require the use of covered gun cleaner.

1. If a gun cleaner is being used, connect and clean the gun in the gun cleaner according to the manufactures instructions.
2. If a gun cleaner is not being used:
Remove air cap and clean separately using clean solvent.
Connect a pressurized solvent supply to the fluid inlet, trigger the gun allowing solvent to flow thru the gun until clean.

NOTE: Gun disassembly is not recommended for normal cleaning and maintenance.

Gun disassembly and reassembly instructions:

Have repair kit # 10-106 available before gun disassembly.

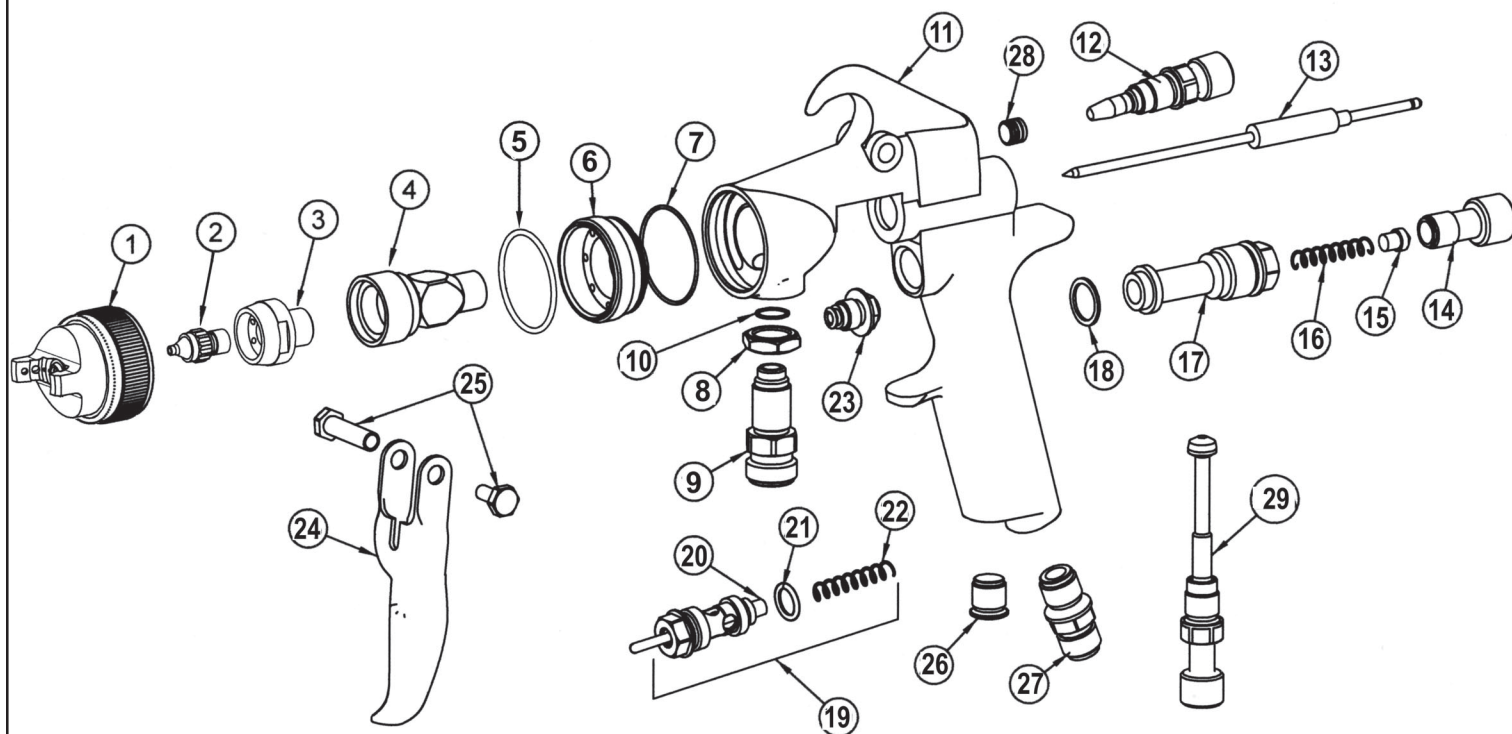
Disassembly

To remove nozzle carrier (4) and air cap adapter (6):

1. Remove the air cap (1), fluid tip (2), fluid nozzle body (4) and needle (13).
2. Remove needle seal cartridge (23).
3. Loosen locknut (8) and remove fluid inlet (9).
4. The fluid nozzle carrier (4) and air cap adapter (6) will now slide forward from the gun handle (11).

Reassembly

1. Install new o-rings (5) and (7) on the air cap adapter (6).
2. Install air cap adapter into gun body (11).
3. Install the locknut (8) onto the fluid inlet (9) as far as possible.
4. Install a new fluid inlet seal (10) into the recess area on the nozzle carrier (4) inlet port.
5. Slide the nozzle carrier (4) into the air cap adapter (6) as far as possible. Be sure the nozzle carrier extends into the hole at the back of the gun head. Install the needle seal cartridge (23) but do not tighten.
6. Rotate the nozzle carrier (4) until the fluid inlet port in the nozzle carrier is aligned with the threaded hole in the gun body (11). While in this position, insert the fluid inlet (9) and tighten firmly.
7. Tighten needle seal (23) to approx. 12 ft-lbs torque.
8. Tighten fluid inlet (9) to approx. 25 ft-lbs torque.
9. Tighten locknut (8) to approx. 33 ft-lbs torque.



ITEM NO.	PART NO.	DESCRIPTION	ITEM NO.	PART NO.	DESCRIPTION
1	See Air Cap Chart	Air Cap*	16	60-204	Needle Return Spring**
2	See Air Cap Chart	Fluid Tip*	17	60-201	Rear Bushing
3	33-1202	Fluid Nozzle Body	18	60-119	Seal**
4	60-L31H	Nozzle Carrier	19	60-1520	Air Valve Assembly
5	98-8026	O-Ring**	20	60-302	Air Valve Poppet
6	60-34H	Air Cap Adapter	21	60-125	Seal**
7	60-131	O-Ring**	22	61-1003	Air Valve Spring**
8	60-128	Locknut	23	60-1400	Needle Seal Cartridge**
9	60-126	Fluid Inlet	24	60-2101	Trigger
10	60-124	Fluid Inlet Seal**	25	60-1033	Trigger Pivot Screws
11	60-1120-CPR	Gun body	26	60-122	Plug (optional)
12	60-1504	Fan Control Assembly	27	60-104	Air Inlet Fitting
13	See Air Cap Chart	Fluid Needle*	28	98-0109	Allen Plug
14	60-202	Fluid Control Knob	29	60-1510	Inlet Air Control
15	60-205	Spring Seat**			

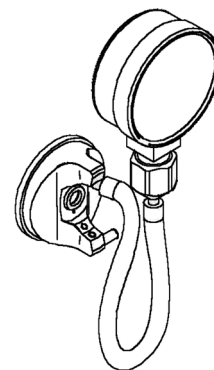
*See air cap selection chart on pages 1 & 4

**Indicates part included in repair kit # 10-106

FLUID NOZZLE / AIR CAP SELECTION CHARTS

CPR- Pressure Feed Spray Guns

MATERIAL TYPE	FLUID ORIFICE x AIR CAP	MAXIMUM PATTERN WIDTH	CFM
Very Thin less than 16 sec. Zahn #2 inks , dyes, solvents, stains	0.8 mm x 2101 or 1301 1.0 mm x 2101 or 1301	23-2101 13" 23-1301 12"	23-2101 11 cfm 23-1301 13.5 cfm
Thin 16 to 20 sec. Zahn #2 lacquers, enamels, primers, sealers	1.2 mm x 2101 or 1301 1.3 mm x 2101 or 1301	23-2101 13" 23-1301 12"	23-2101 11 cfm 23-1301 13.5 cfm
Medium 21 to 30 sec. Zahn #2 automotive base coat enamels, primers epoxies, urethanes automotive clear coat	1.3 mm x 2101 or 1301 1.4 mm x 2101 or 1301 1.5 mm x 2101 or 1301	23-2101 13" 23-1301 12"	23-2101 11 cfm 23-1301 13.5 cfm
Heavy over 30 sec. Zahn #2 heavy body primers high solid enamels high solid automotive coatings adhesives	1.7 mm x 2101 or 1301 1.9 mm x 1301 2.2 mm x 1301	23-2101 13" 23-1301 12"	23-2101 11 cfm 23-1301 13.5 cfm



HVLP Test Gage
P/N 23-1301-G
(not included in cat packs)

CPressure **R**educed *Smart Pack Includes:*

98-0104 3/8" socket
98-0112 Ratchet Wrench
60-8001 Gun Wrench
98-0113 Gun Cleaning Brush
Air Caps and Needles shown on Page 1