

# 8450FM/8455FM Soft-Close, Sidemount Drawer Slides Force Management™ Technology

## 8450FM/8455FM Enhancements

Collector increases closure performance

Optional rear mounting hole increases mounting options

Additional structural ribbing increases durability



Rear Mounting Hole

Reinforcement Ribbing

Center Member Collector

# Force Management™ Technology

The next generation of Soft-Close from Knap & Vogt®



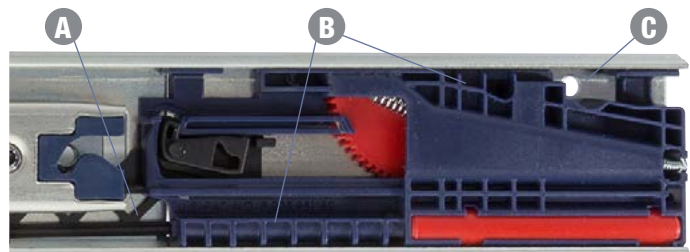
## Force Management™ Technology

Force Management™ (FM) from Knap & Vogt® is the next generation of soft-close drawer slide technology. It establishes a new standard in soft-close functionality by delivering superior performance in dampening action, effortless drawer opening and smooth operation.

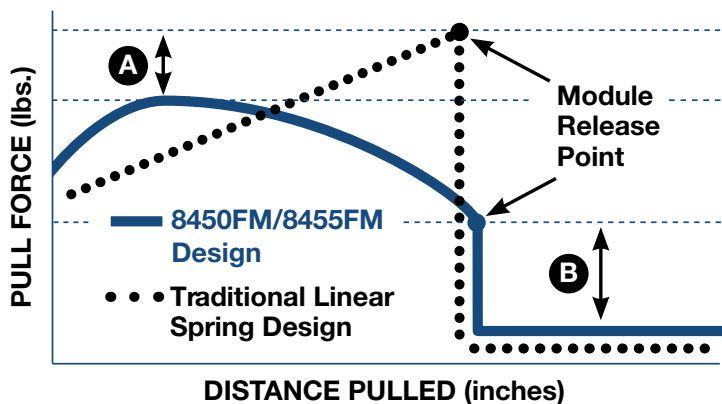
The 8450FM/8455FM slides, built on the time-tested KV 8400 slide platform, include a patent-pending Force Management™ module that utilizes an innovative rack and gear system. This system places mechanical forces where they are needed to significantly reduce the effort to open a drawer and deliver a smooth and easy drawer closure.

## Enhancements

8450FM is an innovative Center Member Collector with Spring Cushion (A). This innovative feature improves closure performance by forcing the drawer member to close before the Soft-Close feature is engaged, reducing friction and noise. Structural Reinforcement Ribbing (B) has also been added to the module to improve overall module strength. A Rear Mounting Hole (C) has been added for an additional level of installation support.



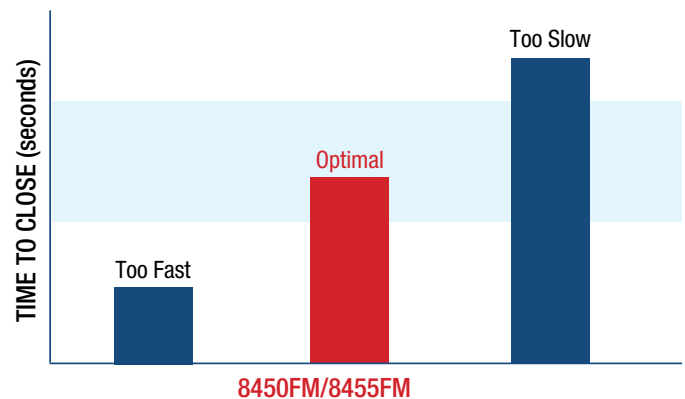
## Soft-Close Module Force Curve



A A lower peak pull force - makes the 8450FM/8455FM soft-close slides easy to open.

B The 8450FM/8455FM soft-close slides have a significantly less drop off force at the module release point - giving a smoother opening performance than traditional linear spring designs.

## Soft-Close Dampening Effect



- 8450FM/8455FM soft-close slides close at optimal speed due to the perfect balance of the dampening and spring forces.
- Slides that close too fast have little to no dampening effect.
- Slides that close too slow have poor closure performance.



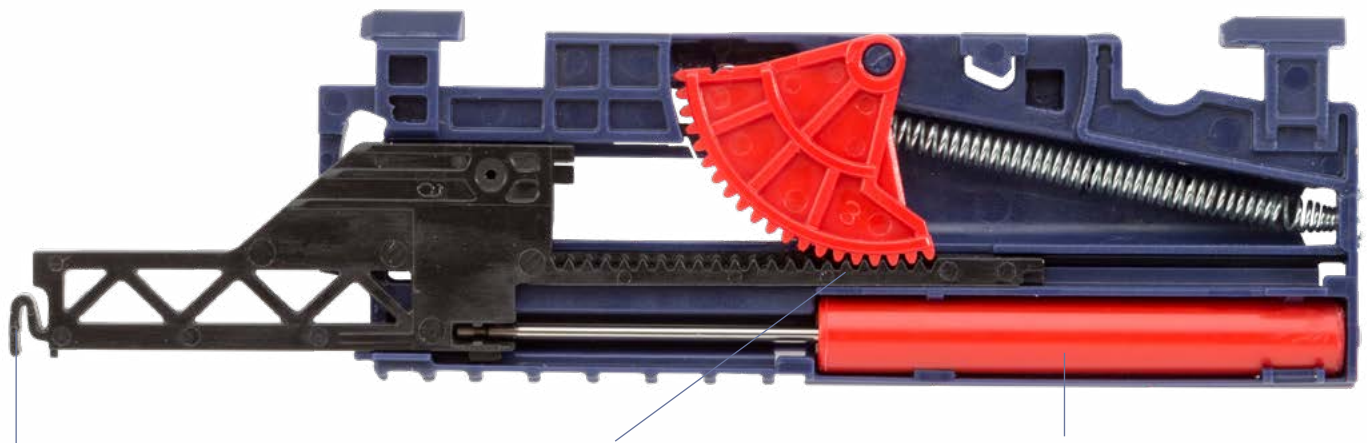
# 8450FM/8455FM

## Soft-Close, Sidemount Drawer Slides



### Features & Benefits

- Innovative Soft-Close Module with Force Management™ Technology
- 1/2" side clearance, no set-up change from KV 8400 or KV 8450
- **8450FM:** Full-extension 100-pound class rated (in 12" to 28" lengths)
- **8455FM:** 1" Overtravel 90-pound class rated (in 16" to 28" lengths)
- Non-handed slide design allows for easy, flexible installation
- Push-in lever disconnect allows for easy drawer removal
- Traditional and 32mm hole patterns allow for easy, flexible installation on framed and frameless cabinetry
- Three ball bearings per inch and polymer stop cushions aid with smooth, quiet operation of the slide
- Ball retainer latch and ramps allow for easy drawer insertion
- 40 stocked SKU's available: Offered in bulk/poly packs and Anochrome/Ebony Black finishes
- Backed by the exclusive Knap & Vogt Limited Lifetime Warranty



#### Center Member Collector

The Center Member Collector forces the drawer member to close before the soft-close module is engaged, reducing friction and increasing closure performance. It also includes an Integrated Spring Cushion which helps reduce the "thunk" when closing the drawer.

#### Rack & Gear System

The rack and gear system is the center of the Force Management™ module design and is superior to common linear spring designs. The system creates a mechanical advantage that puts higher forces at the closure point and less forces at the point of module release. The result is better closing performance and a smoother opening.

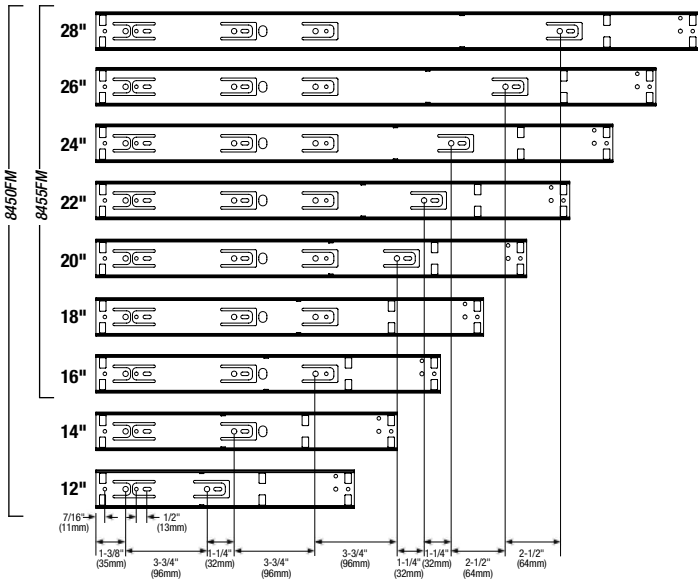
#### Hydraulic Dampener

The 1.5" (38mm) hydraulic dampener is one of the longest in the industry. When paired with a matched spring design, it slows the drawer closure to avoid bouncing and slamming. The spring tension ensures a complete and secure closure every time.

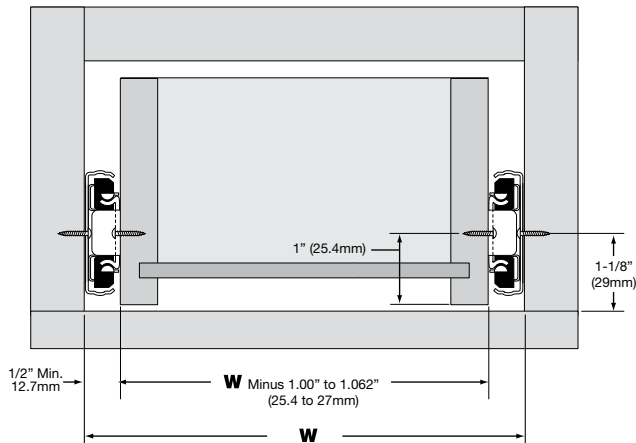
# 8450FM/8455FM

## Technical Information

### Cabinet Member Dimensions

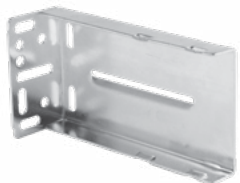


### Installation



**NOTE:** 8450FM/8455FM track members are not interchangeable with previous versions of 8450/8455.

### Accessories



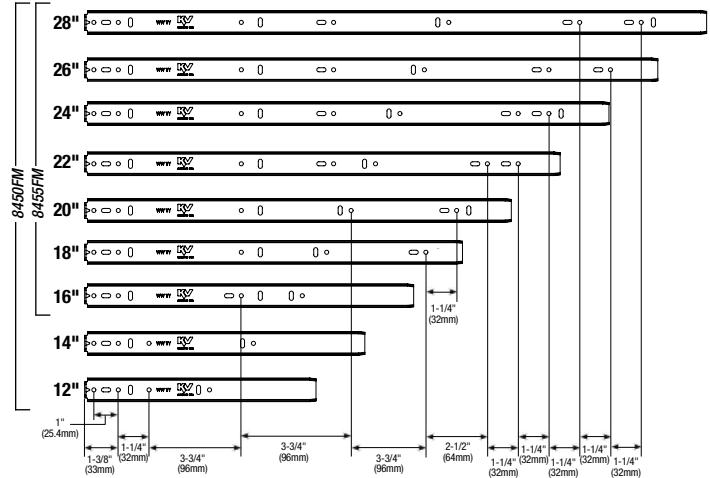
8403 Rear Mounting Bracket



8404 Front Face Frame Bracket

Like all KV drawer slides, 8450FM/8455FM Drawer Slides are designed to meet or exceed ANSI performance standards as established by KCMA, BHMA and BIFMA and are backed by a Limited Lifetime Warranty. Knape & Vogt reserves the right to change product specifications at any time without notice and without incurring responsibility for existing units.

### Drawer Member Dimensions



### Specifications

- Models**  
**8450FM** Full Extension Soft-Close Drawer Slide  
**8455FM** 1" Overtravel Soft-Close Drawer Slide
- Mounting** Side mounting for frame and frameless construction
- Clearance** 1/2" plus 1/32" minus 0" each side
- Max. Width** 24" drawer
- Load Rating** **8450FM:** 100-pound class  
**8455FM:** 90-pound class
- Height** 1-13/16"
- Finishes** Anochrome (ANO), Ebony Black (EB)
- Action** Telescopic movement on precise steel ball bearings
- Additional Features**
  - Soft-Close module with Force Management™ technology
  - 32mm hole pattern with direct access mounting and adjustment
  - Center Member Collector increases closure performance
  - Lever disconnect for easy drawer removal
  - Ball retainer latch and ramps for easy drawer insertion
  - Drawer adjustment without removal
  - Metal ball retainer holds three bearings per inch of race for smooth and quiet motion
  - Polymer stop cushions, non-handed design
- Sizes** **8450FM:** 12", 14", 16", 18", 20", 22", 24", 26", 28"  
**8455FM:** 16", 18", 20", 22", 24", 26", 28"
- Packaged** **Bulk pack (8450FMB/8455FMB):** 10 sets per carton, no screws one instruction sheet  
**Poly pack (8450FMP/8455FMP):** One set per poly bag with screws and instruction sheet. 10 sets per carton.
- Accessories** **8403 Rear Mounting Bracket (Zinc):** Non-handed snap-on design; 2-3/4" maximum adjustment  
**8404 Front Face Frame Bracket (Black or Zinc):** Non-handed snap-on design; fits all KV 8400 series products
- Applications** Designed for applications in the 100-pound/90-pound class with drawer box widths up to 24". Consult KV for verification testing service of your specific application.

