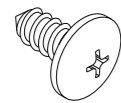


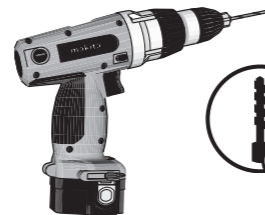
## 5730/5786 SERIES PULLOUT BASKET WITH SOFT-CLOSE

# Side Mounting Template (Left)

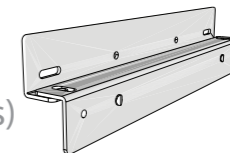
- Place template at the front edge of your cabinet opening at desired height
- Use reverse side of template for other side wall and repeat



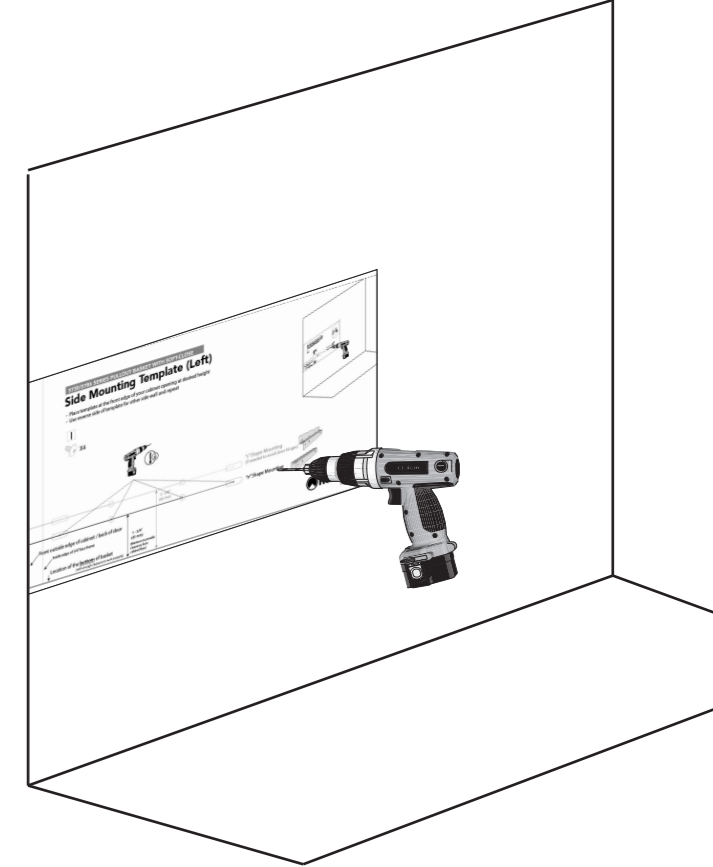
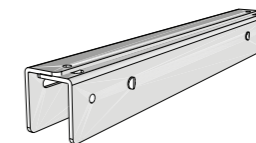
X4



"s" Shape Mounting  
(if needed to avoid door hinges)



"n" Shape Mounting



Front outside edge of cabinet / back of door

Inside edge of 3/4" face frame

Location of the **bottom** of basket

(with enough clearance to work properly)

1 - 3/4"  
(45 mm)

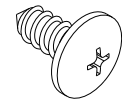
(Minimum to provide  
clearance from  
cabinet floor)

2 - 3/8"  
(60 mm)

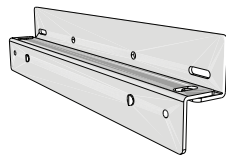
## 5730/5786 SERIES PULLOUT BASKET WITH SOFT-CLOSE

# Side Mounting Template (Right)

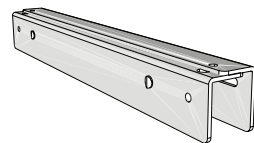
- Place template at the front edge of your cabinet opening at desired height
- Use reverse side of template for other side wall and repeat



X4



"s" Shape Mounting  
(if needed to avoid door hinges)



"n" Shape Mounting

