

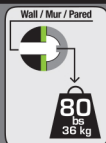
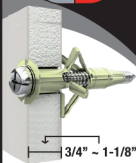
HW-20

6 x 3/16" L

Hollow wall anchor

Ancrage pour mur creux

Anclaje para pared hueca



Ø 3/8"



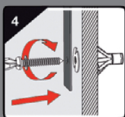
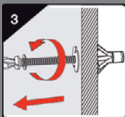
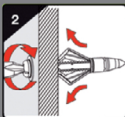
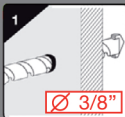
Loads* / Charge* / Carga*

Drywall Gypse Tablaroca 1/2"		
Safe load Poids sécuritaire Carga segura	80 lbs 36 kg	
Break point Poids de bris Ruptura de peso	169 lbs 76 kg	100 lbs 45 kg



Indoor use only
Usage intérieur uniquement
Interiores uso

Hollow Wall Mur Creux Pared Hueca	drywall gypse tablaroca		
	tile céramique cerámica		
	plaster plâtre yeso		



IMPORTANT / IMPORTANTE

Values obtained in optimal conditions. For drywall, allow an additional safety factor in situations of moisture or vibration.

Valeurs obtenues en conditions optimales. Pour le gypse, allouer un facteur de sécurité additionnel dans des situations d'humidité ou de vibration.

Valores obtenidos en condiciones óptimas. Para el yeso, asignar un factor de seguridad adicional en situaciones de humedad o vibración.