

### 7.1.2) Damaged coupling

The coupling is damaged if:

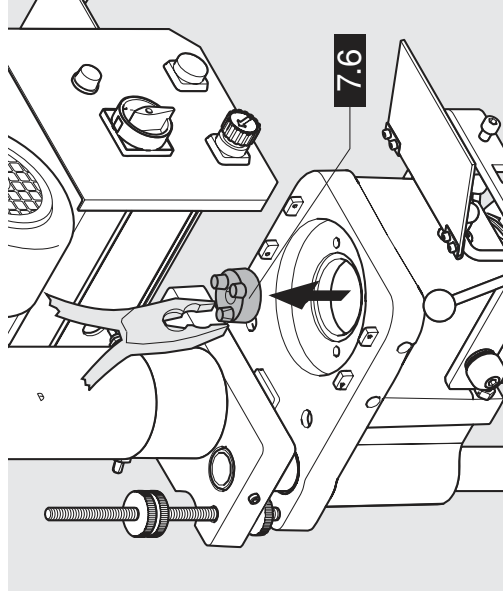
- The drill is jammed in the work piece but the motor fan wheel continues **(2.9)** to turn.

#### **ATTENTION:**

**Keep your hands and other objects away from machine work area (A)**



- Set main switch to **pos. 0**
- Disconnect electrical and pneumatic connections to the assembly machine
- Remove drill
- Remove motor hood
- Loosen the motor's four side fixing screws **(7.4)** (approx. 4 full turns)
- Lift up motor and place on to the drive

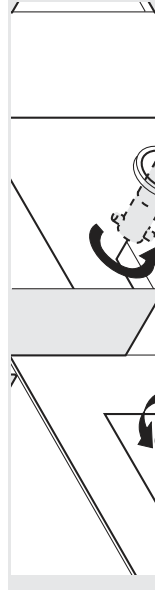


#### **ATTENTION:**

**Secure the motor against falling**



- Remove dampening ring **(7.5)**
- Remove old coupling **(7.6)**
- Attach replacement coupling **(7.6)** on to the spindle. (ensure correct positioning of coupling and spindle)
- Insert dampening ring **(7.5)**
- Preposition coupling base for motor attachment
- Attach motor (motor must sit securely on the flange)
- Re-secure the motor's four side fixing screws **(7.4)**
- Re-attach motor hood



### 7.1.3) Replacing the operational status indicator