

2001 Sliding Door Lock (#2001SDL)

Various backsets to meet your requirements

2 3/4" Backset

Operation*:

- 2001 SDL-1 By Key Outside Only
- 2001 SDL-2 By Key Outside and Inside
- 2001 SDL-3 By Key Outside, Thumb turn Inside
- 2001 SDL-4 By Thumb turn Inside Only
- 2001 SDL-5 By Thumb turn Inside, Emergency key Outside

** Numbers are for specification and door preparation purposes. The lock itself is the same for all operations.*



CASE:

Heavy Gauge, Wrought
(11/16" thick)

DEAD BOLT:

1/2" thick, 1 7/32" high, 1" Throw

THUMB TURN HUB:

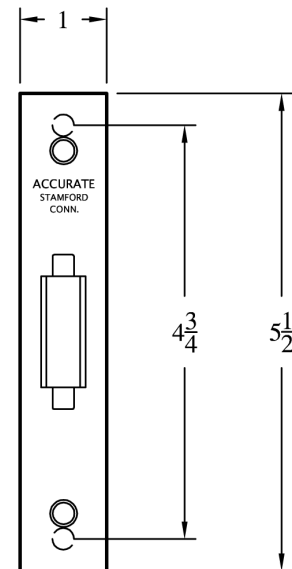
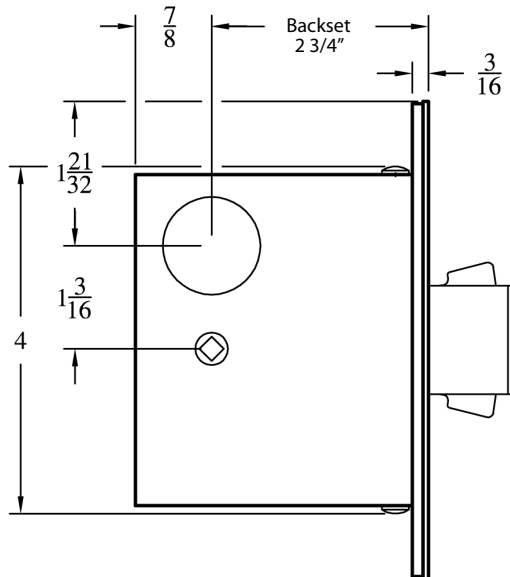
3/16" (5mm) on the diamond

ARMOR FRONT:

Brass

CYLINDER:

Available to order (3/4" length)



SUGGESTED TRIM:	SDL-1	SDL-2	SDL-3	SDL-4	SDL-5
Inside	<i>Optional</i> A2002B, S2002B	A2002C, S2002C	A2002T, S2002T	A2002T, S2002T	A2002T, S2002T
Outside	A2002C, S2002C	A2002C, S2002C	A2002C, S2002C	<i>Optional</i> A2002B, S2002B	A2002E, S2002E